


DYNALITE PRO SERIES FRONT HUB KITS


KIT FEATURES


Complete systems including forged aluminum hubs for use on conventional snout non-ABS front spindles and struts

Easy upgrade from OE brakes on many popular applications

Fits inside most OE and aftermarket disc brake offset 15" wheels

 Calipers available in black

 Calipers available in red

 Calipers available polished



Dynalite Pro Series
Front Hub Kit
with SRP Rotor

KIT COMPONENTS

FORGED BILLET DYNALITE 4 PISTON CALIPERS

FDL calipers are the newest and strongest in their class. Stress-flow forged billet bodies, and a radial transition design are key elements contributing to the superior strength and efficiency of the FDL. This innovative caliper incorporates four stainless steel pistons for high clamping force without deflection. Stainless is used to resist corrosion and reduce heat transfer from the pads. Square faced o-rings provide long service and positive piston retraction on release. FDL calipers feature Wilwood's SRS stainless steel bridge plates to eliminate the bridge wear caused by pad gouging and extend the service life of the caliper. The spring-loaded action of the SRS plates also eliminates pad rattle and dampens the vibration harmonics that can contribute to pad squeal. The 1/8" NPT fluid inlet is easily adapted to all types of flexlines. Internal fluid passages evenly distribute pressure to both sides of the caliper. Four corner bleed screws assure simple and effective bleeding regardless of caliper location. The top loaded brake pads can be easily inspected and serviced without caliper removal. FDL calipers come in a choice of red, black, or for show cars, fully polished to catch the eye of the most discriminating enthusiast.

FORGED BILLET ALUMINUM HUBS

Forged aluminum hubs are unmatched for strength and weight savings. Premium grade billets are forged into shape under high heat and pressure then CNC machined for precise fit on each spindle application. Each hub is multi-drilled for 5 on 4.50" and 5 on 4.75" wheel lug patterns, unless noted. Aluminum backside mounting plates are supplied for solid rotor mounting directly to the hub. The hubs are shipped complete with races installed, new bearings, grease seals, screw-on billet aluminum hub caps, and 1/2-20 X 1.75" RH grade 8 wheel lug studs.

VENTED IRON ROTORS

All Wilwood rotors are manufactured from premium grade, long grain carbon iron to provide long wear with high thermal stability and resistance to distortion. The superior heat absorption and dissipation qualities of a vented iron rotor are essential to preventing heat fade and realizing the longest service life from the components. All kits include either .81" thick x 10.75", 11.00" or 11.75" diameter rotors.

SRP ROTORS

For custom, show, and sport performance applications, SRP drilled rotor kits offer the enhanced look and performance of a specially engineered cross-drill and face

slot pattern. The venting and cleaning action of the holes and slots will reduce pad glaze, dissipate surface heat, and minimize irregular friction compound build-up on the rotor faces. The results are smoother engagement with an overall improvement in consistency and response from the pads. Finally, each SRP rotor is silver zinc washed to prevent rust on the areas of the rotor not kept clean by pad contact.

HP ROTORS

HP rotor kits include precision machined smooth face rotors. The additional mass of the non-drilled HP rotor adds service life and improves pad cooling on competition or other vehicles subject to sustained high operating temperatures.

WILWOOD BRAKE PADS

Wilwood brake pads are a low dust, low noise improved friction formula. These pads provide fast response, high resistance to fade, long wear, and the low rotor abrasion that Wilwood is so well known for. Specific information on Wilwood Smart Pad, PolyMatrix and ProMatrix brake pad compounds can be found on pages 58-60.

CALIPER BRACKETS AND HARDWARE

Aluminum mount brackets with steel threaded bolt hole inserts are lightweight and strong. Each bracket is CNC machined for precise fit on each specific spindle. Grade 8 or higher and AN style nuts, bolts, washers and alignment shims are included in all applicable kits.

PLUMBING

Fittings and flexlines to install these brake systems must be ordered separately. An assortment of fittings and premium stainless steel flexline kits can be found on pages 55-57.

NOTE Installation of Wilwood Disc Brake Kits may affect the wheel offset. Reference Wilwood wheel clearance diagrams available on our web site.

ORDERING INFORMATION: KITS

MAKE	YEAR	OE SPINDLE TYPE	NOTES	KIT PART NUMBERS			
				BLACK CALIPER HP ROTOR	BLACK CALIPER SRP ROTOR	POLISHED CALIPER HP ROTOR	POLISHED CALIPER SRP ROTOR
Buick							
Apollo	1973-74	Disc/Drum		140-2285-B	140-2285-BD	140-2285-P	140-2285-DP
Apollo	1975	Disc Brk Spndl Only	(4)	140-3445-B	140-3445-BD	140-3445-P	140-3445-DP
Buick, rwd w/11" OE Rotor	1979-85	Disc Brk Spndl Only	(3)	140-8174-B	140-8174-BD	—	—
Buick, GN, Late	1979-87	Disc	(4) (8)	140-2508-B	140-2508-BD	140-2508-P	140-2508-DP
Century	1973-77	Disc Brk Spndl Only	(4)	140-3445-B	140-3445-BD	140-3445-P	140-3445-DP
Century, Late	1979-81	Disc	(4) (8)	140-2508-B	140-2508-BD	140-2508-P	140-2508-DP
Regal	1973-77	Disc Brk Spndl Only	(4)	140-3445-B	140-3445-BD	140-3445-P	140-3445-DP
Regal, Late	1979-87	Disc	(4) (8)	140-2508-B	140-2508-BD	140-2508-P	140-2508-DP
Skylark	1975-78	Disc Brk Spndl Only	(4)	140-3445-B	140-3445-BD	140-3445-P	140-3445-DP
Skylark	1979	Disc Brk Spndl Only	(4)	140-8174-B	140-8174-BD	—	—
Special	1967-72	Disc		140-2285-B	140-2285-BD	140-2285-P	140-2285-DP
Special	1973-74	Disc	(4)	140-3445-B	140-3445-BD	140-3445-P	140-3445-DP
Chevrolet							
Belair	1955-57	Drum	(6) (13)	140-3425-B	140-3425-BD	140-3425-P	140-3425-DP
Belair / Biscayne	1959-64	Drum	(6)(7)(13)	140-5329-B	140-5329-BD	140-5329-P	140-5329-DP
Blazer, 4 x 2 100.5" Wheel Base	1983-90	Disc	(4)	140-2508-B	140-2508-BD	140-2508-P	140-2508-DP
Camaro	1967-69	Disc/Drum		140-2285-B	140-2285-BD	140-2285-P	140-2285-DP
Camaro	1982-87	Disc	(4)	140-2992-B	140-2992-BD	140-2992-P	140-2992-DP
Camaro	1970-78	Disc Brk Spndl Only	(4)	140-3445-B	140-3445-BD	140-3445-P	140-3445-DP
Camaro	1979-81	Disc Brk Spndl Only	(4)	140-8174-B	140-8174-BD	—	—
Camaro Single Piston Caliper Only	1982-92	Disc Brk Spndl Only	(4)	140-2992-B	140-2992-BD	140-2992-P	140-2992-DP
Caprice	1977-78	Disc Brk Spndl Only	(4)	140-3445-B	140-3445-BD	140-3445-P	140-3445-DP
Chevelle	1967-72	Disc/Drum		140-2285-B	140-2285-BD	140-2285-P	140-2285-DP
Chevelle	1973-77	Disc Brk Spndl Only	(4)	140-3445-B	140-3445-BD	140-3445-P	140-3445-DP
Chevelle, Modified	1964-66	Drum	(1)	140-2285-B	140-2285-BD	140-2285-P	140-2285-DP
Chevrolet, Full Size	1977-78	Disc Brk Spndl Only	(4)	140-3445-B	140-3445-BD	140-3445-P	140-3445-DP
Chevrolet, Passenger w/11" OE Rotor	1979-90	Disc Brk Spndl Only	(3) (4)	140-8174-B	140-8174-BD	—	—
Chevy II / Nova	1967-74	Disc/Drum		140-2285-B	140-2285-BD	140-2285-P	140-2285-DP
Chevy S10	1982-90	Disc	(4)	140-2508-B	140-2508-BD	140-2508-P	140-2508-DP
Chevy II, Modified	1964-66	Drum	(1)	140-2285-B	140-2285-BD	140-2285-P	140-2285-DP
Corvette	1963-64	Drum	(6)(7)(13)	140-5329-B	140-5329-BD	140-5329-P	140-5329-DP
El Camino	1967-72	Disc/Drum		140-2285-B	140-2285-BD	140-2285-P	140-2285-DP
El Camino	1973-77	Disc Brk Spndl Only	(4)	140-3445-B	140-3445-BD	140-3445-P	140-3445-DP
El Camino, Modified	1964-66	Drum	(1)	140-2285-B	140-2285-BD	140-2285-P	140-2285-DP
El Camino, Late	1979-87	Disc	(4) (8)	140-2508-B	140-2508-BD	140-2508-P	140-2508-DP
Impala	1959-64	Drum	(6)(7)(13)	140-5329-B	140-5329-BD	140-5329-P	140-5329-DP
Impala, w/11" OE Rotor	1977-78	Disc Brk Spndl Only	(3) (4)	140-3445-B	140-3445-BD	140-3445-P	140-3445-DP
Malibu	1973-77	Disc Brk Spndl Only	(4)	140-3445-B	140-3445-BD	140-3445-P	140-3445-DP
Malibu, Late	1979-87	Disc	(4) (8)	140-2508-B	140-2508-BD	140-2508-P	140-2508-DP
Monte Carlo	1970-72	Disc/Drum		140-2285-B	140-2285-BD	140-2285-P	140-2285-DP
Monte Carlo	1973-77	Disc Brk Spndl Only	(8)	140-3445-B	140-3445-BD	140-3445-P	140-3445-DP
Monte Carlo, Late	1979-88	Disc	(4) (8)	140-2508-B	140-2508-BD	140-2508-P	140-2508-DP
Nova	1975-78	Disc Brk Spndl Only	(4)	140-3445-B	140-3445-BD	140-3445-P	140-3445-DP
Nova	1979	Disc Brk Spndl Only	(3) (4)	140-8174-B	140-8174-BD	—	—
Chrysler / Dodge							
Aspen	1976-80	Disc	(15)	140-2729-B	140-2729-BD	140-2729-P	140-2729-DP
Challenger	1970-72	Drum	(15)	140-2721-B	140-2721-BD	140-2721-P	140-2721-DP

GROUP 88

DISCLAIMER

Wilwood engineers brake kits and components for a wide variety of racing and high performance driving applications. It is the responsibility of the end user to choose the parts that are best suited for the braking demands encountered by his

or her vehicle. Vehicle speed and weight, along with environmental conditions should always be taken into account when selecting and installing the kit or component that's right for you. See page 9 for complete disclaimer of warranty.

DYNALITE PRO SERIES FRONT HUB KITS

ORDERING INFORMATION: KITS (Cont.)

MAKE	YEAR	OE SPINDLE TYPE	NOTES	KIT PART NUMBERS			
				BLACK CALIPER HP ROTOR	BLACK CALIPER SRP ROTOR	POLISHED CALIPER HP ROTOR	POLISHED CALIPER SRP ROTOR
Chrysler / Dodge (Cont.)							
Challenger	1970-72	Disc	(15)	140-2726-B	140-2726-BD	140-2726-P	140-2726-DP
Challenger	1973-74	Disc	(9) (15)	140-2729-B	140-2729-BD	140-2729-P	140-2729-DP
Charger	1966-72	Drum	(15)	140-2721-B	140-2721-BD	140-2721-P	140-2721-DP
Charger	1970-72	Disc	(15)	140-2726-B	140-2726-BD	140-2726-P	140-2726-DP
Charger	1973-78	Disc	(15)	140-2729-B	140-2729-BD	140-2729-P	140-2729-DP
Chrysler F-Body Passenger	1979-88	Disc	(15)	140-2729-B	140-2729-BD	140-2729-P	140-2729-DP
Cordoba	1975-83	Disc	(15)	140-2729-B	140-2729-BD	140-2729-P	140-2729-DP
Coronet	1965-72	Drum	(15)	140-2721-B	140-2721-BD	140-2721-P	140-2721-DP
Coronet	1970-72	Disc	(15)	140-2726-B	140-2726-BD	140-2726-P	140-2726-DP
Coronet	1973-76	Disc	(15)	140-2729-B	140-2729-BD	140-2729-P	140-2729-DP
Dart	1963-72	9" Drum	(15)	140-2722-B	140-2722-BD	140-2722-P	140-2722-DP
Dart	1965-72	10" Drum	(15)	140-2723-B	140-2723-BD	140-2723-P	140-2723-DP
Dart	1973-74	Disc	(9) (15)	140-2729-B	140-2729-BD	140-2729-P	140-2729-DP
Diplomat	1977-88	Disc	(15)	140-2729-B	140-2729-BD	140-2729-P	140-2729-DP
Dodge Pass	1962-64	Drum	(15)	140-2721-B	140-2721-BD	140-2721-P	140-2721-DP
except 880 series							
Dodge F-Body Passenger	1973-81	Disc	(15)	140-2729-B	140-2729-BD	140-2729-P	140-2729-DP
Imperial	1981-83	Disc	(15)	140-2729-B	140-2729-BD	140-2729-P	140-2729-DP
Lancer	1961-62	9" Drum	(15)	140-2722-B	140-2722-BD	140-2722-P	140-2722-DP
LeBaron	1977-81	Disc	(15)	140-2729-B	140-2729-BD	140-2729-P	140-2729-DP
Magnum	1978-79	Disc	(15)	140-2729-B	140-2729-BD	140-2729-P	140-2729-DP
Mirada	1980-83	Disc	(15)	140-2729-B	140-2729-BD	140-2729-P	140-2729-DP
R/T	1967-70	Drum	(15)	140-2721-B	140-2721-BD	140-2721-P	140-2721-DP
R/T	1970	Disc	(15)	140-2726-B	140-2726-BD	140-2726-P	140-2726-DP
Ford							
Early Ford Pass Car Spindle	1937-48	Drum	(11)	140-5883-B	140-5883-BD	140-5883-P	140-5883-DP
Early Ford Pass Car Spindle	1937-48	Drum		140-2260-B	140-2260-BD	140-2260-P	140-2260-DP
Fairlane	1966-69	Disc/Drum	(5)	140-4304-B	140-4304-BD	140-4304-P	140-4304-DP
Fairlane	1970-71	Disc/Drum		140-9054	140-9054-D	—	—
Falcon	1965-69	Disc/Drum	(5)	140-4304-B	140-4304-BD	140-4304-P	140-4304-DP
Falcon	1970-71	Disc/Drum		140-9054	140-9054-D	—	—
Maverick	1970-73	Disc/Drum		140-9054	140-9054-D	—	—
Mustang V8 Spindle	1965-69	Disc/Drum	(5)	140-4304-B	140-4304-BD	140-4304-P	140-4304-DP
Mustang Shelby, GT350, GT500	1970	Disc	(5)	140-4304-B	140-4304-BD	140-4304-P	140-4304-DP
Mustang II	1974-78	Disc		140-2129-B	140-2129-BD	140-2129-P	140-2129-DP
Mustang	1970-73	Disc/Drum		140-9054	140-9054-D	—	—
Mustang II - 11" Rotor Kit	1974-78	Disc	(12) (14)	140-8652-B	140-8652-BD	140-8652-P	140-8652-DP
Mustang, 5 Lug	1987-93	Disc		140-7589	140-7589-D	—	—
Pinto	1971-80	Disc/Drum		140-2129-B	140-2129-BD	140-2129-P	140-2129-DP
Pinto - 11" Rotor Kit	1971-80	Disc/Drum	(12) (14)	140-8652-B	140-8652-BD	140-8652-P	140-8652-DP
Ranchero	1967-69	Disc/Drum	(5)	140-4304-B	140-4304-BD	140-4304-P	140-4304-DP
GMC							
GMC Sprint	1971-72	Disc/Drum		140-2285-B	140-2285-BD	140-2285-P	140-2285-DP
GMC Sprint	1979-87	Disc	(4)	140-2508-B	140-2508-BD	140-2508-P	140-2508-DP
GMC Sprint	1973-77	Disc Brk Spndl Only	(4)	140-3445-B	140-3445-BD	140-3445-P	140-3445-DP
Jimmy, 4 x 2 - 100.5" W.B.	1983-90	Disc	(4)	140-2508-B	140-2508-BD	140-2508-P	140-2508-DP
S15, 4 x 2	1982-90	Disc	(4)	140-2508-B	140-2508-BD	140-2508-P	140-2508-DP

ORDERING INFORMATION: KITS (Cont.)

MAKE	YEAR	OE SPINDLE TYPE	NOTES	KIT PART NUMBERS			
				BLACK CALIPER HP ROTOR	BLACK CALIPER SRP ROTOR	POLISHED CALIPER HP ROTOR	POLISHED CALIP SRP ROTOR
Mercury							
Bobcat	1975-80	Disc		140-2129-B	140-2129-BD	140-2129-P	140-2129-DP
Bobcat - 11" Rotor Kit	1975-80	Disc	(12) (14)	140-8652-B	140-8652-BD	140-8652-P	140-8652-DP
Comet	1965-69	Disc/Drum	(5)	140-4304-B	140-4304-BD	140-4304-P	140-4304-DP
Comet	1970-73	Disc/Drum		140-9054	140-9054-D	—	—
Cougar	1967-69	Disc/Drum	(5)	140-4304-B	140-4304-BD	140-4304-P	140-4304-DP
Cougar	1970-73	Disc/Drum		140-9054	140-9054-D	—	—
Montego	1970-71	Disc/Drum		140-9054	140-9054-D	—	—
Oldsmobile							
Cutlass	1973-77	Disc Brk Spndl Only	(4)	140-3445-B	140-3445-BD	140-3445-P	140-3445-DP
Cutlass, Late	1979-88		(4) (8)	140-2508-B	140-2508-BD	140-2508-P	140-2508-DP
Rear Wheel Drive							
F-85	1967-72	Disc		140-2285-B	140-2285-BD	140-2285-P	140-2285-DP
F-85	1970-72	Drum	(10)	140-2285-B	140-2285-BD	140-2285-P	140-2285-DP
F-85	1973-77	Disc	(4)	140-3445-B	140-3445-BD	140-3445-P	140-3445-DP
Oldsmobile w/11" OE Rotor	1977-78	Disc Brk Spndl Only	(4)	140-3445-B	140-3445-BD	140-3445-P	140-3445-DP
Oldsmobile w/11" OE Rotor	1979-85	Disc Brk Spndl Only	(4)	140-8174-B	140-8174-BD	—	—
Omega	1973-74	Disc/Drum		140-2285-B	140-2285-BD	140-2285-P	140-2285-DP
Omega	1975-78	Disc Brk Spndl Only	(4)	140-3445-B	140-3445-BD	140-3445-P	140-3445-DP
Omega	1979	Disc Brk Spndl Only	(4)	140-8174-B	140-8174-BD	—	—
Plymouth							
Barracuda	1964-69	9" Drum	(15)	140-2722-B	140-2722-BD	140-2722-P	140-2722-DP
Barracuda	1965-69	10" Drum	(15)	140-2723-B	140-2723-BD	140-2723-P	140-2723-DP
Barracuda	1970-72	Drum	(15)	140-2721-B	140-2721-BD	140-2721-P	140-2721-DP
Barracuda	1970-72	Disc	(15)	140-2726-B	140-2726-BD	140-2726-P	140-2726-DP
Barracuda	1973-74	Disc	(9) (15)	140-2729-B	140-2729-BD	140-2729-P	140-2729-DP
Belvedere	1965-70	Drum	(15)	140-2721-B	140-2721-BD	140-2721-P	140-2721-DP
Belvedere	1970	Disc	(15)	140-2726-B	140-2726-BD	140-2726-P	140-2726-DP
Fury (except Gran)	1975-77	Disc	(15)	140-2729-B	140-2729-BD	140-2729-P	140-2729-DP
GTX	1967-71	Drum	(15)	140-2721-B	140-2721-BD	140-2721-P	140-2721-DP
GTX	1970-71	Disc	(15)	140-2726-B	140-2726-BD	140-2726-P	140-2726-DP
Plymouth	1962-64	Drum	(15)	140-2721-B	140-2721-BD	140-2721-P	140-2721-DP
Plymouth F-Body Passenger	1976-88	Disc	(15)	140-2729-B	140-2729-BD	140-2729-P	140-2729-DP
Road Runner	1968-72	Drum	(15)	140-2721-B	140-2721-BD	140-2721-P	140-2721-DP
Road Runner	1970-72	Disc	(15)	140-2726-B	140-2726-BD	140-2726-P	140-2726-DP
Satellite	1965-72	Drum	(15)	140-2721-B	140-2721-BD	140-2721-P	140-2721-DP
Satellite	1970-72	Disc	(15)	140-2726-B	140-2726-BD	140-2726-P	140-2726-DP
Satellite	1973-75	Disc	(15)	140-2729-B	140-2729-BD	140-2729-P	140-2729-DP
Superbee	1968-70	Drum	(15)	140-2721-B	140-2721-BD	140-2721-P	140-2721-DP
Superbee	1970	Disc	(15)	140-2726-B	140-2726-BD	140-2726-P	140-2726-DP
Valiant	1960-72	9" Drum	(15)	140-2722-B	140-2722-BD	140-2722-P	140-2722-DP
Valiant	1965-72	10" Drum	(15)	140-2723-B	140-2723-BD	140-2723-P	140-2723-DP
Valiant	1973-74	Disc	(9) (15)	140-2729-B	140-2729-BD	140-2729-P	140-2729-DP
Volare	1976-80	Disc	(15)	140-2729-B	140-2729-BD	140-2729-P	140-2729-DP
Pontiac							
Bonneville	1982-86	Disc	(4)	140-2508-B	140-2508-BD	140-2508-P	140-2508-DP
Firebird	1982-87	Disc	(4)	140-2992-B	140-2992-BD	140-2992-P	140-2992-DP
Firebird	1970-78	Disc Brk Spndl Only	(4)	140-3445-B	140-3445-BD	140-3445-P	140-3445-DP
Firebird	1979-81	Disc Brk Spndl Only	(4)	140-8174-B	140-8174-BD	—	—
Firebird	1982-92	Disc	(4)	140-2992-B	140-2992-BD	140-2992-P	140-2992-DP
Single Piston Caliper Only							

GROUP 88

DISCLAIMER

Wilwood engineers brake kits and components for a wide variety of racing and high performance driving applications. It is the responsibility of the end user to choose the parts that are best suited for the braking demands encountered by his

or her vehicle. Vehicle speed and weight, along with environmental conditions should always be taken into account when selecting and installing the kit or component that's right for you. See page 9 for complete disclaimer of warranty.

DYNALITE PRO SERIES FRONT HUB KITS

ORDERING INFORMATION: KITS (Cont.)

MAKE	YEAR	OE SPINDLE TYPE	NOTES	KIT PART NUMBERS			
				BLACK CALIPER HP ROTOR	BLACK CALIPER SRP ROTOR	POLISHED CALIPER HP ROTOR	POLISHED CALIPER SRP ROTOR
Pontiac (Cont.)							
Grand Prix	1973-77	Disc Brk Spndl Only	(4)	140-3445-B	140-3445-BD	140-3445-P	140-3445-DP
Grand Prix, Late	1979-87	Disc	(4) (8)	140-2508-B	140-2508-BD	140-2508-P	140-2508-DP
Lemans	1973-77	Disc	(4)	140-3445-B	140-3445-BD	140-3445-P	140-3445-DP
Lemans, Late	1979-81	Disc Brk Spndl Only	(4) (8)	140-2508-B	140-2508-BD	140-2508-P	140-2508-DP
Phoenix	1977-78	Disc Brk Spndl Only	(4)	140-3445-B	140-3445-BD	140-3445-P	140-3445-DP
Phoenix	1979	Disc Brk Spndl Only	(4)	140-8174-B	140-8174-BD	—	—
Pontiac Full Size	1977-78	Disc Brk Spndl Only	(3) (4)	140-3445-B	140-3445-BD	140-3445-P	140-3445-DP
w/11" OE Rotor							
Pontiac Full Size	1979-81	Disc Brk Spndl Only	(3) (4)	140-8174-B	140-8174-BD	—	—
w/11" OE Rotor							
Tempest	1973-77	Disc	(4)	140-3445-B	140-3445-BD	140-3445-P	140-3445-DP
Ventura II	1971-74	Disc/Drum		140-2285-B	140-2285-BD	140-2285-P	140-2285-DP
Ventura II	1975-77	Disc Brk Spndl Only	(4)	140-3445-B	140-3445-BD	140-3445-P	140-3445-DP

ORDERING INFORMATION: CUSTOM APPLICATION KITS

MAKE	SPINDLE TYPE	NOTES	KIT PART NUMBERS			
			BLACK CALIPER HP ROTOR	BLACK CALIPER SRP ROTOR	POLISHED CALIPER HP ROTOR	POLISHED CALIPER SRP ROTOR
Art Morrison						
Custom w/Dynalite Caliper	Strut		140-4258-B	140-4258-BD	140-4258-P	140-4258-DP
Chassis Engineering						
Custom w/Dynalite Caliper	Strut	(2)	140-4482-B	140-4482-BD	140-4482-P	140-4482-DP
Superior Spindle (Custom Applications)						
(2" Drop), 11.75" Rotor	Spindle	(2)	140-6713-B	140-6713-BD	140-6713-P	140-6713-DP

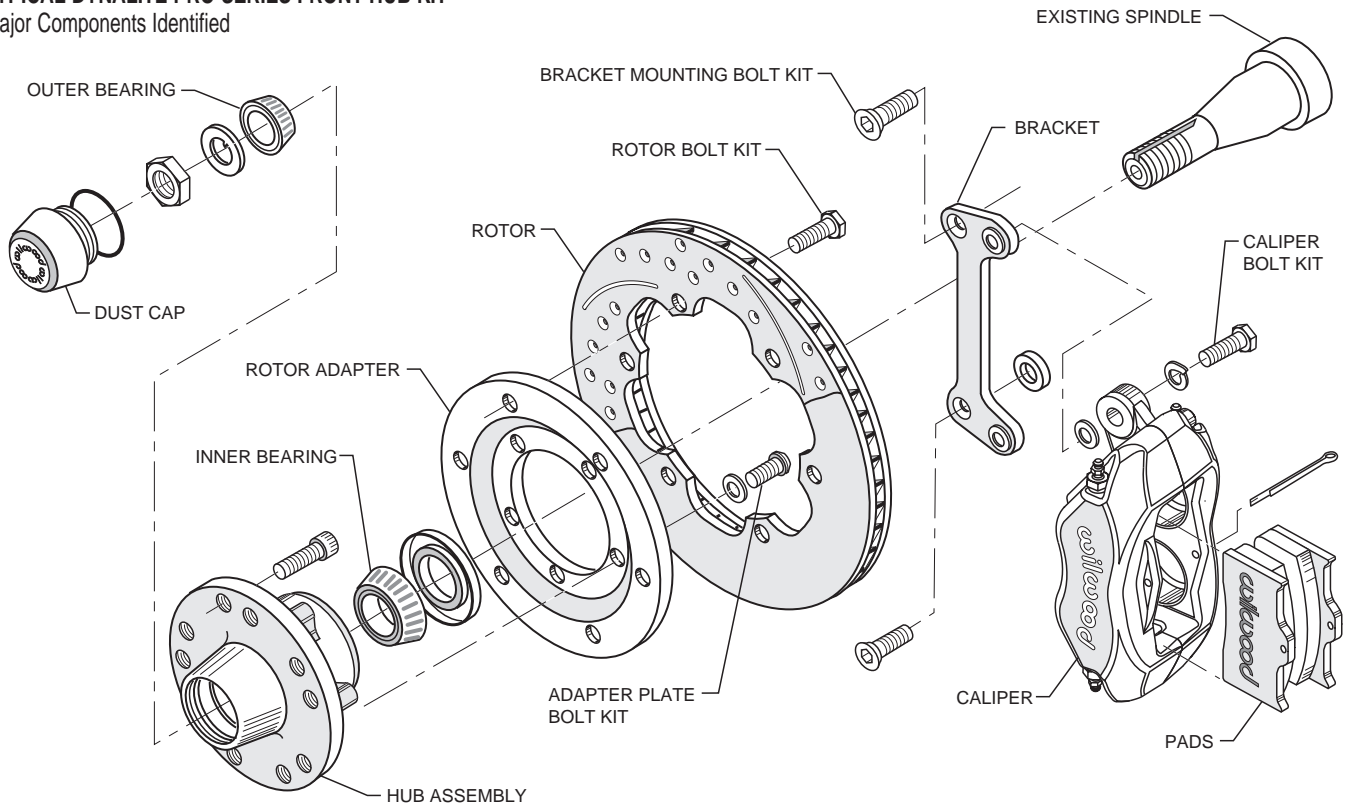
NOTES: (1) Mid 1965 & earlier models require spindle modifications	(9) Spindle must be modified
(2) Caliper brackets not included	(10) With O.A.I. drum spindle
(3) Disc spindles with 11" OE rotor only	(11) 360° Bracket
(4) Factory caliper mounting ears & backing plate bolt holes must be modified	(12) Kit contains 11.00" rotor
(5) Backing plate mount holes must be redrilled & tapped on disc brake spindles	(13) Kit contains 11.75" rotor
(6) Front track width becomes approx 1" wider per side. 15" disc brake offset wheels req'd	(14) Kit fits most aftermarket drop spindles
(7) Standard brakes only, no Z-11 or HD	(15) Hubs come drilled for 5 x 4.00" / 5 x 4.50" wheel lug patterns. However, the 5 x 4.00" pattern does not guarantee fitment with all 5 x 4.00" wheels, either OEM or aftermarket. Reference individual data sheets for wheel center hole clearance.
(8) Late spindle uses a torque nut to retain hub and bearing	

FOR USER SERVICEABLE COMPONENTS ORDERING INFORMATION, SEE PAGE 51

MAJOR BRAKE KIT COMPONENTS - GROUP 08

TYPICAL DYNALITE PRO SERIES FRONT HUB KIT

Major Components Identified

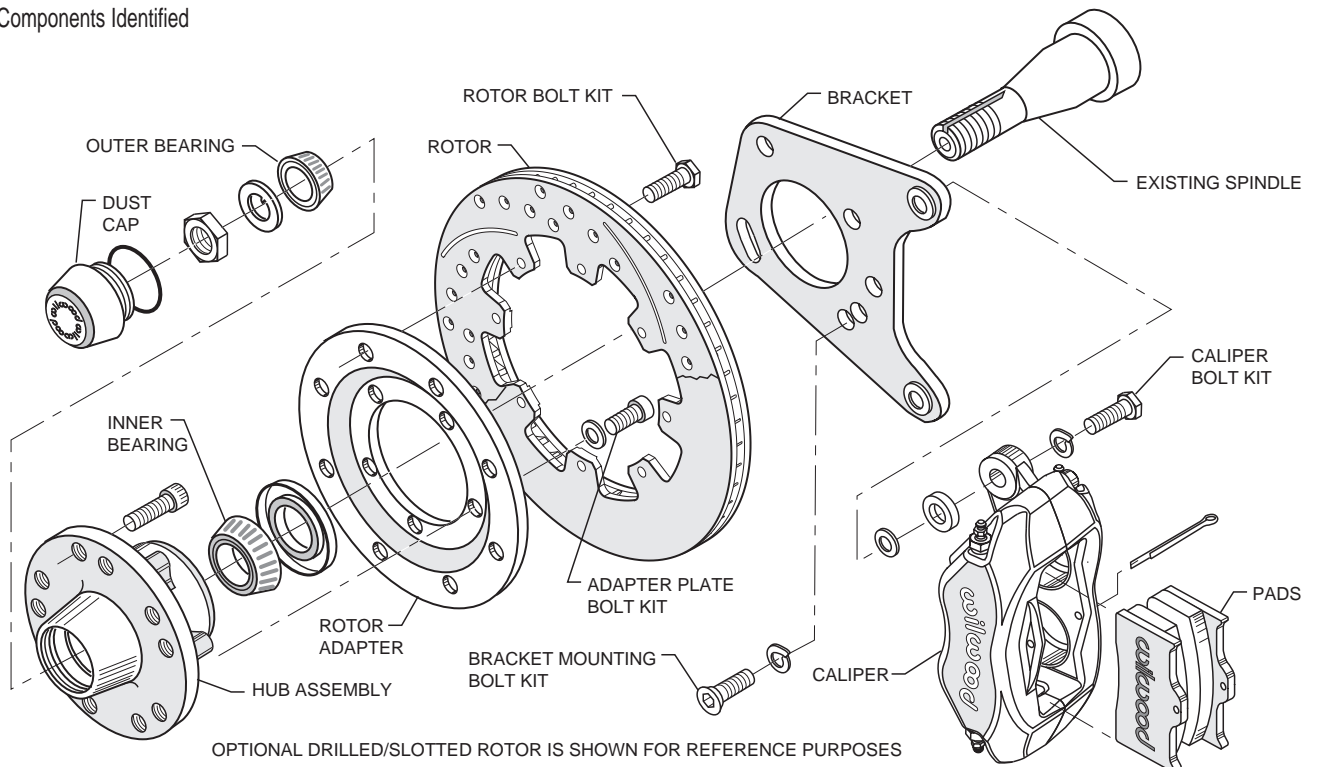


OPTIONAL DRILLED/SLOTTED ROTOR IS SHOWN FOR REFERENCE PURPOSES

MAJOR BRAKE KIT COMPONENTS - GROUP 06

TYPICAL DYNALITE BIG BRAKE FRONT HUB KIT

Major Components Identified



OPTIONAL DRILLED/SLOTTED ROTOR IS SHOWN FOR REFERENCE PURPOSES

DISCLAIMER

Wilwood engineers brake kits and components for a wide variety of racing and high performance driving applications. It is the responsibility of the end user to choose the parts that are best suited for the braking demands encountered by his

or her vehicle. Vehicle speed and weight, along with environmental conditions should always be taken into account when selecting and installing the kit or component that's right for you. See page 9 for complete disclaimer of warranty.

805-388-1188

wilwood 29

GROUP 08