



KART / JR. DRAGSTER CALIPER

www.wilwood.com

Caliper Highlights:

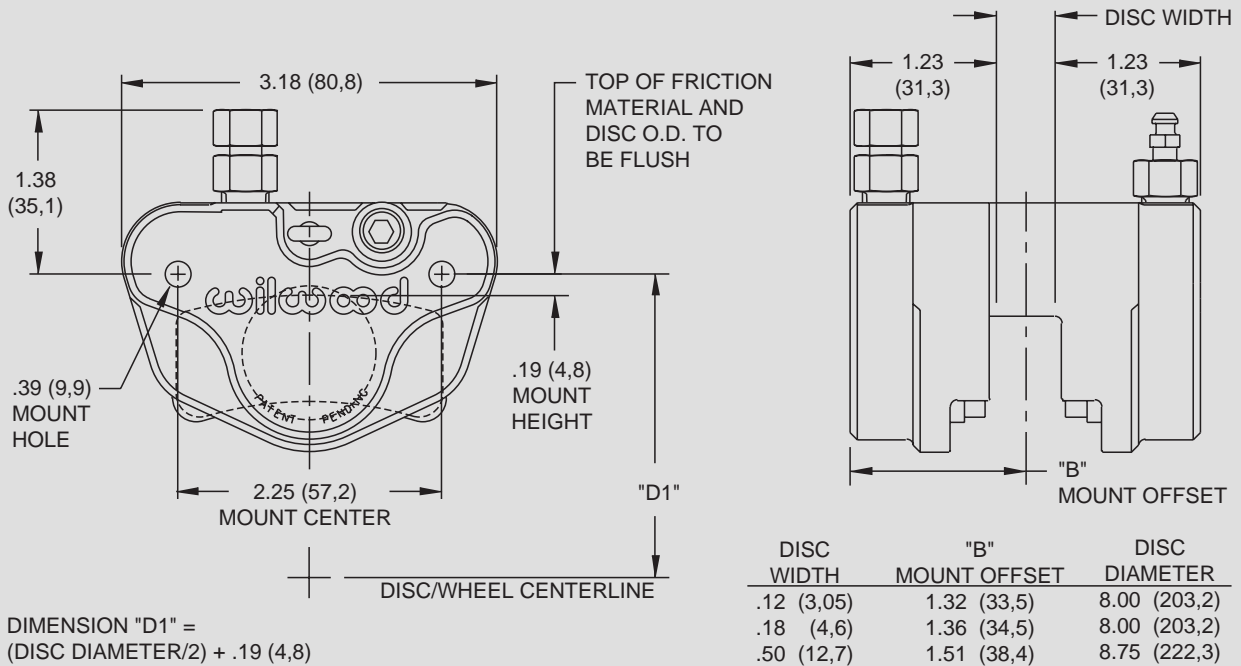
Wilwood's **Kart / Jr. Dragster Caliper** has been designed specifically for racing. A unique self retracting and adjusting piston system⁽¹⁾ has been incorporated into this caliper which enables the piston to retract as the brake line pressure is reduced. The caliper can be mounted on either side of the vehicle and comes in three rotor widths to accommodate most applications. Weighing just 1.20 pounds, the caliper's lightweight billet design includes high performance, high friction brake pads. Additional features include deep cup stainless steel piston for reduced heat transfer, cotter pin, pad retainer, internal fluid passage and blue anodized finish. A specifically designed master cylinder is also available for use with this caliper (see page 107).



CALIPER ORDERING INFORMATION:⁽²⁾

BORE SIZE		DISC WIDTH		PART NUMBER
1.00"	25,4 mm	.12"	3,0 mm	120-5498
1.00"	25,4 mm	.18"	4,6 mm	120-5750
1.00"	25,4 mm	.50"	12,7 mm	120-5499

KART / JR. DRAGSTER CALIPER, MOUNTING DIMENSIONS:



SERVICE PARTS ORDERING INFORMATION:

CALIPER PART NO.	PISTON	SQ RING KIT (4 PK)	REBUILD KIT (NOTE 3)	BRAKE PAD SET (2 PK)
120-5498	200-5474 (1.00")	130-4320	220-5766	150-5602K
120-5499	200-5474 (1.00")	130-4320	220-5766	150-5602K
120-5750	200-5474 (1.00")	130-4320	220-5766	150-5602K

NOTES: (1) PATENT PENDING
(2) REFERENCE FRONT OF MANUAL FOR GENERAL ORDERING INFORMATION
(3) INCLUDES FITTINGS, ALL SEALS AND PAD RETAINERS

CALIPERS

WARNING: The user or installer of any product from this catalog must determine its suitability for their intended purpose or application