

STOPTECH

Balanced Brake Upgrades®



BIG BRAKE KITS

STAGE 1 & 2 BRAKE
UPGRADES

TWO-PIECE AEROROTOR®
DIRECT REPLACEMENT KITS

SPORTSTOP® DIRECT
REPLACEMENT ROTORS

STAINLESS STEEL
BRAKE LINES

BRAKE PADS:
STREET & RACE

BRAKE FLUID

Championship Winning
Balanced Brake Upgrades®
for Your Street and Track Day Car



"Winning championships takes the best equipment.
We choose StopTech."

-Will Turner

TURNER MOTORSPORT, 2006 GRAND-AM CUP:
GRAND SPORT DRIVER and TEAM CHAMPIONSHIPS
STREET TUNER DRIVER and TEAM CHAMPIONSHIPS

Big Brake Kits

Part Number	Model	Years		Type	Front		Rear	
					Caliper	Rotor	Caliper	Rotor
ACURA								
83.057.4300.xx	Integra except Type R	1990	2001	F	ST-40	328x28		
83.054.4300.xx	Integra Type R	1997	2001	F	ST-40	328x28		
83.055.4300.xx	NSX	1991	2005	F	ST-40	328x28		
83.055.0043.xx	NSX (Includes ST-10 Parking Brake Calipers)	1991	2005	R			ST-40/10	328x28
83.055.4343.xx	NSX (Includes ST-10 Parking Brake Calipers)	1991	2005	4W	ST-40	328x28	ST-40/10	328x28
87.055.0043.xx	NSX - RACE ONLY (Deletes Parking Brake; Pads Not Included)	1991	2005	R			ST-40	328x28
83.060.4700.xx	RL (Special Order; 60 Day Delivery)	1996	2004	F	ST-40	355x32		
83.060.4743.xx	RL (Special Order; 60 Day Delivery)	1996	2004	4W	ST-40	355x32	ST-40	328x28
83.432.4300.xx	RSX except Type S	2002	2006	F	ST-40	328x28		
83.058.4300.xx	RSX Type S	2002	2006	F	ST-40	328x28		
83.059.4300.xx	TL w/ 5AT	2004	2006	F	ST-40	328x28		
83.059.4300.xx	TSX	2004	2006	F	ST-40	328x28		
83.059.0023.xx	TSX (Includes ST-10 Parking Brake Calipers)	2004	2006	R			ST-22/10	328x28
83.059.4323.xx	TSX (Includes ST-10 Parking Brake Calipers)	2004	2006	4W	ST-40	328x28	ST-22/10	328x28
AUDI								
83.886.4300.xx	A3 1.8T 20V (A4 Chassis) - Non-U.S. Model	1996	2003	F	ST-40	328x28		
83.892.4300.xx	A3 - All (A5 Chassis) - Requires 3mm Spacers to Fit Stock 5 Spoke Wheels	2006	2006	F	ST-40	328x28		
83.102.4600.xx	A4 - All (B5 Chassis)	1996	2001	F	ST-40	332x32		
83.102.4700.xx	A4 - All (B5 Chassis)	1996	2001	F	ST-40	355x32		
83.130.4600.xx	A4 - All 1.8T (B6 Chassis)	2002	2005	F	ST-40	332x32		
83.130.4700.xx	A4 - All 1.8T (B6 Chassis)	2002	2005	F	ST-40	355x32		
83.130.6700.xx	A4 - All 1.8T (B6 Chassis)	2002	2005	F	ST-60	355x32		
80.130.6702.x0	A4 - All 1.8T (B6 Chassis) - ST-60 Caliper Upgrade for 83.130.4700 BBK	2002	2005	F	ST-60	-		
87.130.4600.xx	A4 - All 1.8T (B6 Chassis) - RACE ONLY (Pads Not Included)	2002	2005	F	ST-40	332x32		
87.130.4700.xx	A4 - All 1.8T (B6 Chassis) - RACE ONLY (Pads Not Included)	2002	2005	F	ST-40	355x32		
83.102.4600.xx	A6 Non-Quattro (C5 Chassis)	2002	2004	F	ST-40	332x32		
83.102.4700.xx	A6 Non-Quattro (C5 Chassis)	2002	2004	F	ST-40	355x32		
83.102.4600.xx	A6 - All 2.8L 30 Valve (C5 Chassis)	1998	2001	F	ST-40	332x32		
83.102.4700.xx	A6 - All 2.8L 30 Valve (C5 Chassis)	1998	2001	F	ST-40	355x32		
83.130.4600.xx	A6 Quattro 2.7T (C5 Chassis)	2000	2001	F	ST-40	332x32		
83.130.4700.xx	A6 Quattro 2.7T (C5 Chassis)	2000	2001	F	ST-40	355x32		
83.130.6700.xx	A6 Quattro 2.7T (C5 Chassis)	2000	2001	F	ST-60	355x32		
80.130.6702.x0	A6 Quattro 2.7T (C5 Chassis) - ST-60 Caliper Upgrade for 83.130.4700 BBK	2000	2001	F	ST-60	-		
87.130.4600.xx	A6 Quattro 2.7T (C5 Chassis) - RACE ONLY (Pads Not Included)	2000	2001	F	ST-40	332x32		
87.130.4700.xx	A6 Quattro 2.7T (C5 Chassis) - RACE ONLY (Pads Not Included)	2000	2001	F	ST-40	355x32		
83.130.4600.xx	A6 Quattro 2.7T; 2 Pad Front Caliper (C5 Chassis)	2002	2004	F	ST-40	332x32		
83.130.4700.xx	A6 Quattro 2.7T; 2 Pad Front Caliper (C5 Chassis)	2002	2004	F	ST-40	355x32		
83.130.6700.xx	A6 Quattro 2.7T; 2 Pad Front Caliper (C5 Chassis)	2002	2004	F	ST-60	355x32		
80.130.6702.x0	A6 Quattro 2.7T; 2 Pad Front Caliper (C5 Chassis) - ST-60 Caliper Upgrade for 83.130.4700 BBK	2002	2004	F	ST-60	-		
87.130.4600.xx	A6 Quattro 2.7T; 2 Pad Front Caliper (C5 Chassis) - RACE ONLY (Pads Not Included)	2002	2004	F	ST-40	332x32		
87.130.4700.xx	A6 Quattro 2.7T; 2 Pad Front Caliper (C5 Chassis) - RACE ONLY (Pads Not Included)	2002	2004	F	ST-40	355x32		
83.105.4600.xx	A6 Quattro 2.7T; 4 Pad Front Caliper (C5 Chassis)	2002	2004	F	ST-40	332x32		
83.130.4600.xx	A6 Quattro 3.0L (C5 Chassis)	2002	2004	F	ST-40	332x32		
83.130.4700.xx	A6 Quattro 3.0L (C5 Chassis)	2002	2004	F	ST-40	355x32		
83.130.6700.xx	A6 Quattro 3.0L (C5 Chassis)	2002	2004	F	ST-60	355x32		
80.130.6702.x0	A6 Quattro 3.0L (C5 Chassis) - ST-60 Caliper Upgrade for 83.130.4700 BBK	2002	2004	F	ST-60	-		
87.130.4600.xx	A6 Quattro 3.0L (C5 Chassis) - RACE ONLY (Pads Not Included)	2002	2004	F	ST-40	332x32		
87.130.4700.xx	A6 Quattro 3.0L (C5 Chassis) - RACE ONLY (Pads Not Included)	2002	2004	F	ST-40	355x32		
83.105.4600.xx	A6 Quattro 4.2L (C5 Chassis)	2000	2004	F	ST-40	332x32		
83.130.4600.xx	Allroad; 2 Pad Front Caliper	2001	2006	F	ST-40	332x32		
83.130.4700.xx	Allroad; 2 Pad Front Caliper	2001	2006	F	ST-40	355x32		
83.130.6700.xx	Allroad; 2 Pad Front Caliper	2001	2006	F	ST-60	355x32		
80.130.6702.x0	Allroad; 2 Pad Front Caliper - ST-60 Caliper Upgrade for 83.130.4700 BBK	2001	2006	F	ST-60	-		
87.130.4600.xx	Allroad; 2 Pad Front Caliper - RACE ONLY (Pads Not Included)	2001	2006	F	ST-40	332x32		

Big Brake Kits

Part Number	Model	Years		Type	Front		Rear	
					Caliper	Rotor	Caliper	Rotor
AUDI (continued)								
87.130.4700.xx	Allroad; 2 Pad Front Caliper - RACE ONLY (Pads Not Included)	2001	2006	F	ST-40	355x32		
83.105.4600.xx	Allroad; 4 Pad Front Caliper	2001	2006	F	ST-40	332x32		
83.107.4700.xx	RS4 (B5 Chassis)	1999	2002	F	ST-40	355x32		
83.107.6700.xx	RS4 (B5 Chassis)	1999	2002	F	ST-60	355x32		
83.107.0043.xx	RS4 (B5 Chassis) - Includes ST-10 Parking Brake Calipers	1999	2002	R			ST-40/10	328x28
83.107.4743.xx	RS4 (B5 Chassis) - Includes ST-10 Parking Brake Calipers	1999	2002	4W	ST-40	355x32	ST-40/10	328x28
83.107.6743.xx	RS4 (B5 Chassis) - Includes ST-10 Parking Brake Calipers	1999	2002	4W	ST-60	355x32	ST-40/10	328x28
83.100.4300.xx	S3 (A4 Chassis) - Fits Stock Wheels	1999	2003	F	ST-40	328x28		
83.100.4700.xx	S3 (A4 Chassis)	1999	2003	F	ST-40	355x32		
83.109.4600.xx	S4 (B4 Chassis) - Does NOT Fit Vehicles w/ "UFO" Internal Front Disc Brakes	1992	1994	F	ST-40	332x32		
83.130.4600.xx	S4 (B5 Chassis) - Fits Stock Wheels	1999	2002	F	ST-40	332x32		
83.130.4700.xx	S4 (B5 Chassis)	1999	2002	F	ST-40	355x32		
83.130.6700.xx	S4 (B5 Chassis)	1999	2002	F	ST-60	355x32		
80.130.6702.x0	S4 (B5 Chassis) - ST-60 Caliper Upgrade for 83.130.4700 BBK	1999	2002	F	ST-60	-		
83.130.0023.xx	S4 (B5 Chassis) - Includes ST-10 Parking Brake Calipers; Call for Availability	1999	2002	R			ST-22/10	328x28
83.130.4623.xx	S4 (B5 Chassis) - Includes ST-10 Parking Brake Calipers; Call for Availability	1999	2002	4W	ST-40	332x32	ST-22/10	328x28
83.130.4723.xx	S4 (B5 Chassis) - Includes ST-10 Parking Brake Calipers; Call for Availability	1999	2002	4W	ST-40	355x32	ST-22/10	328x28
83.130.6723.xx	S4 (B5 Chassis) - Includes ST-10 Parking Brake Calipers; Call for Availability	1999	2002	4W	ST-60	355x32	ST-22/10	328x28
87.130.4600.xx	S4 (B5 Chassis) - RACE ONLY (Pads Not Included)	1999	2002	F	ST-40	332x32		
87.130.4700.xx	S4 (B5 Chassis) - RACE ONLY (Pads Not Included)	1999	2002	F	ST-40	355x32		
87.130.0023.xx	S4 (B5 Chassis) - RACE ONLY (Deletes Parking Brake; Pads Not Included)	1999	2002	R			ST-22	328x28
87.130.4623.xx	S4 (B5 Chassis) - RACE ONLY (Deletes Parking Brake; Pads Not Included)	1999	2002	4W	ST-40	332x32	ST-22	328x28
87.130.4723.xx	S4 (B5 Chassis) - RACE ONLY (Deletes Parking Brake; Pads Not Included)	1999	2002	4W	ST-40	355x32	ST-22	328x28
83.130.4700.xx	S4 (B6, B7 Chassis)	2004	2006	F	ST-40	355x32		
83.130.6700.xx	S4 (B6, B7 Chassis)	2004	2006	F	ST-60	355x32		
80.130.6702.x0	S4 (B6, B7 Chassis) - ST-60 Caliper Upgrade for 83.130.4700 BBK	2004	2006	F	ST-60	-		
87.130.4600.xx	S4 (B6, B7 Chassis) - RACE ONLY (Pads Not Included)	2002	2005	F	ST-40	332x32		
87.130.4700.xx	S4 (B6, B7 Chassis) - RACE ONLY (Pads Not Included)	2002	2005	F	ST-40	355x32		
83.109.4600.xx	S6 (C4 Chassis)	1995	1998	F	ST-40	332x32		
83.105.4600.xx	S6 (C5 Chassis)	2002	2004	F	ST-40	332x32		
83.100.4300.xx	TT 1.8T - Fits Stock Wheels	1998	2006	F	ST-40	328x28		
83.100.4700.xx	TT 1.8T	1998	2006	F	ST-40	355x32		
83.110.4700.xx	TT 3.2L	2004	2006	F	ST-40	355x32		
BMW								
83.131.4600.xx	M Coupe, M Roadster	1998	2002	F	ST-40	332x32		
83.131.4700.xx	M Coupe, M Roadster	1998	2002	F	ST-40	355x32		
83.131.4600.xx	M3 (E36)	1995	1999	F	ST-40	332x32		
83.131.4700.xx	M3 (E36)	1995	1999	F	ST-40	355x32		
83.131.0046.xx	M3 (E36)	1995	1999	R			ST-40	332x32
83.131.4646.xx	M3 (E36)	1995	1999	4W	ST-40	332x32	ST-40	332x32
83.131.4746.xx	M3 (E36)	1995	1999	4W	ST-40	355x32	ST-40	332x32
83.137.4600.xx	M3 (E46) including CSL & ZCP Competition Package	2001	2006	F	ST-40	332x32		
82.137.4700.xx	M3 (E46) including CSL & ZCP Competition Package - 1 Piece AeroRotors	2001	2006	F	ST-40	355x32		
83.137.4700.xx	M3 (E46) including CSL & ZCP Competition Package	2001	2006	F	ST-40	355x32		
83.137.6800.xx	M3 (E46) including CSL & ZCP Competition Package - Call for Availability	2001	2006	F	ST-60	380x32		
83.137.002G.xx	M3 (E46) including CSL & ZCP Competition Package	2001	2006	R			ST-22	345x28
83.137.0047.xx	M3 (E46) including CSL & ZCP Competition Package	2001	2006	R			ST-40	355x32
83.137.472G.xx	M3 (E46) including CSL & ZCP Competition Package	2001	2006	4W	ST-40	355x32	ST-22	345x28
83.137.4747.xx	M3 (E46) including CSL & ZCP Competition Package	2001	2006	4W	ST-40	355x32	ST-40	355x32
83.137.6847.xx	M3 (E46) including CSL & ZCP Competition Package - Call for Availability	2001	2006	4W	ST-60	380x32	ST-40	355x32
83.135.4700.xx	M5 (E39) - Fits Stock Wheels	2000	2004	F	ST-40	355x32		
83.135.002G.xx	M5 (E39) - Fits Stock Wheels	2000	2004	R			ST-22	345x28
83.135.0047.xx	M5 (E39)	2000	2004	R			ST-40	355x32
83.135.472G.xx	M5 (E39) - Fits Stock Wheels	2000	2004	4W	ST-40	355x32	ST-22	345x28
83.135.4747.xx	M5 (E39)	2000	2004	4W	ST-40	355x32	ST-40	355x32

Big Brake Kits

Part Number	Model	Years		Type	Front		Rear	
					Caliper	Rotor	Caliper	Rotor
BMW (continued)								
83.153.6D00.xx	M5 (E60)	2006	2006	F	ST-60	380x35		
83.153.0048.xx	M5 (E60)	2006	2006	R			ST-45	380x32
83.153.6D48.xx	M5 (E60)	2006	2006	4W	ST-60	380x35	ST-45	380x32
83.153.6D00.xx	M6 (E63)	2006	2006	F	ST-60	380x35		
83.153.0048.xx	M6 (E63)	2006	2006	R			ST-45	380x32
83.153.6D48.xx	M6 (E63)	2006	2006	4W	ST-60	380x35	ST-45	380x32
83.143.4700.xx	X5 3.0i, 4.4i - Fits Stock Wheels	2000	2006	F	ST-40	355x32		
83.143.4C00.xx	X5 - All	2000	2006	F	ST-40	355x35		
83.143.0027.xx	X5 - All; Fits Stock Wheels	2000	2006	R			ST-22	355x32
83.143.4727.xx	X5 3.0i, 4.4i - Fits Stock Wheels	2000	2006	4W	ST-40	355x32	ST-22	355x32
83.143.4C27.xx	X5 - All	2000	2006	4W	ST-40	355x35	ST-22	355x32
83.133.4300.xx	Z3 except MZ3	1996	2002	F	ST-40	328x28		
83.133.4600.xx	Z3 except MZ3	1996	2002	F	ST-40	332x32		
83.133.4300.xx	Z4 2.5i & 3.0i (NOT including 3.0Si or MZ4)	2003	2006	F	ST-40	328x28		
83.133.4600.xx	Z4 2.5i & 3.0i (NOT including 3.0Si or MZ4)	2003	2006	F	ST-40	332x32		
83.139.4700.xx	Z8 - Fits Stock Wheels w/ 4mm Spacers	2000	2003	F	ST-40	355x32		
83.133.4300.xx	323, 325, 328 Series (E36, E46) except AWD	1992	2006	F	ST-40	328x28		
83.133.4600.xx	323, 325, 328 Series (E36, E46) except AWD	1992	2006	F	ST-40	332x32		
83.142.0023.xx	323 Series (E36)	1997	35765	R			ST-22	328x28
83.142.4323.xx	323 Series (E36)	1997	35765	4W	ST-40	328x28	ST-22	328x28
83.142.4623.xx	323 Series (E36)	1997	35765	4W	ST-40	332x32	ST-22	328x28
83.149.0023.xx	323 Series (E36)	35765	2000	R			ST-22	328x28
83.149.4323.xx	323 Series (E36)	35765	2000	4W	ST-40	328x28	ST-22	328x28
83.149.4623.xx	323 Series (E36)	35765	2000	4W	ST-40	332x32	ST-22	328x28
83.142.0023.xx	325, 328 Series (E36) w/ Solid Rear Rotors	1992	1999	R			ST-22	328x28
83.142.4323.xx	325, 328 Series (E36) w/ Solid Rear Rotors	1992	1999	4W	ST-40	328x28	ST-22	328x28
83.142.4623.xx	325, 328 Series (E36) w/ Solid Rear Rotors	1992	1999	4W	ST-40	332x32	ST-22	328x28
83.149.0023.xx	325, 328 Series (E36) w/ Vented Rear Rotors	1997	1999	R			ST-22	328x28
83.149.4323.xx	325, 328 Series (E36) w/ Vented Rear Rotors	1997	1999	4W	ST-40	328x28	ST-22	328x28
83.149.4623.xx	325, 328 Series (E36) w/ Vented Rear Rotors	1997	1999	4W	ST-40	332x32	ST-22	328x28
83.133.0023.xx	323, 325, 328 Series (E46) except AWD	2000	2006	R			ST-22	328x28
83.133.4323.xx	323, 325, 328 Series (E46) except AWD	2000	2006	4W	ST-40	328x28	ST-22	328x28
83.133.4623.xx	323, 325, 328 Series (E46) except AWD	2000	2006	4W	ST-40	332x32	ST-22	328x28
87.133.4300.xx	323, 325, 328 Series (E36, E46) except AWD - RACE ONLY (Pistons Sized for Dual Master & Deleted Booster; Pads Not Included)	1992	2006	F	ST-40	328x28		
87.133.002E.xx	323, 325, 328 Series (E46) except AWD - RACE ONLY (Deletes Parking Brake; Pistons Sized for Dual Master & Deleted Booster; Pads Not Included)	2000	2006	R			ST-22	282x25
87.133.432E.xx	323, 325, 328 Series (E46) except AWD - RACE ONLY (Deletes Parking Brake; Pistons Sized for Dual Master & Deleted Booster; Pads Not Included)	2000	2006	4W	ST-40	328x28	ST-22	282x25
83.148.4600.xx	330 Series (E46) except AWD	2000	2006	F	ST-40	332x32		
TBA	330 Series (E90) except AWD - Call for Availability	2006	2006	F	ST-40	355x32		
TBA	335 Series (E90) except AWD - Call for Availability	2006	2006	F	ST-40	355x32		
83.132.4700.xx	525, 528 Series (E39) except Touring	1996	2003	F	ST-40	355x32		
83.135.002G.xx	525, 528 Series (E39) except Touring	1996	2003	R			ST-22	345x28
83.135.0047.xx	525, 528 Series (E39) except Touring	1996	2003	R			ST-40	355x32
83.132.472G.xx	525, 528 Series (E39) except Touring	1996	2003	4W	ST-40	355x32	ST-22	345x28
83.132.4747.xx	525, 528 Series (E39) except Touring	1996	2003	4W	ST-40	355x32	ST-40	355x32
83.135.4700.xx	530, 540 Series (E39) except Touring	1996	2003	F	ST-40	355x32		
83.135.002G.xx	530, 540 Series (E39) except Touring	1996	2003	R			ST-22	345x28
83.135.0047.xx	530, 540 Series (E39) except Touring	1996	2003	R			ST-40	355x32
83.135.472G.xx	530, 540 Series (E39) except Touring	1996	2003	4W	ST-40	355x32	ST-22	345x28
83.135.4747.xx	530, 540 Series (E39) except Touring	1996	2003	4W	ST-40	355x32	ST-40	355x32
83.152.6800.xx	525, 530 Series (E60)	2004	2006	F	ST-60	380x32		
83.152.0047.xx	525, 530 Series (E60)	2004	2006	R			ST-40	355x32
83.152.6847.xx	525, 530 Series (E60)	2004	2006	4W	ST-60	380x32	ST-40	355x32

Big Brake Kits

Part Number	Model	Years		Type	Front		Rear		
					Caliper	Rotor	Caliper	Rotor	
BMW (continued)									
83.150.6800.xx	545 Series (E60)	2004	2005	F	ST-60	380x32			
83.150.0047.xx	545 Series (E60)	2004	2005	R			ST-40	355x32	
83.150.6847.xx	545 Series (E60)	2004	2005	4W	ST-60	380x32	ST-40	355x32	
83.150.6800.xx	550 Series (E60)	2006	2006	F	ST-60	380x32			
83.150.0047.xx	550 Series (E60)	2006	2006	R			ST-40	355x32	
83.150.6847.xx	550 Series (E60)	2006	2006	4W	ST-60	380x32	ST-40	355x32	
83.150.6800.xx	645 Series (E63, E64)	2004	2005	F	ST-60	380x32			
83.150.0047.xx	645 Series (E63, E64)	2004	2005	R			ST-40	355x32	
83.150.6847.xx	645 Series (E63, E64)	2004	2005	4W	ST-60	380x32	ST-40	355x32	
83.150.6800.xx	650 Series (E63, E64)	2006	2006	F	ST-60	380x32			
83.150.0047.xx	650 Series (E63, E64)	2006	2006	R			ST-40	355x32	
83.150.6847.xx	650 Series (E63, E64)	2006	2006	4W	ST-60	380x32	ST-40	355x32	
CADILLAC									
83.182.6800.xx	Escalade	2002	2005	F	ST-60	380x32			
83.182.0048.xx	Escalade	2002	2005	R			ST-45	380x32	
83.182.6848.xx	Escalade	2002	2005	4W	ST-60	380x32	ST-45	380x32	
TBA	Escalade - Call for Availability	2007	2007	F	ST-60	380x35			
TBA	Escalade - Call for Availability	2007	2007	R			TBA	TBA	
TBA	Escalade - Call for Availability	2007	2007	4W	ST-60	380x35	TBA	TBA	
83.186.4700.xx	XLR including V-Spec	2004	2006	F	ST-40	355x32			
83.186.6700.xx	XLR including V-Spec	2004	2006	F	ST-60	355x32			
83.186.0047.xx	XLR including V-Spec	2004	2006	R			ST-40	355x32	
83.186.4747.xx	XLR including V-Spec	2004	2006	4W	ST-40	355x32	ST-40	355x32	
83.186.6747.xx	XLR including V-Spec	2004	2006	4W	ST-60	355x32	ST-40	355x32	
87.186.4400.xx	XLR including V-Spec - RACE ONLY (Pistons Sized for Dual Master & Deleted Booster; Billet Steel Brackets; Pads Not Included)	2005	2006	F	ST-40	328x35			
87.186.0043.xx	XLR including V-Spec - RACE ONLY (Deletes Parking Brake; Pistons Sized for Dual Master & Deleted Booster; Billet Steel Brackets; Pads Not Included)	2005	2006	R			ST-40	328x28	
CHEVROLET									
83.182.6800.xx	Avalanche ½ Ton	2002	2005	F	ST-60	380x32			
83.182.0048.xx	Avalanche ½ Ton w/ Two Piston Rear Caliper	2002	2005	R			ST-45	380x32	
83.182.6848.xx	Avalanche ½ Ton w/ Two Piston Rear Caliper	2002	2005	4W	ST-60	380x32	ST-45	380x32	
TBA	Tahoe; In Development - Call for Availability	2007	2007	F	ST-60	380x35			
TBA	Tahoe; In Development - Call for Availability	2007	2007	R			TBA	TBA	
TBA	Tahoe; In Development - Call for Availability	2007	2007	4W	ST-60	380x35	TBA	TBA	
83.183.4600.xx	Camaro	1998	2002	F	ST-40	332x32			
83.180.4700.xx	Corvette C5	1997	2004	F	ST-40	355x32			
83.180.6700.xx	Corvette C5	1997	2004	F	ST-60	355x32			
83.180.0047.xx	Corvette C5	1997	2004	R			ST-40	355x32	
83.180.4747.xx	Corvette C5	1997	2004	4W	ST-40	355x32	ST-40	355x32	
83.180.6747.xx	Corvette C5	1997	2004	4W	ST-60	355x32	ST-40	355x32	
87.180.4400.xx	Corvette C5 - RACE ONLY (Pistons Sized for Dual Master & Deleted Booster; Billet Steel Brackets; Pads Not Included)	1997	2004	F	ST-40	328x35			
87.180.0043.xx	Corvette C5 - RACE ONLY (Deletes Parking Brake; Pistons Sized for Dual Master & Deleted Booster; Billet Steel Brackets; Pads Not Included)	1997	2004	R			ST-40	328x28	
83.186.4700.xx	Corvette C6 Base Model, Z51	2005	2006	F	ST-40	355x32			
83.186.6700.xx	Corvette C6 Base Model, Z51	2005	2006	F	ST-60	355x32			
83.186.0047.xx	Corvette C6 Base Model, Z51	2005	2006	R			ST-40	355x32	
83.186.4747.xx	Corvette C6 Base Model, Z51	2005	2006	4W	ST-40	355x32	ST-40	355x32	
83.186.6747.xx	Corvette C6 Base Model, Z51	2005	2006	4W	ST-60	355x32	ST-40	355x32	
83.187.6700.xx	Corvette C6 Z06 - Fits Stock Wheels	2006	2006	F	ST-60	355x32			
83.186.0047.xx	Corvette C6 Z06 - Fits Stock Wheels	2006	2006	R			ST-40	355x32	
83.187.6747.xx	Corvette C6 Z06 - Fits Stock Wheels	2006	2006	4W	ST-60	355x32	ST-40	355x32	
87.186.4400.xx	Corvette C6 - RACE ONLY (Pistons Sized for Dual Master & Deleted Booster; Billet Steel Brackets; Pads Not Included)	2005	2006	F	ST-40	328x35			

Big Brake Kits

Part Number	Model	Years		Type	Front		Rear		
					Caliper	Rotor	Caliper	Rotor	
CHEVROLET (continued)									
87.186.0043.xx	Corvette C6 - RACE ONLY (Deletes Parking Brake; Pistons Sized for Dual Master & Deleted Booster; Billet Steel Brackets; Pads Not Included)	2005	2006	R			ST-40	328x28	
83.182.6800.xx	Silverado ½ Ton except HD; except Crew Cab	1999	2004	F	ST-60	380x32			
83.182.6800.xx	Silverado ½ Ton; Hybrid Electric	2004	2005	F	ST-60	380x32			
83.182.6800.xx	Silverado SS; 4WD	2004	2005	F	ST-60	380x32			
83.182.6800.xx	Suburban ½ Ton w/ Rear Disc Brakes	2000	2005	F	ST-60	380x32			
83.182.0048.xx	Suburban ½ Ton w/ Two Piston Rear OE Calipers	2000	2005	R			ST-45	380x32	
83.182.6848.xx	Suburban ½ Ton w/ Two Piston Rear OE Calipers	2000	2005	4W	ST-60	380x32	ST-45	380x32	
83.182.6800.xx	Tahoe; Rear Disc Brakes	2000	2005	F	ST-60	380x32			
83.182.0048.xx	Tahoe; Rear Disc Brakes	2000	2005	R			ST-45	380x32	
83.182.6848.xx	Tahoe; Rear Disc Brakes	2000	2005	4W	ST-60	380x32	ST-45	380x32	
TBA	Tahoe; In Development - Call for Availability	2007	2007	F	ST-60	380x35			
TBA	Tahoe; In Development - Call for Availability	2007	2007	R			TBA	TBA	
TBA	Tahoe; In Development - Call for Availability	2007	2007	4W	ST-60	380x35	TBA	TBA	
CHRYSLER									
83.561.4600.xx	Crossfire	2004	2005	F	ST-40	332x32			
83.561.4700.xx	Crossfire	2004	2005	F	ST-40	355x32			
82.240.2300.51	PT Cruiser (Black Calipers, 1 Piece Slotted Rotors)	2000	2006	F	ST-20	328x28			
83.240.2300.5x	PT Cruiser (Black Calipers, 2 Piece Rotors)	2000	2006	F	ST-20	328x28			
83.240.4300.xx	PT Cruiser (2 Piece Rotors)	2000	2006	F	ST-40	328x28			
83.560.4600.xx	Crossfire SRT-6	2005	2005	F	ST-40	332x32			
83.560.4700.xx	Crossfire SRT-6	2005	2005	F	ST-40	355x32			
83.560.0043.xx	Crossfire SRT-6	2005	2005	R			ST-40	328x28	
83.560.4643.xx	Crossfire SRT-6	2005	2005	4W	ST-40	332x32	ST-40	328x28	
83.560.4743.xx	Crossfire SRT-6	2005	2005	4W	ST-40	355x32	ST-40	328x28	
83.241.4700.xx	300 & 300C 2WD (Not including AWD or SRT-8) - Fits Stock 18" Wheels	2005	2006	F	ST-40	355x32			
83.241.0047.xx	300 & 300C 2WD (Not including AWD or SRT-8) - Fits Stock 18" Wheels	2005	2006	R			ST-40	355x32	
83.241.4747.xx	300 & 300C 2WD (Not including AWD or SRT-8) - Fits Stock 18" Wheels	2005	2006	4W	ST-40	355x32	ST-40	355x32	
83.242.6800.xx	300C SRT-8	2006	2006	F	ST-60	380x32			
83.242.0047.xx	300C SRT-8	2006	2006	R			ST-40	355x32	
83.242.6847.xx	300C SRT-8	2006	2006	4W	ST-60	380x32	ST-40	355x32	
DODGE									
83.241.4700.xx	Charger except SRT-8 - Fits Stock 18" Wheels	2006	2006	F	ST-40	355x32			
83.241.0047.xx	Charger except SRT-8 - Fits Stock 18" Wheels	2006	2006	R			ST-40	355x32	
83.241.4747.xx	Charger except SRT-8 - Fits Stock 18" Wheels	2006	2006	4W	ST-40	355x32	ST-40	355x32	
83.242.6800.xx	Charger SRT-8	2006	2006	F	ST-60	380x32			
83.242.0047.xx	Charger SRT-8	2006	2006	R			ST-40	355x32	
83.242.6847.xx	Charger SRT-8	2006	2006	4W	ST-60	380x32	ST-40	355x32	
83.241.4700.xx	Magnum 2WD (Not including AWD or SRT-8) - Fits Stock 18" Wheels	2005	2006	F	ST-40	355x32			
83.241.0047.xx	Magnum 2WD (Not including AWD or SRT-8) - Fits Stock 18" Wheels	2005	2006	R			ST-40	355x32	
83.241.4747.xx	Magnum 2WD (Not including AWD or SRT-8) - Fits Stock 18" Wheels	2005	2006	4W	ST-40	355x32	ST-40	355x32	
83.242.6800.xx	Magnum SRT-8	2006	2006	F	ST-60	380x32			
83.242.0047.xx	Magnum SRT-8	2006	2006	R			ST-40	355x32	
83.242.6847.xx	Magnum SRT-8	2006	2006	4W	ST-60	380x32	ST-40	355x32	
82.240.2300.51	SRT-4 (Black Calipers, 1 Piece Slotted Rotors)	2003	2005	F	ST-20	328x28			
83.240.2300.5x	SRT-4 (Black Calipers, 2 Piece Rotors)	2003	2005	F	ST-20	328x28			
83.240.4300.xx	SRT-4 (2 Piece Rotors)	2003	2005	F	ST-40	328x28			
83.623.4600.xx	Stealth AWD	1991	1996	F	ST-40	332x32			
83.623.4700.xx	Stealth AWD	1991	1996	F	ST-40	355x32			
83.261.4600.xx	Viper - Fits Stock Wheels	1992	1995	F	ST-40	332x32			
83.261.4700.xx	Viper	1992	1995	F	ST-40	355x32			
83.261.6700.xx	Viper	1992	1995	F	ST-60	355x32			
83.261.4743.xx	Viper (Includes Brackets to Reuse Stock Parking Brake Calipers)	1992	1995	4W	ST-40	355x32	ST-40	328x28	
83.261.6743.xx	Viper (Includes Brackets to Reuse Stock Parking Brake Calipers)	1992	1995	4W	ST-60	355x32	ST-40	328x28	
87.261.4743.xx	Viper - RACE ONLY (Deletes Parking Brake; Pads Not Included)	1992	1995	4W	ST-40	355x32	ST-40	328x28	

Unless otherwise noted, Big Brake Kits do NOT fit stock wheels. Wheel fitment charts are available at www.stoptech.com.

Big Brake Kits

Part Number	Model	Years		Type	Front		Rear	
					Caliper	Rotor	Caliper	Rotor
DODGE (continued)								
80.261.6402.x0	Viper - ST-60 Caliper Upgrade for 83.261.4700 Front Only BBK	1992	1995	F	ST-60	-		
80.261.6404.x0	Viper - ST-60 Caliper Upgrade for 83.261.4743 Four Wheel BBK	1992	1995	F	ST-60	-		
83.260.4600.xx	Viper - Fits Stock Wheels	1996	2000	F	ST-40	332x32		
83.260.4700.xx	Viper - Fits Stock 18" Wheels	1996	2000	F	ST-40	355x32		
83.260.6700.xx	Viper	1996	2000	F	ST-60	355x32		
83.260.4743.xx	Viper - Fits Stock 18" Wheels (Includes Brackets to Reuse Stock Parking Brake Calipers)	1996	2000	4W	ST-40	355x32	ST-40	328x28
83.260.6743.xx	Viper (Includes Brackets to Reuse Stock Parking Brake Calipers)	1996	2000	4W	ST-60	355x32	ST-40	328x28
87.260.4743.xx	Viper - RACE ONLY; Fits Stock 18" Wheels (Deletes Parking Brake; Pads Not Included)	1996	2000	4W	ST-40	355x32	ST-40	328x28
80.260.6702.x0	Viper - ST-60 Caliper Upgrade for 83.260.4700 Front Only BBK	1996	2000	F	ST-60	-		
80.260.6704.x0	Viper - ST-60 Caliper Upgrade for 83.260.4743 Four Wheel BBK	1996	2000	F	ST-60	-		
83.262.4700.xx	Viper w/ ABS - Fits Stock 18" Wheels	2001	2002	F	ST-40	355x32		
83.262.6700.xx	Viper w/ ABS	2001	2002	F	ST-60	355x32		
83.262.4643.xx	Viper w/ ABS (Includes ST-10 Parking Brake Calipers)	2001	2002	4W	ST-40	332x32	ST-40/10	328x28
83.262.4743.xx	Viper w/ ABS (Includes ST-10 Parking Brake Calipers)	2001	2002	4W	ST-40	355x32	ST-40/10	328x28
83.262.6743.xx	Viper w/ ABS (Includes ST-10 Parking Brake Calipers)	2001	2002	4W	ST-60	355x32	ST-40/10	328x28
87.262.4743.xx	Viper w/ ABS - RACE ONLY (Deletes Parking Brake; Pads Not Included)	2001	2002	4W	ST-40	355x32	ST-40	328x28
80.262.6702.x0	Viper w/ ABS - ST-60 Caliper Upgrade for 83.262.4700 Front Only BBK	2001	2002	F	ST-60	-		
80.262.6704.x0	Viper w/ ABS - ST-60 Caliper Upgrade for 83.262.4743 Four Wheel BBK	2001	2002	F	ST-60	-		
83.263.6700.xx	Viper SRT-10 & Competition Coupe - Call for Availability	2003	2006	F	ST-60	355x32		
80.263.6702.x0	Viper SRT-10 & Competition Coupe - ST-60 Caliper Upgrade for Use with Stock Rotors or StopTech DRK 81.263.99x1 - Call for Availability	2003	2006	F	ST-60	-		
FERRARI								
83.305.4700.xx	348, 355 - Fits Stock Wheels	1989	1999	F	ST-40	355x32		
83.305.0046.xx	348, 355 - Fits Stock Wheels	1989	1999	R			ST-40	332x32
83.305.4746.xx	348, 355 - Fits Stock Wheels	1989	1999	4W	ST-40	355x32	ST-40	332x32
83.306.6700.xx	360 Modena - Call for Availability	1999	2004	F	ST-40	355x32		
FORD								
83.322.4700.xx	Expedition 2WD w/ 12mm Studs DISCONTINUED	1997	1999	F	ST-40	355x32		
83.321.4700.xx	Expedition 2WD w/ 14mm Studs DISCONTINUED	1999	2002	F	ST-40	355x32		
83.320.4700.xx	Expedition 4WD w/ 4 Wheel ABS	1997	3/18/02	F	ST-40	355x32		
83.549.4300.xx	Fusion	2006	2006	F	ST-40	328x28		
87.549.4300.xx	Fusion RACE ONLY (Pistons Sized for Dual Masters & Deleted Booster; Pads Not Included)	2006	2006	F	ST-40	328x28		
87.549.002E.xx	Fusion RACE ONLY (Deletes Parking Brake; Pistons Sized for Dual Masters & Deleted Booster; Pads Not Included)	2006	2006	R			ST-22	282x25
87.549.432E.xx	Fusion RACE ONLY (Deletes Parking Brake; Pistons Sized for Dual Masters & Deleted Booster; Pads Not Included)	2006	2006	4W	ST-40	328x28	ST-22	282x25
83.322.4700.xx	F-150 2WD w/ 12mm Studs & 4 Wheel ABS DISCONTINUED	1997	1999	F	ST-40	355x32		
83.321.4700.xx	F-150 2WD w/ 14mm Studs & 4 Wheel ABS DISCONTINUED	1998	2003	F	ST-40	355x32		
83.323.4700.xx	F-150 4WD; 5 Lug; w/ 4 Wheel ABS; except 2004 New Model	12/2/98	2004	F	ST-40	355x32		
83.322.4700.xx	F-150 Lightning w/ 12mm Studs DISCONTINUED	1997	1998	F	ST-40	355x32		
83.321.4700.xx	F-150 Lightning w/ 14mm Studs DISCONTINUED	1999	2003	F	ST-40	355x32		
83.328.4600.xx	Mustang including Cobra, Bullitt, Mach One, & 10th Anniversary Edition (SN95)	1994	2004	F	ST-40	332x32		
83.328.4700.xx	Mustang including Cobra, Bullitt, Mach One, & 10th Anniversary Edition (SN95)	1994	2004	F	ST-40	355x32		
83.330.4700.xx	Mustang GT (S197)	2005	2006	F	ST-40	355x32		
83.330.6800.xx	Mustang GT (S197)	2005	2006	F	ST-60	380x32		
83.530.4700.xx	Thunderbird	2002	2005	F	ST-40	355x32		
83.530.0043.xx	Thunderbird (Includes ST-10 Parking Brake Calipers)	2002	2005	R			ST-40/10	328x28
83.530.4743.xx	Thunderbird (Includes ST-10 Parking Brake Calipers)	2002	2005	4W	ST-40	355x32	ST-40/10	328x28
GMC TRUCK								
83.182.6800.xx	Sierra ½ Ton; except HD	1999	2003	F	ST-60	380x32		
83.182.6800.xx	Sierra ½ Ton; except HD; except Crew Cab	2004	2004	F	ST-60	380x32		
83.182.6800.xx	Sierra ½ Ton; Hybrid Electric	2004	2005	F	ST-60	380x32		
83.182.6800.xx	Sierra SS; 4WD	2004	2004	F	ST-60	380x32		
83.182.6800.xx	Yukon except XL; Rear Disc	2000	2005	F	ST-60	380x32		
83.182.0048.xx	Yukon except XL; Two Piston Rear OE Calipers	2000	2005	R			ST-45	380x32

Big Brake Kits								
Part Number	Model	Years		Type	Front		Rear	
					Caliper	Rotor	Caliper	Rotor
GMC TRUCK (continued)								
83.182.6848.xx	Yukon except XL; Two Piston Rear OE Calipers	2000	2005	4W	ST-60	380x32	ST-45	380x32
83.182.6800.xx	Yukon XL ½ Ton	2000	2005	F	ST-60	380x32		
83.182.0048.xx	Yukon XL ½ Ton; 2-Piston Rear OE Calipers	2000	2005	R			ST-45	380x32
83.182.6848.xx	Yukon XL ½ Ton; 2-Piston Rear OE Calipers	2000	2005	4W	ST-60	380x32	ST-45	380x32
TBA	Yukon - Call for Availability	2007	2007	F	ST-60	380x35		
TBA	Yukon - Call for Availability	2007	2007	R			TBA	TBA
TBA	Yukon - Call for Availability	2007	2007	4W	ST-60	380x35	TBA	TBA
HOLDEN								
83.735.4600.xx	Commodore (VT, VX, VY, VZ)	1997	2005	F	ST-40	332x32		
83.735.4700.xx	Commodore (VT, VX, VY, VZ)	1997	2005	F	ST-40	355x32		
83.735.4600.xx	HSV GTO, Clubsport, Grange, Senator w/ 2 Piston Front Caliper	1997	2005	F	ST-40	332x32		
83.735.4700.xx	HSV GTO, Clubsport, Grange, Senator w/ 2 Piston Front Caliper	1997	2005	F	ST-40	355x32		
83.735.4600.xx	Monaro (V2, VZ)	2001	2005	F	ST-40	332x32		
83.735.4700.xx	Monaro (V2, VZ)	2001	2005	F	ST-40	355x32		
83.735.4600.xx	Ute (VU, VY, VZ)	2001	2005	F	ST-40	332x32		
83.735.4700.xx	Ute (VU, VY, VZ)	2001	2005	F	ST-40	355x32		
HONDA								
83.059.4300.xx	Accord Coupe V6 w/ 6MT	2003	2006	F	ST-40	328x28		
83.059.0023.xx	Accord Coupe V6 w/ 6MT (Includes ST-10 Parking Brake Calipers)	2003	2006	R			ST-22/10	328x28
83.059.4323.xx	Accord Coupe V6 w/ 6MT (Includes ST-10 Parking Brake Calipers)	2003	2006	4W	ST-40	328x28	ST-22/10	328x28
83.059.4300.xx	Accord Sedan V6 Hybrid	2006	2006	F	ST-40	328x28		
83.059.0023.xx	Accord Sedan V6 Hybrid (Includes ST-10 Parking Brake Calipers)	2006	2006	R			ST-22/10	328x28
83.059.4323.xx	Accord Sedan V6 Hybrid (Includes ST-10 Parking Brake Calipers)	2006	2006	4W	ST-40	328x28	ST-22/10	328x28
83.057.4300.xx	Civic EX Coupe w/ Rear Disc & ABS	1993	1995	F	ST-40	328x28		
83.057.4300.xx	Civic EX Sedan	1992	1995	F	ST-40	328x28		
83.427.4300.xx	Civic EX Sedan & Coupe	1996	2005	F	ST-40	328x28		
83.427.4300.xx	Civic GX Sedan	2001	2005	F	ST-40	328x28		
83.057.4300.xx	Civic LX Sedan w/ Rear Disc	1994	1995	F	ST-40	328x28		
83.427.4300.xx	Civic LX Sedan w/ ABS & A/T	1996	1996	F	ST-40	328x28		
83.427.4300.xx	Civic LX Sedan & Coupe	2004	2005	F	ST-40	328x28		
83.427.4300.xx	Civic Si	1999	2001	F	ST-40	328x28		
83.430.4300.xx	Civic Si	2002	2003	F	ST-40	328x28		
83.432.4300.xx	Civic Si	2004	2005	F	ST-40	328x28		
83.433.4300.xx	Civic Type R (Not Sold in U.S.)	1996	2000	F	ST-40	328x28		
83.058.4300.xx	Civic Type R (Not Sold in U.S.)	2002	2004	F	ST-40	328x28		
83.057.4300.xx	Del Sol Si w/ ABS	1995	1995	F	ST-40	328x28		
83.057.4300.xx	Del Sol VTEC	1993	1997	F	ST-40	328x28		
83.431.4300.xx	Prelude	1997	2001	F	ST-40	328x28		
83.429.4300.xx	S2000	2000	2005	F	ST-40	328x28		
83.429.4700.xx	S2000	2000	2005	F	ST-40	355x32		
87.429.002F.xx	S2000 - RACE ONLY (Deletes Parking Brake; Pads Not Included)	2000	2005	R			ST-22	322x22
83.435.4300.xx	S2000	2006	2006	F	ST-40	328x28		
83.435.4700.xx	S2000	2006	2006	F	ST-40	355x32		
87.435.002F.xx	S2000 - RACE ONLY (Deletes Parking Brake; Pads Not Included)	2006	2006	R			ST-22	322x22
HYUNDAI								
83.476.4300.xx	Tiburon	2003	2006	F	ST-40	328x28		
INFINITI								
83.486.4700.xx	FX35, FX45	2003	2006	F	ST-40	355x32		
83.646.4600.xx	G35	2002	2004	F	ST-40	332x32		
83.646.4700.xx	G35	2002	2004	F	ST-40	355x32		
83.646.4C00.xx	G35	2002	2004	F	ST-40	355x35		
83.646.6700.xx	G35	2002	2004	F	ST-60	355x32		
80.646.6702.x0	G35 - ST-60 Caliper Upgrade for 83.646.4700	2002	2004	F	ST-60	-		
83.646.0023.xx	G35	2002	2004	R			ST-22	328x28
83.646.0047.xx	G35	2002	2004	R			ST-45	355x35

Unless otherwise noted, Big Brake Kits do NOT fit stock wheels. Wheel fitment charts are available at www.stoptech.com.

Big Brake Kits

Part Number	Model	Years		Type	Front		Rear		
					Caliper	Rotor	Caliper	Rotor	
INFINITI (continued)									
83.646.4623.xx	G35	2002	2004	4W	ST-40	332x32	ST-22	328x28	
83.646.4723.xx	G35	2002	2004	4W	ST-40	355x32	ST-22	328x28	
83.646.4747.xx	G35	2002	2004	4W	ST-40	355x32	ST-45	355x32	
83.646.4C23.xx	G35	2002	2004	4W	ST-40	355x35	ST-22	328x28	
83.646.6723.xx	G35	2002	2004	4W	ST-60	355x32	ST-22	328x28	
83.646.6747.xx	G35	2002	2004	4W	ST-60	355x32	ST-45	355x32	
83.657.4600.xx	G35	2005	2006	F	ST-40	332x32			
83.657.4700.xx	G35	2005	2006	F	ST-40	355x32			
83.657.4C00.xx	G35	2005	2006	F	ST-40	355x35			
83.657.6700.xx	G35	2005	2006	F	ST-60	355x32			
80.657.6702.x0	G35 - ST-60 Caliper Upgrade for 83.657.4700	2005	2006	F	ST-60	-			
83.657.0023.xx	G35	2005	2006	R			ST-22	328x28	
83.657.0047.xx	G35	2005	2006	R			ST-45	355x35	
83.657.4623.xx	G35	2005	2006	4W	ST-40	332x32	ST-22	328x28	
83.657.4723.xx	G35	2005	2006	4W	ST-40	355x32	ST-22	328x28	
83.657.4747.xx	G35	2005	2006	4W	ST-40	355x32	ST-45	355x32	
83.657.4C23.xx	G35	2005	2006	4W	ST-40	355x35	ST-22	328x28	
83.657.6723.xx	G35	2005	2006	4W	ST-60	355x32	ST-22	328x28	
83.657.6747.xx	G35	2005	2006	4W	ST-60	355x32	ST-45	355x32	
83.649.4800.xx	QX56	2003	2006	F	ST-45	380x32			
JAGUAR									
83.530.4700.xx	S Type	2000	2002	F	ST-40	355x32			
83.530.0043.xx	S Type (Includes ST-10 Parking Brake Calipers)	2000	2002	R			ST-40/10	328x28	
83.530.4743.xx	S Type (Includes ST-10 Parking Brake Calipers)	2000	2002	4W	ST-40	355x32	ST-40/10	328x28	
LEXUS									
83.523.6700.xx	IS 350	2006	2006	F	ST-60	355x32			
83.523.004G.xx	IS 350	2006	2006	R			ST-40	345x28	
83.523.674G.xx	IS 350	2006	2006	4W	ST-60	355x32	ST-40	345x28	
83.516.4600.xx	GS Series (For Cars Lowered up to 1.0")	1993	2005	F	ST-40	332x32			
83.518.4600.xx	GS Series (For Cars Lowered up to 2.5")	1993	2005	F	ST-40	332x32			
83.518.4700.xx	GS Series (For Cars Lowered up to 2.5")	1993	2005	F	ST-40	355x32			
83.523.6700.xx	GS 430	2006	2006	F	ST-60	355x32			
83.523.004G.xx	GS 430	2006	2006	R			ST-40	345x28	
83.523.674G.xx	GS 430	2006	2006	4W	ST-60	355x32	ST-40	345x28	
83.519.4700.xx	LS 430	2001	2006	F	ST-40	355x32			
83.519.0047.xx	LS 430	2001	2006	R			ST-40	355x32	
83.519.4747.xx	LS 430	2001	2006	4W	ST-40	355x32	ST-40	355x32	
83.858.4700.xx	LX 470 - Fits Stock Wheels	1998	2002	F	ST-40	355x32			
83.865.4600.xx	RX 330	2004	2006	F	ST-40	332x32			
83.865.4600.xx	RX 350	2007	2007	F	ST-40	332x32			
83.865.4600.xx	RX 400h	2006	2006	F	ST-40	332x32			
83.857.4600.xx	SC 300	1992	2000	F	ST-40	332x32			
83.857.4700.xx	SC 300	1992	2000	F	ST-40	355x32			
83.522.0047.xx	SC 300	1992	2000	R			ST-40	355x32	
83.522.4747.xx	SC 300	1992	2000	4W	ST-40	355x32	ST-40	355x32	
83.857.4600.xx	SC 400	1992	2000	F	ST-40	332x32			
83.857.4700.xx	SC 400	1992	2000	F	ST-40	355x32			
83.522.0047.xx	SC 400	1992	2000	R			ST-40	355x32	
83.522.4747.xx	SC 400	1992	2000	4W	ST-40	355x32	ST-40	355x32	
83.521.4600.xx	SC 430	2002	2006	F	ST-40	332x32			
83.521.4700.xx	SC 430	2002	2006	F	ST-40	355x32			
83.521.4747.xx	SC 430	2002	2006	4W	ST-40	355x32	ST-40	355x32	
LINCOLN									
83.321.4700.xx	Blackwood 2WD w/ 14mm Studs DISCONTINUED	2002	2002	F	ST-40	355x32			
83.530.4700.xx	LS	2000	2006	F	ST-40	355x32			

Big Brake Kits									
Part Number	Model	Years		Type	Front		Rear		
					Caliper	Rotor	Caliper	Rotor	
LINCOLN (continued)									
83.530.0043.xx	LS (Includes ST-10 Parking Brake Calipers)	2000	2006	R			ST-40/10	328x28	
83.530.4743.xx	LS (Includes ST-10 Parking Brake Calipers)	2000	2006	4W	ST-40	355x32	ST-40/10	328x28	
83.322.4700.xx	Navigator 2WD w/ 12mm Studs DISCONTINUED	1997	1998	F	ST-40	355x32			
83.321.4700.xx	Navigator 2WD w/ 14mm Studs DISCONTINUED	1998	2002	F	ST-40	355x32			
83.320.4700.xx	Navigator 4WD w/ 4 Wheel ABS	1997	3/18/02	F	ST-40	355x32			
83.549.4300.xx	Zephyr	2006	2006	F	ST-40	328x28			
87.549.4300.xx	Zephyr RACE ONLY (Pistons Sized for Dual Masters & Deleted Booster; Pads Not Included)	2006	2006	F	ST-40	328x28			
87.549.002E.xx	Zephyr RACE ONLY (Pistons Sized for Dual Masters & Deleted Booster; Deletes Parking Brake; Pads Not Included)	2006	2006	R			ST-22	282x25	
87.549.432E.xx	Zephyr RACE ONLY (Pistons Sized for Dual Masters & Deleted Booster; Deletes Parking Brake; Pads Not Included)	2006	2006	4W	ST-40	328x28	ST-22	282x25	
MAZDA									
83.549.4300.xx	Mazda6	2003	2006	F	ST-40	328x28			
87.549.4300.xx	Mazda6 - RACE ONLY (Pistons Sized for Dual Masters, Deleted Booster; Pads Not Included)	2003	2006	F	ST-40	328x28			
87.549.002E.xx	Mazda6 - RACE ONLY (Pistons Sized for Dual Masters & Deleted Booster; Deletes Parking Brake; Pads Not Included)	2003	2006	R			ST-22	282x25	
87.549.432E.xx	Mazda6 - RACE ONLY (Pistons Sized for Dual Masters & Deleted Booster; Deletes Parking Brake; Pads Not Included)	2003	2006	4W	ST-40	328x28	ST-22	282x25	
83.550.4300.xx	Mazdaspeed Protégé	2003	2003	F	ST-40	328x28			
83.547.4300.xx	Protégé, Protégé 5, MP3, MP5	2001	2003	F	ST-40	328x28			
83.546.4600.xx	RX-7	1993	1995	F	ST-40	332x32			
87.546.4600.xx	RX-7 - RACE ONLY (ONLY For Use w/ JDM Rear Brake System; Pads Not Included)	1993	1995	F	ST-40	332x32			
83.548.4300.xx	RX-8 (Fits Stock Wheels w/ 15mm Spacers & Longer Studs)	2004	2006	F	ST-40	328x28			
83.548.4700.xx	RX-8	2004	2006	F	ST-40	355x32			
87.548.0023.xx	RX-8 - RACE ONLY (Deletes Parking Brake; Pads Not Included)	2004	2006	R			ST-22	328x28	
MERCEDES									
83.561.4600.xx	C Class except AMG (W202)	1999	2000	F	ST-40	332x32			
83.561.4700.xx	C Class except AMG (W202)	1999	2000	F	ST-40	355x32			
83.565.4600.xx	C Class except AMG; except Sports Sedan (W203)	2001	2006	F	ST-40	332x32			
83.565.4700.xx	C Class except AMG; except Sports Sedan (W203)	2001	2006	F	ST-40	355x32			
83.560.4600.xx	C43 AMG (W202)	1999	2000	F	ST-40	332x32			
83.560.4700.xx	C43 AMG (W202)	1999	2000	F	ST-40	355x32			
83.560.0043.xx	C43 AMG (W202)	1999	2000	R			ST-40	328x28	
83.560.4643.xx	C43 AMG (W202)	1999	2000	4W	ST-40	332x32	ST-40	328x28	
83.560.4743.xx	C43 AMG (W202)	1999	2000	4W	ST-40	355x32	ST-40	328x28	
83.567.4600.xx	C32 AMG (W203)	2002	2004	F	ST-40	332x32			
83.567.4700.xx	C32 AMG (W203)	2002	2004	F	ST-40	355x32			
83.560.0043.xx	C32 AMG (W203)	2002	2004	R			ST-40	328x28	
83.567.4643.xx	C32 AMG (W203)	2002	2004	4W	ST-40	332x32	ST-40	328x28	
83.567.4743.xx	C32 AMG (W203)	2002	2004	4W	ST-40	355x32	ST-40	328x28	
83.567.4600.xx	C55 AMG (W203)	2005	2006	F	ST-40	332x32			
83.567.4700.xx	C55 AMG (W203)	2005	2006	F	ST-40	355x32			
83.560.0043.xx	C55 AMG (W203)	2005	2006	R			ST-40	328x28	
83.567.4643.xx	C55 AMG (W203)	2005	2006	4W	ST-40	332x32	ST-40	328x28	
83.567.4743.xx	C55 AMG (W203)	2005	2006	4W	ST-40	355x32	ST-40	328x28	
83.562.4700.xx	CL Class except AMG (W215)	2000	2006	F	ST-40	355x32			
83.562.0046.xx	CL Class except AMG (W215)	2000	2006	R			ST-40	332x32	
83.562.4746.xx	CL Class except AMG (W215)	2000	2006	4W	ST-40	355x32	ST-40	332x32	
83.561.4600.xx	CLK Class except AMG (W208)	1998	2002	F	ST-40	332x32			
83.561.4700.xx	CLK Class except AMG (W208)	1998	2002	F	ST-40	355x32			
83.565.4600.xx	CLK Class except AMG (W209)	2003	2006	F	ST-40	332x32			
83.565.4700.xx	CLK Class except AMG (W209)	2003	2006	F	ST-40	355x32			
83.560.4600.xx	CLK55 AMG (W208)	2001	2002	F	ST-40	332x32			
83.560.4700.xx	CLK55 AMG (W208)	2001	2002	F	ST-40	355x32			
83.560.0043.xx	CLK55 AMG (W208)	2001	2002	R			ST-40	328x28	

Big Brake Kits

Part Number	Model	Years		Type	Front		Rear		
					Caliper	Rotor	Caliper	Rotor	
MERCEDES (continued)									
83.560.4643.xx	CLK55 AMG (W208)	2001	2002	4W	ST-40	332x32	ST-40	328x28	
83.560.4743.xx	CLK55 AMG (W208)	2001	2002	4W	ST-40	355x32	ST-40	328x28	
83.567.4600.xx	CLK55 AMG (W209)	2003	2004	F	ST-40	332x32			
83.567.4700.xx	CLK55 AMG (W209)	2003	2004	F	ST-40	355x32			
83.560.0043.xx	CLK55 AMG (W209)	2003	2004	R			ST-40	328x28	
83.567.4643.xx	CLK55 AMG (W209)	2003	2004	4W	ST-40	332x32	ST-40	328x28	
83.567.4743.xx	CLK55 AMG (W209)	2003	2004	4W	ST-40	355x32	ST-40	328x28	
83.561.4600.xx	E Class except AMG (W124, W210)	1996	2002	F	ST-40	332x32			
83.561.4700.xx	E Class except AMG (W124, W210)	1996	2002	F	ST-40	355x32			
83.562.4700.xx	E Class except AMG; except 4MATIC (W211)	2003	2006	F	ST-40	355x32			
83.562.0046.xx	E Class except AMG; except 4MATIC (W211)	2003	2006	R			ST-40	332x32	
83.562.4746.xx	E Class except AMG; except 4MATIC (W211)	2003	2006	4W	ST-40	355x32	ST-40	332x32	
83.560.4600.xx	E430 4MATIC (W210)	2001	2002	F	ST-40	332x32			
83.560.4700.xx	E430 4MATIC (W210)	2001	2002	F	ST-40	355x32			
83.560.0043.xx	E430 4MATIC (W210)	2001	2002	R			ST-40	328x28	
83.560.4643.xx	E430 4MATIC (W210)	2001	2002	4W	ST-40	332x32	ST-40	328x28	
83.560.4743.xx	E430 4MATIC (W210)	2001	2002	4W	ST-40	355x32	ST-40	328x28	
83.564.4700.xx	E500 (W124)	1994	1994	F	ST-40	355x32			
83.560.4600.xx	E55 AMG (W210)	1999	2002	F	ST-40	332x32			
83.560.4700.xx	E55 AMG (W210)	1999	2002	F	ST-40	355x32			
83.560.0043.xx	E55 AMG (W210)	1999	2002	R			ST-40	328x28	
83.560.4643.xx	E55 AMG (W210)	1999	2002	4W	ST-40	332x32	ST-40	328x28	
83.560.4743.xx	E55 AMG (W210)	1999	2002	4W	ST-40	355x32	ST-40	328x28	
83.563.4700.xx	S Class including AMG; except 4MATIC (W220)	2000	2006	F	ST-40	355x32			
83.563.0046.xx	S Class including AMG; except 4MATIC (W220)	2000	2006	R			ST-40	332x32	
83.563.4746.xx	S Class including AMG; except 4MATIC (W220)	2000	2006	4W	ST-40	355x32	ST-40	332x32	
83.566.4700.xx	SL Class except AMG (R230)	2003	2006	F	ST-40	355x32			
83.566.0046.xx	SL Class except AMG (R230)	2003	2006	R			ST-40	332x32	
83.566.4746.xx	SL Class except AMG (R230)	2003	2006	4W	ST-40	355x32	ST-40	332x32	
83.561.4600.xx	SLK Class except AMG (R170)	1997	2004	F	ST-40	332x32			
83.561.4700.xx	SLK Class except AMG (R170)	1997	2004	F	ST-40	355x32			
MINI									
83.138.4300.xx	Cooper including S; Not including John Cooper Works Brake Package	2002	2006	F	ST-40	328x28			
MITSUBISHI									
83.623.4600.xx	3000GT VR4 (Fits All Stock 1994+ SL & VR4 Wheels)	Apr-90	1999	F	ST-40	332x32			
83.623.4700.xx	3000GT VR4	Apr-90	1999	F	ST-40	355x32			
83.617.4300.xx	Eclipse (Gen1) 2WD Non-Turbo, 2WD Turbo, 4WD Turbo	Apr-89	1994	F	ST-40	328x28			
83.618.4300.xx	Eclipse (Gen2) 2WD Non-Turbo, 2WD Turbo, 4WD Turbo	1994	1999	F	ST-40	328x28			
83.616.4300.xx	Eclipse (Gen3) RS, GS	2000	2001	F	ST-40	328x28			
83.615.4300.xx	Eclipse (Gen3) RS, GS	2002	2005	F	ST-40	328x28			
83.615.4300.xx	Eclipse (Gen3) GT	2001	2005	F	ST-40	328x28			
83.624.4600.xx	Eclipse (Gen4)	2006	2006	F	ST-40	332x32			
83.624.4700.xx	Eclipse (Gen4)	2006	2006	F	ST-40	355x32			
83.624.6700.xx	Eclipse (Gen4) - Call for Availability	2006	2006	F	ST-60	355x32			
83.624.0023.xx	Eclipse (Gen4)	2006	2006	R			ST-22	328x28	
83.624.4623.xx	Eclipse (Gen4)	2006	2006	4W	ST-40	332x32	ST-22	328x28	
83.624.4723.xx	Eclipse (Gen4)	2006	2006	4W	ST-40	355x32	ST-22	328x28	
83.624.6723.xx	Eclipse (Gen4) - Call for Availability	2006	2006	4W	ST-60	355x32	ST-22	328x28	
83.615.4300.xx	Galant V6	Jun-00	2003	F	ST-40	328x28			
83.622.4600.xx	Lancer EVOLUTION 7-9 (Fits Stock Wheels)	2003	2006	F	ST-40	332x32			
83.622.4700.xx	Lancer EVOLUTION 7-9	2003	2006	F	ST-40	355x32			
83.622.6700.xx	Lancer EVOLUTION 7-9	2003	2006	F	ST-60	355x32			
83.622.0023.xx	Lancer EVOLUTION 7-9	2003	2006	R			ST-22	328x28	
83.622.4623.xx	Lancer EVOLUTION 7-9	2003	2006	4W	ST-40	332x32	ST-22	328x28	
83.622.4723.xx	Lancer EVOLUTION 7-9	2003	2006	4W	ST-40	355x32	ST-22	328x28	

Big Brake Kits

Part Number	Model	Years	Type	Front		Rear		
				Caliper	Rotor	Caliper	Rotor	
MITSUBISHI (continued)								
83.622.6723.xx	Lancer EVOLUTION 7-9	2003	2006	4W	ST-60	355x32	ST-22	328x28
NISSAN								
83.649.4800.xx	Armada	2004	Feb-05	F	ST-45	380x32		
83.651.4700.xx	Murano	2003	2006	F	ST-40	355x32		
83.648.4300.xx	Sentra SE-R; Standard Front Calipers	2002	2006	F	ST-40	328x28		
83.656.4600.xx	Skyline GT-R (R32)	1989	1995	F	ST-40	332x32		
83.656.4700.xx	Skyline GT-R (R32)	1989	1995	F	ST-40	355x32		
83.656.0023.xx	Skyline GT-R (R32)	1989	1995	R			ST-22	328x28
83.656.4623.xx	Skyline GT-R (R32)	1989	1995	4W	ST-40	332x32	ST-22	328x28
83.656.4723.xx	Skyline GT-R (R32)	1989	1995	4W	ST-40	355x32	ST-22	328x28
83.652.4600.xx	Skyline GT-R (R33)	1995	1998	F	ST-40	332x32		
83.652.4700.xx	Skyline GT-R (R33)	1995	1998	F	ST-40	355x32		
83.652.4C00.xx	Skyline GT-R (R33)	1995	1998	F	ST-40	355x35		
83.645.0027.xx	Skyline GT-R (R33)	1995	1998	R			ST-22	355x32
83.652.4727.xx	Skyline GT-R (R33)	1995	1998	4W	ST-40	355x32	ST-22	355x32
83.652.4C27.xx	Skyline GT-R (R33)	1995	1998	4W	ST-40	355x35	ST-22	355x32
83.645.4600.xx	Skyline GT-R (R34)	1999	2002	F	ST-40	332x32		
83.645.4C00.xx	Skyline GT-R (R34)	1999	2002	F	ST-40	355x35		
83.645.6800.xx	Skyline GT-R (R34)	1999	2002	F	ST-60	380x32		
83.645.0027.xx	Skyline GT-R (R34)	1999	2002	R			ST-22	355x32
83.645.4C27.xx	Skyline GT-R (R34)	1999	2002	4W	ST-40	355x35	ST-22	355x32
83.645.6827.xx	Skyline GT-R (R34)	1999	2002	4W	ST-60	380x32	ST-22	355x32
83.649.4800.xx	Titan	2004	Feb-05	F	ST-45	380x32		
83.654.4600.xx	240SX or Silvia - 5 Bolt Wheel	1989	1998	F	ST-40	332x32		
83.650.4600.xx	240SX or Silvia - 4 Bolt Wheel	1989	1998	F	ST-40	332x32		
83.647.4600.xx	300ZX	1990	1996	F	ST-40	332x32		
83.647.4700.xx	300ZX	1989	1994	F	ST-40	355x32		
83.647.0023.xx	300ZX	1990	1996	R			ST-22	328x28
83.647.4623.xx	300ZX	1990	1996	4W	ST-40	332x32	ST-22	328x28
83.647.4723.xx	300ZX	1990	1996	4W	ST-40	355x32	ST-22	328x28
83.646.4600.xx	350Z except Track Model	2003	2005	F	ST-40	332x32		
83.646.4700.xx	350Z except Track Model	2003	2005	F	ST-40	355x32		
83.646.4C00.xx	350Z except Track Model	2003	2005	F	ST-40	355x35		
83.646.6700.xx	350Z except Track Model	2003	2005	F	ST-60	355x32		
80.646.6702.x0	350Z except Track Model - ST-60 Caliper Upgrade for 83.646.4700	2003	2005	F	ST-60	-		
83.646.0023.xx	350Z except Track Model	2003	2005	R			ST-22	328x28
83.646.0047.xx	350Z except Track Model	2003	2005	R			ST-45	355x32
83.646.4623.xx	350Z except Track Model	2003	2005	4W	ST-40	332x32	ST-22	328x28
83.646.4723.xx	350Z except Track Model	2003	2005	4W	ST-40	355x32	ST-22	328x28
83.646.4747.xx	350Z except Track Model	2003	2005	4W	ST-40	355x32	ST-45	355x32
83.646.4C23.xx	350Z except Track Model	2003	2005	4W	ST-40	355x35	ST-22	328x28
83.646.6723.xx	350Z except Track Model	2003	2005	4W	ST-60	355x32	ST-22	328x28
83.646.6747.xx	350Z except Track Model	2003	2005	4W	ST-60	355x32	ST-45	355x32
83.657.4600.xx	350Z except Track Model	2006	2006	F	ST-40	332x32		
83.657.4700.xx	350Z except Track Model	2006	2006	F	ST-40	355x32		
83.657.4C00.xx	350Z except Track Model	2006	2006	F	ST-40	355x35		
83.657.6700.xx	350Z except Track Model	2006	2006	F	ST-60	355x32		
80.657.6702.x0	350Z except Track Model - ST-60 Caliper Upgrade for 83.657.4700	2006	2006	F	ST-60	-		
83.657.0023.xx	350Z except Track Model	2006	2006	R			ST-22	328x28
83.657.0047.xx	350Z except Track Model	2006	2006	R			ST-45	355x32
83.657.4623.xx	350Z except Track Model	2006	2006	4W	ST-40	332x32	ST-22	328x28
83.657.4723.xx	350Z except Track Model	2006	2006	4W	ST-40	355x32	ST-22	328x28
83.657.4747.xx	350Z except Track Model	2006	2006	4W	ST-40	355x32	ST-45	355x32
83.657.4C23.xx	350Z except Track Model	2006	2006	4W	ST-40	355x35	ST-22	328x28
83.657.6723.xx	350Z except Track Model	2006	2006	4W	ST-60	355x32	ST-22	328x28

Big Brake Kits

Part Number	Model	Years		Type	Front		Rear		
					Caliper	Rotor	Caliper	Rotor	
NISSAN (continued)									
83.657.6747.xx	350Z except Track Model	2006	2006	4W	ST-60	355x32	ST-45	355x32	
83.646.4600.xx	350Z Track Model - Fits Stock Wheels	2003	2006	F	ST-40	332x32			
83.646.4700.xx	350Z Track Model - Fits Stock Wheels	2003	2006	F	ST-40	355x32			
83.646.4C00.xx	350Z Track Model	2003	2006	F	ST-40	355x35			
83.646.6700.xx	350Z Track Model - Fits Stock Wheels	2003	2006	F	ST-60	355x32			
80.646.6702.x0	350Z Track Model - ST-60 Caliper Upgrade for 83.646.4700; Fits Stock Wheels	2003	2006	F	ST-60	-			
83.646.0023.xx	350Z Track Model - Fits Stock Wheels	2003	2006	R			ST-22	328x28	
83.646.0047.xx	350Z Track Model - Fits Stock Wheels	2003	2006	R			ST-45	355x32	
83.646.4623.xx	350Z Track Model - Fits Stock Wheels	2003	2006	4W	ST-40	332x32	ST-22	328x28	
83.646.4723.xx	350Z Track Model - Fits Stock Wheels	2003	2006	4W	ST-40	355x32	ST-22	328x28	
83.646.4747.xx	350Z Track Model - Fits Stock Wheels	2003	2006	4W	ST-40	355x32	ST-45	355x32	
83.646.4C23.xx	350Z Track Model	2003	2006	4W	ST-40	355x35	ST-22	328x28	
83.646.6723.xx	350Z Track Model - Fits Stock Wheels	2003	2006	4W	ST-60	355x32	ST-22	328x28	
83.646.6747.xx	350Z Track Model - Fits Stock Wheels	2003	2006	4W	ST-60	355x32	ST-45	355x32	
PONTIAC									
83.183.4600.xx	Firebird including Trans-Am & WS-6	1998	2002	F	ST-40	332x32			
83.735.4600.xx	GTO	2004	2004	F	ST-40	332x32			
83.735.4700.xx	GTO	2004	2004	F	ST-40	355x32			
PORSCHE									
TBA	Boxster S w/ Iron Rotors, Cayman S w/ Iron Rotors - Call for Availability	2000	2006	F	ST-40	355x32			
TBA	Boxster S w/ Iron Rotors, Cayman S w/ Iron Rotors - Call for Availability	2000	2006	R			ST-40	332x32	
TBA	Boxster S w/ Iron Rotors, Cayman S w/ Iron Rotors - Call for Availability	2000	2006	4W	ST-40	355x32	ST-40	332x32	
83.780.4700.xx	911 Carrera S, Carrera 4S (Type 993)	1995	1998	F	ST-40	355x32			
83.780.0046.xx	911 Carrera S, Carrera 4S (Type 993)	1995	1998	R			ST-40	332x32	
83.780.4746.xx	911 Carrera S, Carrera 4S (Type 993)	1995	1998	4W	ST-40	355x32	ST-40	332x32	
83.788.4700.xx	911 Carrera except Carrera 4 & 4S (Type 996)	1998	2004	F	ST-40	355x32			
83.788.0046.xx	911 Carrera except Carrera 4 & 4S (Type 996)	1998	2004	R			ST-40	332x32	
83.788.4746.xx	911 Carrera except Carrera 4 & 4S (Type 996)	1998	2004	4W	ST-40	355x32	ST-40	332x32	
83.789.4700.xx	911 Carrera S w/ Iron Rotors (Type 997) - Fits Stock Wheels	2005	2005	F	ST-40	355x32			
83.789.6C00.xx	911 Carrera S w/ Iron Rotors (Type 997)	2005	2005	F	ST-60	355x35			
83.789.6800.xx	911 Carrera S w/ Iron Rotors (Type 997) - Fits Stock Wheels	2005	2005	F	ST-60	380x32			
83.781.0046.xx	911 Carrera S w/ Iron Rotors (Type 997) - Fits Stock Wheels	2005	2005	R			ST-40	332x32	
83.789.4746.xx	911 Carrera S (Type 997) - Fits Stock Wheels	2005	2005	4W	ST-40	355x32	ST-40	332x32	
83.789.6C46.xx	911 Carrera S (Type 997)	2005	2005	4W	ST-60	355x35	ST-40	332x32	
83.789.6846.xx	911 Carrera S (Type 997) - Fits Stock Wheels	2005	2005	4W	ST-60	380x32	ST-40	332x32	
83.781.4700.xx	911 Carrera 4 & 4S w/ Iron Rotors (Type 996)	2002	2005	F	ST-40	355x32			
83.781.6C00.xx	911 Carrera 4 & 4S w/ Iron Rotors (Type 996)	2002	2005	F	ST-60	355x35			
83.781.6800.xx	911 Carrera 4 & 4S w/ Iron Rotors (Type 996)	2002	2005	F	ST-60	380x32			
83.781.0046.xx	911 Carrera 4 & 4S w/ Iron Rotors (Type 996)	2002	2005	R			ST-40	332x32	
83.781.4746.xx	911 Carrera 4 & 4S (Type 996)	2002	2005	4W	ST-40	355x32	ST-40	332x32	
83.781.6C46.xx	911 Carrera 4 & 4S (Type 996)	2002	2005	4W	ST-60	355x35	ST-40	332x32	
83.781.6846.xx	911 Carrera 4 & 4S (Type 996)	2002	2005	4W	ST-60	380x32	ST-40	332x32	
83.780.4700.xx	911 Turbo (Type 964)	1991	1994	F	ST-40	355x32			
83.780.0046.xx	911 Turbo (Type 964)	1991	1994	R			ST-40	332x32	
83.780.4746.xx	911 Turbo (Type 964)	1991	1994	4W	ST-40	355x32	ST-40	332x32	
83.780.4700.xx	911 Turbo (Type 993) - Fits Stock Wheels	1995	1998	F	ST-40	355x32			
83.780.0046.xx	911 Turbo (Type 993) - Fits Stock Wheels	1995	1998	R			ST-40	332x32	
83.780.4746.xx	911 Turbo (Type 993) - Fits Stock Wheels	1996	1998	4W	ST-40	355x32	ST-40	332x32	
83.781.4700.xx	911 Turbo w/ Iron Rotors (Type 996) - Fits Stock Wheels	2001	2005	F	ST-40	355x32			
83.781.6C00.xx	911 Turbo w/ Iron Rotors (Type 996)	2001	2005	F	ST-60	355x35			
83.781.6800.xx	911 Turbo w/ Iron Rotors (Type 996)	2001	2005	F	ST-60	380x32			
83.781.0046.xx	911 Turbo w/ Iron Rotors (Type 996) - Fits Stock Wheels	2001	2005	R			ST-40	332x32	
83.781.4746.xx	911 Turbo (Type 996) - Fits Stock Wheels	2001	2005	4W	ST-40	355x32	ST-40	332x32	
83.781.6C46.xx	911 Turbo (Type 996)	2001	2005	4W	ST-60	355x35	ST-40	332x32	
83.781.6846.xx	911 Turbo (Type 996)	2001	2005	4W	ST-60	380x32	ST-40	332x32	

Big Brake Kits									
Part Number	Model	Years		Type	Front		Rear		
					Caliper	Rotor	Caliper	Rotor	
PORSCHE (continued)									
83.780.4700.xx	911 Turbo Look & "S" (Type 964)	1991	1994	F	ST-40	355x32			
83.780.0046.xx	911 Turbo Look & "S" (Type 964)	1991	1994	R			ST-40	332x32	
83.780.4746.xx	911 Turbo Look & "S" (Type 964)	1991	1994	4W	ST-40	355x32	ST-40	332x32	
SAAB									
83.836.4300.xx	9-2X	2005	2006	F	ST-40	328x28			
83.836.4600.xx	9-2X	2005	2006	F	ST-40	332x32			
83.836.4700.xx	9-2X	2005	2006	F	ST-40	355x32			
83.836.0023.xx	9-2X	2005	2006	R			ST-22	328x28	
83.836.4323.xx	9-2X	2005	2006	4W	ST-40	328x28	ST-22	328x28	
83.836.4623.xx	9-2X	2005	2006	4W	ST-40	332x32	ST-22	328x28	
83.836.4723.xx	9-2X	2005	2006	4W	ST-40	355x32	ST-22	328x28	
SEAT									
83.886.4300.xx	Leon (Mk1) including Cupra; 1.8T 20V	1999	2005	F	ST-40	328x28			
83.886.4300.xx	Toledo (Mk2) 2.3L	1999	2004	F	ST-40	328x28			
SKODA									
83.886.4300.xx	Octavia including RS & Combi; 1.8T 20V	1999	2004	F	ST-40	328x28			
SUBARU									
83.836.4300.xx	Forester 2.5X, XS, XT	2003	2006	F	ST-40	328x28			
83.836.4600.xx	Forester 2.5X, XS, XT	2003	2006	F	ST-40	332x32			
83.836.4700.xx	Forester 2.5X, XS, XT	2003	2006	F	ST-40	355x32			
83.836.0023.xx	Forester 2.5XS, XT	2003	2005	R			ST-22	328x28	
83.836.4323.xx	Forester 2.5XS, XT	2003	2005	4W	ST-40	328x28	ST-22	328x28	
83.836.4623.xx	Forester 2.5XS, XT	2003	2005	4W	ST-40	332x32	ST-22	328x28	
83.836.4723.xx	Forester 2.5XS, XT	2003	2005	4W	ST-40	355x32	ST-22	328x28	
83.837.4300.xx	Impreza 2.5RS	1998	2001	F	ST-40	328x28			
83.837.4600.xx	Impreza 2.5RS	1998	2001	F	ST-40	332x32			
83.837.4700.xx	Impreza 2.5RS	1998	2001	F	ST-40	355x32			
83.837.0023.xx	Impreza 2.5RS	1998	2001	R			ST-22	328x28	
83.837.4323.xx	Impreza 2.5RS	1998	2001	4W	ST-40	328x28	ST-22	328x28	
83.837.4623.xx	Impreza 2.5RS	1998	2001	4W	ST-40	332x32	ST-22	328x28	
83.837.4723.xx	Impreza 2.5RS	1998	2001	4W	ST-40	355x32	ST-22	328x28	
83.836.4300.xx	Impreza 2.5RS, 2.5i, 2.5TS	2002	2006	F	ST-40	328x28			
83.836.4600.xx	Impreza 2.5RS, 2.5i, 2.5TS	2002	2006	F	ST-40	332x32			
83.836.4700.xx	Impreza 2.5RS, 2.5i, 2.5TS	2002	2006	F	ST-40	355x32			
83.836.0023.xx	Impreza 2.5RS, 2.5i	2002	2006	R			ST-22	328x28	
83.836.4323.xx	Impreza 2.5RS, 2.5i	2002	2006	4W	ST-40	328x28	ST-22	328x28	
83.836.4623.xx	Impreza 2.5RS, 2.5i	2002	2006	4W	ST-40	332x32	ST-22	328x28	
83.836.4723.xx	Impreza 2.5RS, 2.5i	2002	2006	4W	ST-40	355x32	ST-22	328x28	
83.836.4300.xx	Impreza WRX	2002	2006	F	ST-40	328x28			
83.836.4600.xx	Impreza WRX	2002	2006	F	ST-40	332x32			
83.836.4700.xx	Impreza WRX	2002	2006	F	ST-40	355x32			
83.836.0023.xx	Impreza WRX; 266x10mm Rear Rotor; Sliding Rear Caliper	2002	2005	R			ST-22	328x28	
83.836.4323.xx	Impreza WRX; 266x10mm Rear Rotor; Sliding Rear Caliper	2002	2005	4W	ST-40	328x28	ST-22	328x28	
83.836.4623.xx	Impreza WRX; 266x10mm Rear Rotor; Sliding Rear Caliper	2002	2005	4W	ST-40	332x32	ST-22	328x28	
83.836.4723.xx	Impreza WRX; 266x10mm Rear Rotor; Sliding Rear Caliper	2002	2005	4W	ST-40	355x32	ST-22	328x28	
83.838.4600.xx	Impreza WRX STi v7-9 (Fits Stock Wheels; 5x100mm & 5x114.3mm Bolt Circle)	2004	2006	F	ST-40	332x32			
83.838.4700.xx	Impreza WRX STi v7-9 (5x100mm & 5x114.3mm Bolt Circle)	2004	2006	F	ST-40	355x32			
83.839.4600.xx	Legacy GT	2005	2006	F	ST-40	332x32			
83.839.0023.xx	Legacy GT	2005	2006	R			ST-22	328x28	
83.839.4623.xx	Legacy GT	2005	2006	4W	ST-40	332x32	ST-22	328x28	
83.836.4300.xx	Outback	2001	2004	F	ST-40	328x28			
83.836.4600.xx	Outback	2001	2004	F	ST-40	332x32			
83.836.4700.xx	Outback	2001	2004	F	ST-40	355x32			
83.836.4300.xx	Outback 2.5i, 2.5XT, 3.0R	2005	2006	F	ST-40	328x28			
83.836.4600.xx	Outback 2.5i, 2.5XT, 3.0R	2005	2006	F	ST-40	332x32			

Unless otherwise noted, Big Brake Kits do NOT fit stock wheels. Wheel fitment charts are available at www.stoptech.com.

Big Brake Kits

Part Number	Model	Years		Type	Front		Rear	
					Caliper	Rotor	Caliper	Rotor
SUBARU (continued)								
83.836.4700.xx	Outback 2.5i, 2.5XT, 3.0R	2005	2006	F	ST-40	355x32		
VAUXHALL								
83.735.4600.xx	Monaro VXR	2002	2005	F	ST-40	332x32		
83.735.4700.xx	Monaro VXR	2002	2005	F	ST-40	355x32		
VOLKSWAGEN								
83.886.4300.xx	Bora 1.8T (Mk4) including Variant - Non-U.S. Model	1998	2004	F	ST-40	328x28		
83.887.4300.xx	Corrado VR6	1992	1995	F	ST-40	328x28		
TBA	Eos - Call for Availability	2007	2007	F	ST-40	328x28		
83.887.4300.xx	GTI VR6 (Mk3)	1995	1995	F	ST-40	328x28		
83.886.4300.xx	Golf, GTI 1.8T, VR6 (Mk4)	1999	2005	F	ST-40	328x28		
83.893.4300.xx	GTI 2.0T (Mk5)	2006	2006	F	ST-40	328x28		
87.892.4300.xx	GTI 2.0T (Mk5) - RACE ONLY (Pistons Sized for Dual Masters & Deleted Booster; Pads Not Included)	2006	2006	F	ST-40	328x28		
87.892.002E.xx	GTI 2.0T (Mk5) - RACE ONLY (Pistons Sized for Dual Masters & Deleted Booster; Deletes Parking Brake; Pads Not Included)	2006	2006	R			ST-22	282x25
87.892.432E.xx	GTI 2.0T (Mk5) - RACE ONLY (Pistons Sized for Dual Masters & Deleted Booster; Deletes Parking Brake; Pads Not Included)	2006	2006	4W	ST-40	328x28	ST-22	282x25
83.887.4300.xx	Jetta VR6 (Mk3)	1994	1995	F	ST-40	328x28		
83.886.4300.xx	Jetta 1.8T, VR6 (Mk4)	1999	2005	F	ST-40	328x28		
83.892.4300.xx	Jetta 2.5L & TDI (Mk5)	2005	2006	F	ST-40	328x28		
83.893.4300.xx	Jetta 2.0T (Mk5)	2006	2006	F	ST-40	328x28		
87.892.4300.xx	Jetta - All (Mk5) - RACE ONLY (Pistons Sized for Dual Masters & Deleted Booster; Pads Not Included)	2005	2006	F	ST-40	328x28		
87.892.002E.xx	Jetta - All (Mk5) - RACE ONLY (Pistons Sized for Dual Masters & Deleted Booster; Deletes Parking Brake; Pads Not Included)	2005	2006	R			ST-22	282x25
87.892.432E.xx	Jetta - All (Mk5) - RACE ONLY (Pistons Sized for Dual Masters & Deleted Booster; Deletes Parking Brake; Pads Not Included)	2005	2006	4W	ST-40	328x28	ST-22	282x25
83.886.4300.xx	New Beetle 1.8T	1999	2005	F	ST-40	328x28		
83.886.4300.xx	New Beetle 2.5L	2006	2006	F	ST-40	328x28		
83.887.4300.xx	Passat GLX	1993	1995	F	ST-40	328x28		
83.889.4300.xx	Passat GLX	1996	1997	F	ST-40	328x28		
83.102.4600.xx	Passat FWD	1998	2005	F	ST-40	332x32		
83.130.4600.xx	Passat 4Motion except W8	2002	2005	F	ST-40	332x32		
83.130.4700.xx	Passat 4Motion except W8	2002	2005	F	ST-40	355x32		
83.130.6700.xx	Passat 4Motion except W8	2002	2005	F	ST-60	355x32		
83.890.4700.xx	R32 (Mk4)	2004	2004	F	ST-40	355x32		
VOLVO								
83.945.4600.xx	C70 w/ 15" Stock Wheels	1998	2002	F	ST-40	332x32		
83.946.4600.xx	C70 w/ 16" Stock Wheels	1998	2002	F	ST-40	332x32		
83.946.4600.xx	C70	2003	2004	F	ST-40	332x32		
83.945.4600.xx	S70 w/ 15" Stock Wheels	1998	2000	F	ST-40	332x32		
83.946.4600.xx	S70 w/ 16" Stock Wheels	1998	2000	F	ST-40	332x32		
83.945.4600.xx	V70 Wagon including XC; w/ 15" Stock Wheels Except "R"	1998	2000	F	ST-40	332x32		
83.946.4600.xx	V70 Wagon including XC; w/ 16" Stock Wheels Except "R"	1998	2000	F	ST-40	332x32		
83.946.4600.xx	V70R	1998	2000	F	ST-40	332x32		
83.945.4600.xx	850	1993	1997	F	ST-40	332x32		

How to Specify Caliper Color & Rotor Finish

Please use the chart on the right to specify caliper color and rotor finish by replacing the "xx" suffix at the end of the BBK part number with the corresponding two digit code.

EXAMPLE: 83.130.4600.xx becomes 83.130.4600.71 for red calipers and slotted rotors with no coating.

For Track Use: Black is best, red is acceptable. Other caliper colors experience significant color change and are not recommended for track use.

	Slotted / No Coating	Drilled / No Coating	Slotted / Zinc Coating	Drilled / Zinc Coating
Black Paint	51	52	53	54
Silver Paint	61	62	63	64
Red Paint	71	72	73	74
Yellow Paint	81	82	83	84
Blue Paint	21	22	23	24
Gold Paint	91	92	93	94

Stage 1 & 2 Brake Upgrade Kits

Part Number	Model	Stage	Years	
ACURA				
86.057.01220	Integra	1	1990	1993
86.057.01224 (.01225 Drilled)	Integra	2	1990	1993
86.057.02220	Integra except Type R	1	1994	2001
86.057.02224 (.02225 Drilled)	Integra except Type R	2	1994	2001
86.054.01220	Integra Type R	1	1997	2001
86.054.01224 (.01225 Drilled)	Integra Type R	2	1997	2001
86.055.01220	NSX	1	1991	2005
86.055.01224 (.01225 Drilled)	NSX	2	1991	1996
86.058.01220	RSX Type S	1	2002	2006
86.058.01224 (.01225 Drilled)	RSX Type S	2	2002	2006
86.432.02220	RSX except Type S	1	2002	2006
86.432.02224 (.02225 Drilled)	RSX except Type S	2	2002	2006
86.059.01220	TSX	1	2004	2006
86.059.01224 (.01225 Drilled)	TSX	2	2004	2006
AUDI				
86.102.01220	A4 Quattro (B5 Chassis)	1	1996	Jan-99
86.102.01224 (.01225 Drilled)	A4 Quattro (B5 Chassis)	2	1996	Jan-99
86.102.02220	A4 Quattro (B5 Chassis)	1	Feb-99	2001
86.102.02224 (.01225 Drilled)	A4 Quattro (B5 Chassis)	2	Feb-99	2001
86.106.01220	A4 Quattro 1.8T (B6 Chassis)	1	2002	2005
86.106.01224 (.01225 Drilled)	A4 Quattro 1.8T (B6 Chassis)	2	2002	2005
86.106.01220	A4 Quattro 1.8T S-Line (B5 Chassis; Europe Only)	1	1999	2002
86.106.03224 (.01225 Drilled)	A4 Quattro 1.8T S-Line (B5 Chassis; Europe Only)	2	1999	2002
86.106.01220	A4 Quattro 3.0L (B6 Chassis)	1	2002	2006
86.106.04224 (.03225 Drilled)	A4 Quattro 3.0L (B6 Chassis)	2	2002	2006
86.104.04210	A6 Quattro 2.7T (C5 Chassis; Axxis Deluxe Plus Pads)	1	2000	2001
86.104.04214 (.01215 Drilled)	A6 Quattro 2.7T (C5 Chassis; Axxis Deluxe Plus Pads)	2	2000	2001
86.104.04210	A6 Quattro 2.7T; 4 Pad Front Calipers (C5 Chassis; Axxis Deluxe Plus Pads)	1	2000	2001
86.104.04214 (.01215 Drilled)	A6 Quattro 2.7T; 4 Pad Front Calipers (C5 Chassis; Axxis Deluxe Plus Pads)	2	2000	2001
86.104.01220	A6 Quattro 2.7T (C5 Chassis)	1	2000	2001
86.104.01224 (.01225 Drilled)	A6 Quattro 2.7T (C5 Chassis)	2	2000	2001
86.105.01220	A6 Quattro 4.2L (C5 Chassis; Stage 2 Not Available)	1	2000	2004
86.108.01220	Allroad 2.7T; 4 Pad Front Caliper	1	2001	2004
86.108.01224 (.01225 Drilled)	Allroad 2.7T; 4 Pad Front Caliper	2	2001	2004
86.100.01220	TT Quattro 180HP (1.8T)	1	2000	2006
86.100.03224 (.03225 Drilled)	TT Quattro 180HP (1.8T)	2	2000	2006
86.100.01220	TT Quattro 225HP (1.8T)	1	2000	2006
86.100.01224 (.01225 Drilled)	TT Quattro 225HP (1.8T)	2	2000	2006
86.110.01220	TT Quattro 250HP (3.2L; Stage 2 Not Available)	1	2004	2006
86.100.01220	TT 2WD	1	1999	2006
86.100.02224 (.02225 Drilled)	TT 2WD	2	1999	2006
86.130.01220	S4 (B5 Chassis)	1	1999	2002
86.130.01224 (.01225 Drilled)	S4 (B5 Chassis)	2	1999	2002
86.105.01220	S6 (C5 Chassis)	1	2000	2004
86.105.02224 (.02225 Drilled)	S6 (C5 Chassis)	2	2000	2004
BMW				
86.140.01220	318Ti	1	1995	1998
86.140.01224 (.01225 Drilled)	318Ti	2	1995	1998
86.133.04220	323 (E36) Convertible	1	Dec-97	2000
86.133.04224 (.04225 Drilled)	323 (E36) Convertible	2	Dec-97	2000
86.142.01220	325, 328 (E36) Non-Convertible	1	1992	1999
86.142.01224 (.01225 Drilled)	325, 328 (E36) Non-Convertible	2	1992	1999
86.133.02220	323 (E46) except Touring	1	2000	2000
86.133.02224 (.02225 Drilled)	323 (E46) except Touring	2	2000	2000
86.134.01220	325 Sedan, 325 Touring, 328 2WD (E46)	1	1999	2005
86.134.01224 (.01225 Drilled)	325 Sedan, 325 Touring, 328 2WD (E46)	2	1999	2005

Stage 1 & 2 Brake Upgrade Kits

Part Number	Model	Stage	Years
BMW (continued)			
86.134.02210	325 Sedan, 325 Touring, 328 2WD (E46; Axxis Deluxe Plus Pads)	1	1999 2005
86.134.02214 (.02215 Drilled)	325 Sedan, 325 Touring, 328 2WD (E46; Axxis Deluxe Plus Pads)	2	1999 2005
86.133.03220	330 Series (E46) 2WD - Max Performance Kit	1	2000 2005
86.133.03224 (Drilled Not Avail)	330 Series (E46) 2WD - Max Performance Kit	2	2000 2005
86.133.08210	330 Series (E46) 2WD - Ultra-Low Dust Kit (Axxis Deluxe Plus Pads)	1	2000 2005
86.133.08216 (PLAIN Rotors)	330 Series (E46) 2WD - Ultra-Low Dust Kit (Axxis Deluxe Plus Pads; PLAIN Rotors)	2	2000 2005
86.132.01220	540 (E36) Series except Touring	1	Mar-00 2003
86.132.01224 (.01225 Drilled)	540 (E36) Series except Touring	2	Mar-00 2003
86.131.01220	M3 (E36)	1	1995 1999
86.131.01224 (.01225 Drilled)	M3 (E36)	2	1995 1999
86.137.01220	M3 (E46)	1	2001 2006
86.137.01224 (Drilled Not Avail)	M3 (E46) except ZCP Competition Package	2	2001 2006
86.137.01220	M3 (E46; Axxis Deluxe Plus Pads)	1	2001 2006
86.137.01224 (Drilled Not Avail)	M3 (E46) except ZCP Competition Package (Axxis Deluxe Plus Pads)	2	2001 2006
86.135.01220	M5 (E39) - Stage 2 Not Available	1	2000 2004
86.141.01220	M-Coupe, M-Roadster	1	1998 2002
86.141.01224 (Drilled Not Avail)	M-Coupe, M-Roadster	2	1998 2002
86.143.01220	X5 except 4.6is, 4.8is	1	2000 2006
86.143.01224 (.01225 Drilled)	X5 w/ Solid Rear Rotors	2	2000 2006
86.147.01220	Z3 6 Cylinder, except M	1	1996 2002
86.147.01224 (.01225 Drilled)	Z3 6 Cylinder, except M	2	1996 2000
86.147.01224 (.01225 Drilled)	Z3 2.5L	2	2001 2002
86.147.02224 (.02225 Drilled)	Z3 3.0L	2	2001 2002
86.133.05220	Z4 except 3.0Si, except MZ4	1	2003 2006
86.133.05224 (.05225 Drilled)	Z4 2.5L	2	2003 2005
86.133.06224 (.06225 Drilled)	Z4 3.0L except 3.0Si	2	2003 2006
CHEVROLET			
86.184.01260	Suburban 3/4 Ton	1	2000 2006
86.184.01264 (.01265 Drilled)	Suburban 3/4 Ton; 2 Wheel Steering; 4.63" Rear Hub Hole	2	2000 2006
DODGE			
86.263.02220	Viper Competition Coupe	1	2003 2006
86.263.02224 (Drilled Not Avail)	Viper Competition Coupe	2	2003 2006
86.263.01004 (Slotted)	Viper Competition Coupe (2-Piece AeroRotors, No Pads)	2	2003 2006
86.263.01005 (Drilled)	Viper Competition Coupe (2-Piece AeroRotors, No Pads)	2	2003 2006
86.263.02220	Viper SRT-10	1	2003 2006
86.263.02224 (Drilled Not Avail)	Viper SRT-10	2	2003 2006
86.263.01004 (Slotted)	Viper SRT-10 (2-Piece AeroRotors, No Pads)	2	2003 2006
86.263.01005 (Drilled)	Viper SRT-10 (2-Piece AeroRotors, No Pads)	2	2003 2006
GMC			
86.184.01260	Yukon XL 3/4 Ton (PosiQuiet Severe Duty Pads)	1	2000 2006
86.184.01264 (.01265 Drilled)	Yukon XL 3/4 Ton; 2 Wheel Steering; 4.63" Rear Hub Hole (PosiQuiet Severe Duty Pads)	2	2000 2006
HONDA			
86.054.02220	Civic Del Sol Si	1	1993 1997
86.054.02224 (.02225 Drilled)	Civic Del Sol Si	2	1993 1997
86.057.02220	Civic Si 1600 w/ ABS	1	1994 1995
86.057.02224 (.02225 Drilled)	Civic Si 1600 w/ ABS	2	1994 1995
86.427.01220	Civic Si	1	1999 2000
86.427.01224 (.01225 Drilled)	Civic Si	2	1999 2000
86.430.01220	Civic Si Hatchback	1	2002 2003
86.430.01224 (.01225 Drilled)	Civic Si Hatchback	2	2002 2003
86.432.02220	Civic Si Hatchback	1	2004 2005
86.432.02224 (.02225 Drilled)	Civic Si Hatchback	2	2004 2005
86.434.01220	Civic Si	1	2006 2006
86.434.01224 (.01225 Drilled)	Civic Si	2	2006 2006
86.427.01220	Civic Type R (NOT Sold in U.S.)	1	1997 2000
86.427.01224 (.01225 Drilled)	Civic Type R (NOT Sold in U.S.)	2	1997 2000

Stage 1 & 2 Brake Upgrade Kits

Part Number	Model	Stage	Years
HONDA (continued)			
86.431.01220	Prelude	1	1997 2001
86.431.01224 (.01225 Drilled)	Prelude	2	1997 2001
86.429.01220	S2000	1	2000 2005
86.429.01224 (.01225 Drilled)	S2000	2	2000 2005
86.435.01220	S2000	1	2006 2006
86.435.01224 (.01225 Drilled)	S2000	2	2006 2006
HUMMER			
86.395.01260	H2 (PosiQuiet Severe Duty Pads)	1	2003 2006
86.395.01264 (.01265 Drilled)	H2 (PosiQuiet Severe Duty Pads)	2	2003 2006
TBA	H3 (PosiQuiet Severe Duty Pads) - Call for Availability	1	2006 2006
TBA	H3 (PosiQuiet Severe Duty Pads) - Call for Availability	2	2006 2006
INFINITI			
86.486.01220	FX Series	1	2004 2006
86.486.01224 (.01225 Drilled)	FX Series	2	2004 2006
86.646.03220	G35 AWD	1	2004 2005
86.646.03224 (Drilled Not Avail)	G35 AWD	2	2004 2005
86.646.06220	G35 w/ 6 Speed Manual Transmission	1	2003 2004
86.646.06224 (Drilled Not Avail)	G35 w/ 6 Speed Manual Transmission	2	2003 2004
86.646.07224 (Slotted)	G35 w/ 6 Speed Manual Transmission (2 Piece AeroRotor DRK Front & Rear)	2	2003 2004
86.646.07225 (Drilled)	G35 w/ 6 Speed Manual Transmission (2 Piece AeroRotor DRK Front & Rear)	2	2003 2004
86.646.03220	G35 w/ Automatic Transmission	1	2003 2004
86.646.03224 (Drilled Not Avail)	G35 w/ Automatic Transmission	2	2003 2004
JAGUAR			
86.530.01220	S-Type except R	1	2000 2002
86.530.01224 (.01225 Drilled)	S-Type except R	2	2000 2002
LEXUS			
86.516.01220	GS Series	1	1998 2005
86.516.01224 (.01225 Drilled)	GS Series	2	1998 2005
86.515.01220	IS 300	1	2000 2005
86.515.01224 (.01225 Drilled)	IS 300	2	2000 2005
LINCOLN			
86.530.01220	LS w/ 3.0L V6 Engine	1	2000 2003
86.530.01224 (.01225 Drilled)	LS w/ 3.0L V6 Engine	2	2000 2003
MAZDA			
86.548.02220	RX-8; Sport Suspension	1	2004 2006
86.548.02224 (.01415 Drilled)	RX-8; Sport Suspension	2	2004 2006
MINI			
86.138.02220	Cooper including S (Rear Pads Do NOT include Electronic Pad Wear Sensors)	1	2002 2003
86.138.02224 (.02225 Drilled)	Cooper including S (Rear Pads Do NOT include Electronic Pad Wear Sensors)	2	2002 2003
86.144.02220	Cooper including S; Not Including John Cooper Works Package (Rear Pads Do NOT include Electronic Pad Wear Sensors)	1	2004 2006
86.144.02224 (.02225 Drilled)	Cooper including S; Not Including John Cooper Works Package (Rear Pads Do NOT include Electronic Pad Wear Sensors)	2	2004 2006
MERCEDES			
86.561.01220	E430 w/ 1 Pad Pin Rear Caliper	1	1998 2000
86.561.01224 (Drilled Not Avail)	E430 w/ 1 Pad Pin Rear Caliper	2	1998 2000
86.561.01220	E430 except 4-Matic AWD	1	2001 2002
86.561.01224 (Drilled Not Avail)	E430 except 4-Matic AWD	2	2001 2002
MITSUBISHI			
86.615.01220	Eclipse GT Gen3	1	2000 2005
86.615.01224 (.01225 Drilled)	Eclipse GT Gen3	2	2000 2005
86.624.01220	Eclipse GT Gen4	1	2006 2006
86.624.01224 (.01225 Drilled)	Eclipse GT Gen4	2	2006 2006
86.624.02220	Eclipse GS Gen4	1	2006 2006
86.624.02224 (.02225 Drilled)	Eclipse GS Gen4	2	2006 2006
86.617.01220	Eclipse 2WD Turbo Gen1	1	1989 1994

Stage 1 & 2 Brake Upgrade Kits

Part Number	Model	Stage	Years	
MITSUBISHI (continued)				
86.618.01220	Eclipse 2WD Turbo Gen2 (D32A, D38A)	1	1994	1999
86.618.01224 (.01225 Drilled)	Eclipse 2WD Turbo Gen2 (D32A, D38A)	2	1994	1999
86.617.01220	Eclipse 2WD Non-Turbo Gen1 (D21A, D22A)	1	Oct-90	1994
86.618.01220	Eclipse 2WD Non-Turbo Gen2 w/ Rear Disc	1	1994	1999
86.618.01224 (.01225 Drilled)	Eclipse 2WD Non-Turbo Gen2 w/ Rear Disc	2	1994	1999
86.621.01220	Eclipse 4WD Turbo Gen1	1	1989	May-92
86.619.01220	Eclipse 4WD Turbo Gen1 (D27A)	1	Jun-92	1994
86.618.02220	Eclipse 4WD Turbo Gen2 (D33A)	1	1994	Oct-94
86.618.02224 (.02225 Drilled)	Eclipse 4WD Turbo Gen2 (D33A)	2	1994	Oct-94
86.618.03220	Eclipse 4WD Turbo Gen2	1	Nov-94	1999
86.618.03224 (.03225 Drilled)	Eclipse 4WD Turbo Gen2	2	Nov-94	1999
86.622.04220	Lancer EVOLUTION 7-9	1	2003	2006
86.622.04224 (Drilled Not Avail)	Lancer EVOLUTION 7-9	2	2003	2006
NISSAN				
86.650.03220	200SX 4-Lug, RWD (S13; Europe Only)	1	1991	1994
86.650.03224 (.03225 Drilled)	200SX 4-Lug, RWD (S13; Europe Only)	2	1991	1994
86.654.03220	200SX 5-Lug, RWD (S14; Europe Only)	1	1995	1998
86.654.03224 (.03225 Drilled)	200SX 5-Lug, RWD (S14; Europe Only)	2	1995	1998
86.650.01220	240SX 4-Lug, Non-ABS	1	1989	Jun-96
86.650.01224 (.01225 Drilled)	240SX 4-Lug, Non-ABS	2	1989	Jun-96
86.650.02220	240SX 4-Lug, Non-ABS	1	Jul-96	1998
86.650.02224 (.02225 Drilled)	240SX 4-Lug, Non-ABS	2	Jul-96	1998
86.650.02220	240SX 4-Lug w/ ABS	1	1989	1993
86.650.02224 (.02225 Drilled)	240SX 4-Lug w/ ABS	2	1989	1993
86.650.01220	240SX 5-Lug	1	1994	Jun-96
86.654.01225	240SX 5-Lug (Slotted No Longer Available)	2	1994	Jun-96
86.650.02220	240SX 5-Lug	1	Jul-96	1998
86.654.02224 (.02225 Drilled)	240SX 5-Lug	2	Jul-96	1998
86.647.01220	300ZX	1	1990	1996
86.647.01224 (.01225 Drilled)	300ZX Turbo	2	1990	1996
86.647.01224 (.01225 Drilled)	300ZX Non-Turbo w/ 30mm Thick Front Rotor	2	Jul-90	1996
86.646.03220	350Z except Track Model	1	2003	2005
86.646.03224 (.03225 Drilled)	350Z except Track Model	2	2003	2005
86.646.06220	350Z Track Model	1	2003	2006
86.646.06224 (Drilled Not Avail)	350Z Track Model	2	2003	2006
86.646.07224 (Slotted)	350Z Track Model (2 Piece DRK Front & Rear)	2	2003	2006
86.646.07225 (Drilled)	350Z Track Model (2 Piece DRK Front & Rear)	2	2003	2006
86.648.02220	Sentra SE-R w/ Standard Front Calipers	1	2002	2006
86.648.02224 (.02225 Drilled)	Sentra SE-R w/ Standard Front Calipers	2	2002	2006
PORSCHE				
86.788.01220	Boxster except S	1	1997	2004
86.788.01224 (.01225 Drilled)	Boxster except S	2	1997	2004
SAAB				
86.836.09220	9-2X Aero	1	2005	2006
86.836.09224 (.09225 Drilled)	9-2X Aero	2	2005	2006
SCION				
86.855.02220	tC	1	2005	2006
86.855.02224 (.02225 Drilled)	tC	2	2005	2006
SKODA				
86.886.03220	Octavia RS	1	2001	2004
86.886.03224 (.03225 Drilled)	Octavia RS	2	2001	2004
SUBARU				
86.837.04220	Impreza 2.5i	1	2006	2006
86.837.04224 (.01225 Drilled)	Impreza 2.5i	2	2006	2006
86.837.01220	Impreza 2.5RS	1	1998	2001
86.837.01224 (.01225 Drilled)	Impreza 2.5RS	2	1998	2001

Stage 1 & 2 Brake Upgrade Kits

Part Number	Model	Stage	Years
SUBARU (continued)			
86.837.04220	Impreza 2.5RS, 2.5TS	1	Jan-03 2005
86.837.04224 (.01225 Drilled)	Impreza 2.5RS, 2.5TS	2	Jan-03 2005
86.836.01220	Impreza WRX (U.S. & Canada Only; D721 Front, D770 Rear Pads)	1	2002 Dec-02
86.836.01224 (.01225 Drilled)	Impreza WRX (U.S. & Canada Only; D721 Front, D770 Rear Pads)	2	2002 Dec-02
86.836.09220	Impreza WRX (U.S. & Canada Only; D929 Front, D1004 Rear Pads)	1	Jan-03 2005
86.836.09224 (.09225 Drilled)	Impreza WRX (U.S. & Canada Only; D929 Front, D1004 Rear Pads)	2	Jan-03 2005
86.836.10220	Impreza WRX	1	2006 2006
86.836.10224 (.10225 Drilled)	Impreza WRX	2	2006 2006
86.836.03220	Impreza WRX w/ Upgraded Subaru 4-Piston Front Calipers (U.S. & Canada ONLY)	1	2002 Dec-02
86.836.03224 (.03225 Drilled)	Impreza WRX w/ Upgraded Subaru 4-Piston Front Calipers (U.S. & Canada ONLY)	2	2002 Dec-02
86.836.03220	Impreza WRX (NOT Sold in U.S.; GD Chassis; Subaru 4-Piston Front Calipers; 1 Piston Rear Calipers)	1	2000 2001
86.836.03224 (.03225 Drilled)	Impreza WRX (NOT Sold in U.S.; GD Chassis; Subaru 4-Piston Front Calipers; 1 Piston Rear Calipers; 266x10mm Solid Rear Rotors)	2	2000 2001
86.836.10220	Impreza WRX (NOT Sold in U.S.; GD Chassis; Subaru 4-Piston Front Calipers; Subaru 2-Piston Opposed Rear Calipers)	1	2001 2005
86.836.09224 (.09225 Drilled)	Impreza WRX (NOT Sold in U.S.; GD Chassis; Subaru 4-Piston Front Calipers; Subaru 2-Piston Opposed Rear Calipers; 266x18mm Vented Rear Rotors)	2	2001 2005
86.836.10220	Impreza WRX (NOT Sold in U.S.; GD Chassis; Subaru 4-Piston Front Calipers; Subaru 2-Piston Opposed Rear Calipers)	1	2001 2005
86.836.10224 (.10225 Drilled)	Impreza WRX (NOT Sold in U.S.; GD Chassis; Subaru 4-Piston Front Calipers; Subaru 2-Piston Opposed Rear Calipers; 290x18mm Vented Rear Rotors)	2	2001 2005
86.838.05220	Impreza WRX STi	1	2003 2006
86.838.05224 (Drilled Not Avail)	Impreza WRX STi (5x100mm Bolt Pattern)	2	2003 2004
86.838.06224 (Drilled Not Avail)	Impreza WRX STi (5x114.3mm Bolt Pattern)	2	2005 2006
86.839.01220	Outback	1	2002 2004
86.839.01224 (.01225 Drilled)	Outback	2	2002 2004
TOYOTA			
86.865.01210	Camry; Made in USA; Rear Disc Brakes (Axxis Deluxe Plus Pads)	1	2003 2006
86.865.01214 (.01215 Drilled)	Camry; Made in USA; Rear Disc Brakes (Axxis Deluxe Plus Pads)	2	2003 2006
86.865.02210	Camry; Made in Japan; Rear Disc Brakes (Axxis Deluxe Plus Pads)	1	2003 2006
86.865.02214 (.02215 Drilled)	Camry; Made in Japan; Rear Disc Brakes (Axxis Deluxe Plus Pads)	2	2003 2006
86.855.01220	Celica GT-S	1	2001 2005
86.855.01224 (.01225 Drilled)	Celica GT-S	2	2001 2005
86.860.01220	MR2 Spyder	1	2000 2005
86.860.01224 (.01225 Drilled)	MR2 Spyder	2	2000 2005
VOLKSWAGEN			
86.886.02220	Beetle Non-Turbo	1	Jul-99 2006
86.886.02224 (.02225 Drilled)	Beetle Non-Turbo	2	Jul-99 2006
86.886.01220	Beetle Turbo w/ Solid Rear Rotors	1	Jul-99 2006
86.886.01224 (.01225 Drilled)	Beetle Turbo w/ Solid Rear Rotors	2	Jul-99 2006
86.887.02220	Corrado VR6	1	1992 1995
86.887.02224 (.02225 Drilled)	Corrado VR6	2	1992 1995
86.887.01220	Golf (Mk3); Rear Disc Brakes	1	1993 1998
86.887.01224 (.01225 Drilled)	Golf (Mk3); Rear Disc Brakes	2	1993 1998
86.886.02220	Golf (Mk4); except 1.8T, VR6	1	Jun-99 2005
86.886.02224 (.02225 Drilled)	Golf (Mk4); except 1.8T, VR6	2	Jun-99 2005
86.886.01220	Golf (Mk4) 1.8T, VR6; Solid Rear Rotors	1	May-99 2005
86.886.01224 (.01225 Drilled)	Golf (Mk4) 1.8T, VR6; Solid Rear Rotors	2	May-99 2005
86.886.03220	Golf (Mk4) GTI 337, 20th Anniversary	1	2002 2002
86.886.03224 (.03225 Drilled)	Golf (Mk4) GTI 337, 20th Anniversary	2	2002 2002
86.887.01220	Jetta (Mk3) 4 Cylinder; Rear Disc Brakes	1	1993 Sep-98
86.887.01224 (.01225 Drilled)	Jetta (Mk3) 4 Cylinder; Rear Disc Brakes	2	1993 Sep-98
86.885.01220	Jetta (Mk3) VR6	1	1994 1995
86.885.01224 (.01225 Drilled)	Jetta (Mk3) VR6	2	1994 1995
86.885.02220	Jetta (Mk4) VR6	1	1996 Aug-98

Stage 1 & 2 Brake Upgrade Kits

Part Number	Model	Stage	Years	
VOLKSWAGEN (continued)				
86.885.02224 (.02225 Drilled)	Jetta (Mk4) VR6	2	1996	Aug-98
86.886.01220	Jetta (Mk4) 1.8T, VR6; Solid Rear Rotors	1	Jun-99	2005
86.886.01224 (.01225 Drilled)	Jetta (Mk4) 1.8T, VR6; Solid Rear Rotors	2	Jun-99	2005
86.886.01220	Jetta (Mk4) GLI; VR6; Vented Rear Rotors	1	2004	2005
86.886.03224 (.03225 Drilled)	Jetta (Mk4) GLI; VR6; Vented Rear Rotors	2	2004	2005
86.886.02220	Jetta (Mk4; US Market) except 1.8T, VR6	1	Jul-99	2005
86.886.02224 (.02225 Drilled)	Jetta (Mk4; US Market) except 1.8T, VR6	2	Jul-99	2005
86.890.01220	R32 (Stage 2 Not Available)	1	2004	2004

2 Piece Floating AeroRotor® DRKs (Direct Replacement Kits Fit Stock Calipers)

StopTech AeroRotor DRKs - Includes one PAIR of fully floating, assembled AeroHats, AeroRotors, and mounting hardware. Measurements are in millimeters.

Anti-Corrosion Gold Zinc Plating - Optional on all AeroRotor friction rings. Required for customers who live in cold climates where road salt will commonly be encountered. Also useful for customers who prefer not to have visible surface rust on their rotors. Please contact us for zinc plated part numbers.

Part Number	Description	Years	F/R	Finish	Dia.	Width
-------------	-------------	-------	-----	--------	------	-------

ACURA

81.057.0111	Integra except Type R (Requires Use of Integra Type R Front OE Calipers)	1990-2001	FRONT	Slotted	282	25
81.054.9111	Integra Type R	1997-2001	FRONT	Slotted	282	25
81.057.0111	Legend Sedan except GS	1993-1995	FRONT	Slotted	282	25
81.055.9911	NSX	1991-1996	FRONT	Slotted	282	28
81.057.0111	TL 3.2L	1996-1998	FRONT	Slotted	282	25

CHEVROLET

81.180.9911	Corvette (C5) including Z06	1997-2004	FRONT	Slotted	325	32
81.180.9911	Corvette (C6) Base Model (NOT Including Z51 or Z06)	2005-2006	FRONT	Slotted	325	32
81.187.9911	Corvette (C6) Z06 - Call for Availability	2006-2006	FRONT	Slotted	355	32
81.187.9921	Corvette (C6) Z06 - Call for Availability	2006-2006	FRONT	Slotted	355	32
81.187.9912	Corvette (C6) Z06 - Call for Availability	2006-2006	REAR	Slotted	340	26
81.187.9922	Corvette (C6) Z06 - Call for Availability	2006-2006	REAR	Slotted	340	26

DODGE

81.263.9911	Viper SRT-10 & Competition Coupe	2003-2006	FRONT	Slotted	355	32
81.263.9921	Viper SRT-10 & Competition Coupe	2003-2006	FRONT	Drilled	355	32
81.263.9912	Viper SRT-10 & Competition Coupe	2003-2006	REAR	Slotted	355	32
81.263.9922	Viper SRT-10 & Competition Coupe	2003-2006	REAR	Drilled	355	32

FERRARI

81.306.9911	360 Modena	1999-2004	FRONT	Slotted	328	28
81.306.9921	360 Modena	1999-2004	FRONT	Drilled	328	28
81.306.9911	360 Modena	1999-2004	REAR	Slotted	328	28
81.306.9921	360 Modena	1999-2004	REAR	Drilled	328	28

HONDA

81.054.9911	Civic Type R (Not Sold in U.S.)	1996-2000	FRONT	Slotted	282	25
81.057.9911	Prelude (5th Gen)	1997-2001	FRONT	Slotted	282	25

INFINITI

81.646.9911	G35 Coupe w/ 6 Speed Manual Transmission	2003-2004	FRONT	Slotted	324	30
81.646.9921	G35 Coupe w/ 6 Speed Manual Transmission	2003-2004	FRONT	Drilled	324	30
81.646.9912	G35 Coupe w/ 6 Speed Manual Transmission	2003-2004	REAR	Slotted	322	22
81.646.9922	G35 Coupe w/ 6 Speed Manual Transmission	2003-2004	REAR	Drilled	322	22

MITSUBISHI

81.622.9911	Lancer EVOLUTION Version 6-9 w/ 4 Piston Front Calipers - Call for Availability	1996-2007	FRONT	Slotted	320	32
81.622.9921	Lancer EVOLUTION Version 6-9 w/ 4 Piston Front Calipers - Call for Availability	1996-2007	FRONT	Drilled	320	32

NISSAN

81.646.9911	350Z Track Model	2003-2006	FRONT	Slotted	324	30
81.646.9921	350Z Track Model	2003-2006	FRONT	Drilled	324	30
81.646.9912	350Z Track Model	2003-2006	REAR	Slotted	322	22
81.646.9922	350Z Track Model	2003-2006	REAR	Drilled	322	22
81.645.9911	Skyline w/ RB26DETT Engine - Call for Availability	1999-2002	FRONT	Slotted	324	30
81.645.9921	Skyline w/ RB26DETT Engine - Call for Availability	1999-2002	FRONT	Drilled	324	30

Street & Race Pads for StopTech Calipers

For pads to fit stock calipers, please visit www.stoptech.com

Part Number	Compound	Performance Category
-------------	----------	----------------------

Pads for StopTech ST-60 Calipers

909.12470	Hawk Blue 9012	Track Only/Race
911.12470	Hawk DTC-60	Track Only/Race
913.12470	Hawk DTC-70	Track Only/Race
914.12470	Hawk HT-10	Track Only/Race
902.12470	Ferodo DS2500	Street/Track
901.12470	Ferodo DS3000	Track Only/Race
903.12470	Ferodo DS3000 +03	Track Only/Race
936.12470	Pagid RS 14 (Black)	Track Only/Race

Part Number	Compound	Performance Category
Pads for StopTech ST-10 Parking Brake Calipers		
106.03770	For a Pair of Calipers (One Axle Set)	-

StopTech is a stocking distributor for a wide range of street and race compounds. For advice on the best pad for your application, please visit our web site (www.stoptech.com) or contact us by phone at +1-310-325-4799.

Big Brake Kit Replacement Parts

AeroRotor® Friction Rings for StopTech BBKs & DRKs - Includes mounting hardware. Mounting hat not included. Measurements are in millimeters.							
Anti-Corrosion Gold Zinc Plating - Optional on all AeroRotor friction rings. Required for customers who live in cold climates where road salt will commonly be encountered. Also useful for customers who prefer not to have visible surface rust on their rotors. Please contact us for zinc plated part numbers.							
Part Number	Description	Side	Finish	Dia.	Width	Discard	Air Gap
31.011.1101.99	AeroRotor Friction Ring + Hat Mounting Kit (Front)	Left	Slotted	282	25	23.0	11.5
31.011.1102.99	AeroRotor Friction Ring + Hat Mounting Kit (Front)	Right	Slotted	282	25	23.0	11.5
31.011.1101.98	AeroRotor Friction Ring + Hat Mounting Kit (Rear)	Left	Slotted	282	25	23.0	11.5
31.011.1102.98	AeroRotor Friction Ring + Hat Mounting Kit (Rear)	Right	Slotted	282	25	23.0	11.5
31.021.1101.99	AeroRotor Friction Ring + Hat Mounting Kit	Left	Slotted	282	28	26.0	11.5
31.021.1102.99	AeroRotor Friction Ring + Hat Mounting Kit	Right	Slotted	282	28	26.0	11.5
30.646.1021.99	AeroRotor Friction Ring + Hat Mounting Kit	Left	Plain	322	22	20.2	8.0
30.646.1022.99	AeroRotor Friction Ring + Hat Mounting Kit	Right	Plain	322	22	20.2	8.0
30.646.1121.99	AeroRotor Friction Ring + Hat Mounting Kit	Left	Slotted	322	22	20.2	8.0
30.646.1122.99	AeroRotor Friction Ring + Hat Mounting Kit	Right	Slotted	322	22	20.2	8.0
30.646.1221.99	AeroRotor Friction Ring + Hat Mounting Kit	Left	Drilled	322	22	20.2	8.0
30.646.1222.99	AeroRotor Friction Ring + Hat Mounting Kit	Right	Drilled	322	22	20.2	8.0
30.646.1011.99	AeroRotor Friction Ring + Hat Mounting Kit	Left	Plain	324	30	28.0	14.5
30.646.1012.99	AeroRotor Friction Ring + Hat Mounting Kit	Right	Plain	324	30	28.0	14.5
30.646.1111.99	AeroRotor Friction Ring + Hat Mounting Kit	Left	Slotted	324	30	28.0	14.5
30.646.1112.99	AeroRotor Friction Ring + Hat Mounting Kit	Right	Slotted	324	30	28.0	14.5
30.646.1211.99	AeroRotor Friction Ring + Hat Mounting Kit	Left	Drilled	324	30	28.0	14.5
30.646.1212.99	AeroRotor Friction Ring + Hat Mounting Kit	Right	Drilled	324	30	28.0	14.5
30.180.1011.99	AeroRotor Friction Ring + Hat Mounting Kit	Left	Plain	325	32	30.0	14.5
30.180.1012.99	AeroRotor Friction Ring + Hat Mounting Kit	Right	Plain	325	32	30.0	14.5
30.180.1111.99	AeroRotor Friction Ring + Hat Mounting Kit	Left	Slotted	325	32	30.0	14.5
30.180.1112.99	AeroRotor Friction Ring + Hat Mounting Kit	Right	Slotted	325	32	30.0	14.5
30.180.1211.99	AeroRotor Friction Ring + Hat Mounting Kit	Left	Drilled	325	32	30.0	14.5
30.180.1212.99	AeroRotor Friction Ring + Hat Mounting Kit	Right	Drilled	325	32	30.0	14.5
31.326.1001.99	AeroRotor Friction Ring + Hat Mounting Kit	Left	Plain	328	28	26.0	16.5
31.326.1002.99	AeroRotor Friction Ring + Hat Mounting Kit	Right	Plain	328	28	26.0	16.5
31.326.1101.99	AeroRotor Friction Ring + Hat Mounting Kit	Left	Slotted	328	28	26.0	16.5
31.326.1102.99	AeroRotor Friction Ring + Hat Mounting Kit	Right	Slotted	328	28	26.0	16.5
31.326.1201.99	AeroRotor Friction Ring + Hat Mounting Kit	Left	Drilled	328	28	26.0	16.5
31.326.1202.99	AeroRotor Friction Ring + Hat Mounting Kit	Right	Drilled	328	28	26.0	16.5
31.346.1001.99	AeroRotor Friction Ring + Hat Mounting Kit	Left	Plain	328	35	32.0	16.5
31.346.1002.99	AeroRotor Friction Ring + Hat Mounting Kit	Right	Plain	328	35	32.0	16.5
31.346.1101.99	AeroRotor Friction Ring + Hat Mounting Kit	Left	Slotted	328	35	32.0	16.5
31.346.1102.99	AeroRotor Friction Ring + Hat Mounting Kit	Right	Slotted	328	35	32.0	16.5
31.346.1201.99	AeroRotor Friction Ring + Hat Mounting Kit	Left	Drilled	328	35	32.0	16.5
31.346.1202.99	AeroRotor Friction Ring + Hat Mounting Kit	Right	Drilled	328	35	32.0	16.5
31.536.1001.99	AeroRotor Friction Ring + Hat Mounting Kit	Left	Plain	332	32	30.0	16.5
31.536.1002.99	AeroRotor Friction Ring + Hat Mounting Kit	Right	Plain	332	32	30.0	16.5
31.536.1101.99	AeroRotor Friction Ring + Hat Mounting Kit	Left	Slotted	332	32	30.0	16.5
31.536.1102.99	AeroRotor Friction Ring + Hat Mounting Kit	Right	Slotted	332	32	30.0	16.5
31.536.1201.99	AeroRotor Friction Ring + Hat Mounting Kit	Left	Drilled	332	32	30.0	16.5
31.536.1202.99	AeroRotor Friction Ring + Hat Mounting Kit	Right	Drilled	332	32	30.0	16.5
31.626.1001.99	AeroRotor Friction Ring + Hat Mounting Kit	Left	Plain	345	28	26.0	16.5
31.626.1002.99	AeroRotor Friction Ring + Hat Mounting Kit	Right	Plain	345	28	26.0	16.5
31.626.1101.99	AeroRotor Friction Ring + Hat Mounting Kit	Left	Slotted	345	28	26.0	16.5
31.626.1102.99	AeroRotor Friction Ring + Hat Mounting Kit	Right	Slotted	345	28	26.0	16.5
31.626.1201.99	AeroRotor Friction Ring + Hat Mounting Kit	Left	Drilled	345	28	26.0	16.5

Big Brake Kit Replacement Parts (continued)

AeroRotor® Friction Rings for StopTech BBKs & DRKs (continued) - Includes mounting hardware. Mounting hat not included. Measurements are in millimeters.

Anti-Corrosion Gold Zinc Plating - Optional on all AeroRotor friction rings. Required for customers who live in cold climates where road salt will commonly be encountered. Also useful for customers who prefer not to have visible surface rust on their rotors. Please contact us for zinc plated part numbers.

Part Number	Description	Side	Finish	Dia.	Width	Discard	Air Gap
31.626.1202.99	AeroRotor Friction Ring + Hat Mounting Kit	Right	Drilled	345	28	26.0	16.5
31.737.1001.99	AeroRotor Friction Ring + Hat Mounting Kit	Left	Plain	355	32	30.0	17.0
31.737.1002.99	AeroRotor Friction Ring + Hat Mounting Kit	Right	Plain	355	32	30.0	17.0
31.737.1101.99	AeroRotor Friction Ring + Hat Mounting Kit	Left	Slotted	355	32	30.0	17.0
31.737.1102.99	AeroRotor Friction Ring + Hat Mounting Kit	Right	Slotted	355	32	30.0	17.0
31.737.1201.99	AeroRotor Friction Ring + Hat Mounting Kit	Left	Drilled	355	32	30.0	17.0
31.737.1202.99	AeroRotor Friction Ring + Hat Mounting Kit	Right	Drilled	355	32	30.0	17.0
31.747.1001.99	AeroRotor Friction Ring + Hat Mounting Kit	Left	Plain	355	35	33.0	17.0
31.747.1002.99	AeroRotor Friction Ring + Hat Mounting Kit	Right	Plain	355	35	33.0	17.0
31.747.1101.99	AeroRotor Friction Ring + Hat Mounting Kit	Left	Slotted	355	35	33.0	17.0
31.747.1102.99	AeroRotor Friction Ring + Hat Mounting Kit	Right	Slotted	355	35	33.0	17.0
31.747.1201.99	AeroRotor Friction Ring + Hat Mounting Kit	Left	Drilled	355	35	33.0	17.0
31.747.1202.99	AeroRotor Friction Ring + Hat Mounting Kit	Right	Drilled	355	35	33.0	17.0
31.836.1001.99	AeroRotor Friction Ring + Hat Mounting Kit	Left	Plain	380	32	30.0	16.5
31.836.1002.99	AeroRotor Friction Ring + Hat Mounting Kit	Right	Plain	380	32	30.0	16.5
31.836.1101.99	AeroRotor Friction Ring + Hat Mounting Kit	Left	Slotted	380	32	30.0	16.5
31.836.1102.99	AeroRotor Friction Ring + Hat Mounting Kit	Right	Slotted	380	32	30.0	16.5
31.836.1201.99	AeroRotor Friction Ring + Hat Mounting Kit	Left	Drilled	380	32	30.0	16.5
31.836.1202.99	AeroRotor Friction Ring + Hat Mounting Kit	Right	Drilled	380	32	30.0	16.5
31.846.1001.99	AeroRotor Friction Ring + Hat Mounting Kit	Left	Plain	380	35	33.0	16.5
31.846.1002.99	AeroRotor Friction Ring + Hat Mounting Kit	Right	Plain	380	35	33.0	16.5
31.846.1101.99	AeroRotor Friction Ring + Hat Mounting Kit	Left	Slotted	380	35	33.0	16.5
31.846.1102.99	AeroRotor Friction Ring + Hat Mounting Kit	Right	Slotted	380	35	33.0	16.5
31.846.1201.99	AeroRotor Friction Ring + Hat Mounting Kit	Left	Drilled	380	35	33.0	16.5
31.846.1202.99	AeroRotor Friction Ring + Hat Mounting Kit	Right	Drilled	380	35	33.0	16.5

One Piece AeroRotors® for StopTech BBKs - Part numbers are for one AeroRotor. Measurements are in mm.

Part Number	Description	Side	Finish	Dia.	Width	Discard	Air Gap
30.137.1111	One Piece AeroRotor for StopTech E46 M3 355x32mm BBK Part Number 82.137.4700	Left	Slotted	355	32	30.0	17.0
30.137.1112	One Piece AeroRotor for StopTech E46 M3 355x32mm BBK Part Number 82.137.4700	Right	Slotted	355	32	30.0	17.0
30.137.1211	One Piece AeroRotor for StopTech E46 M3 355x32mm BBK Part Number 82.137.4700	Left	Drilled	355	32	30.0	17.0
30.137.1212	One Piece AeroRotor for StopTech E46 M3 355x32mm BBK Part Number 82.137.4700	Right	Drilled	355	32	30.0	17.0

Hat Mounting Kits - Mount hat to rotor. Must be replaced each time rotor is removed from hat. One kit per rotor. **NOTE:** Hat Mounting Kits are included with the purchase of AeroRotor® Replacement Friction Rings, and are therefore only required when an AeroHat and used AeroRotor are disassembled and reassembled.

Part Number	Application	Flange	Number of Pins
89.000.0002	282x25mm REAR AeroRotors	6mm	8
89.000.0004	322, 328, 345mm AeroRotors	6mm	10
89.000.0011	282x25mm FRONT, 282x28mm AeroRotors	8mm	8
89.000.0001	330, 332, 355, 380mm AeroRotors	8mm	10
89.000.0013	325x32mm AeroRotors (Sloped Head for Corvette DRK Part Number 81.180.99x1)	8mm	10

Caliper Mounting Brackets - Please contact StopTech for the correct part number and price for your BBK.

ST-Series Calipers - Please contact StopTech for the correct part number for your application.

Part Number	Description	FMSI Pad Shape
Please Call	ST-80 Eight-Piston Caliper (In Development - Call for Availability)	2 x D608
Please Call	ST-65 Six-Piston Caliper	D756
Please Call	ST-60 Six-Piston Caliper	D1247
Please Call	ST-45 Four-Piston Caliper	D609
Please Call	ST-40 Four-Piston Caliper	D372
Please Call	ST-22 Two-Piston Caliper	D961
Please Call	ST-10 One-Piston Parking Brake Caliper (Cable Operated)	D377

Caliper Rebuild Components

Caliper Rebuild Kits - Include components to rebuild ONE pair of piston bores. For ST-22 calipers, only one kit is required. For ST-40 and ST-45 calipers, two kits are required (one kit for each piston size). For ST-60 and ST-65 calipers, three kits are required (one kit for each piston size). StopTech can also supply rebuild kits for the stock calipers of virtually any vehicle sold in North America. Please contact us for part numbers, pricing, and availability.

Piston Size (mm)		Application	28	30	34	36	38	40	42	44
Kit Type	• Pressure Seals • Dust Boots	All ST-Series Calipers	143.99028	143.99030	143.99034	143.99036	143.99038	143.99040	143.99042	143.99044
	• Short Pistons • Pressure Seals • Dust Boots	• ST-22 • ST-60 • ST-65	143.99128	143.99130	143.99134	143.99136	143.99138	143.99140	143.99142	N/A
	• Long Pistons • Pressure Seals • Dust Boots	• ST-40 • ST-45	143.99228	143.99230	143.99234	143.99236	143.99238	143.99240	143.99242	143.99244

Individual Caliper Rebuild Components - Commonly replaced when calipers are sent in to be rebuilt. All part numbers are for ONE (1x) part.

Part Number	Description	Caliper(s)
42.300.0005	Abutment Block	60
40.020.0007	Abutment Bolt	22, 40, 45, 65
42.100.0053	Abutment Plate, Left	22
42.100.0054	Abutment Plate, Right	22
42.100.0013	Abutment Plate, Left	40
42.100.0014	Abutment Plate, Right	40
42.100.0067	Abutment Plate, Left	60
42.100.0068	Abutment Plate, Right	60
42.100.0015	Abutment Plate, Left	65
42.100.0016	Abutment Plate, Right	65
41.699.2331	Banjo Bolt	22, 40, 45, 60, 65
41.000.0003	Bleed Screw	22, 40, 45, 60, 65
41.300.0003	Bleed Screw Cap w/ Retainer	22, 40, 45, 60, 65
40.090.1009	Bridge Bolt (For 28mm Wide Caliper)	40
40.090.1010	Bridge Bolt (For 32mm Wide Caliper)	40, 45
40.090.1030	Bridge Bolt (For 35mm Wide Caliper)	40, 45
32.429.NN05	Bridge, Black (For 28mm Wide Caliper)	40, 45
32.429.NN07	Bridge, Red (For 28mm Wide Caliper)	40, 45
32.439.NN05	Bridge, Black (For 32mm Wide Caliper)	40, 45
32.439.NN07	Bridge, Red (For 32mm Wide Caliper)	40, 45
32.449.NN05	Bridge, Black (For 35mm Wide Caliper)	40, 45
32.449.NN07	Bridge, Red (For 35mm Wide Caliper)	40, 45
32.639.N105	Bridge, Black (For 32mm Wide Caliper)	60
32.639.N107	Bridge, Red (For 32mm Wide Caliper)	60
32.649.N105	Bridge, Black (For 35mm Wide Caliper)	60
32.649.N107	Bridge, Red (For 35mm Wide Caliper)	60
32.639.N005	Bridge, Black (For 32mm Wide Caliper)	65
32.639.N007	Bridge, Red (For 32mm Wide Caliper)	65
32.649.N005	Bridge, Black (For 35mm Wide Caliper)	65
32.649.N007	Bridge, Red (For 35mm Wide Caliper)	65
40.090.1011	Caliper Body Bolt (For 28mm Wide Caliper)	40
40.090.1012	Caliper Body Bolt (For 32mm Wide Caliper)	40, 45
40.090.1029	Caliper Body Bolt (For 35mm Wide Caliper)	40, 45
41.400.0010	Cross Over Tube (For 25mm Wide Caliper)	22
41.400.0008	Cross Over Tube (For 28mm Wide Caliper)	22
41.400.0009	Cross Over Tube (For 32mm Wide Caliper)	22
41.400.0004	Cross Over Tube (For 28mm Wide Caliper)	40, 45, 60, 65
41.400.0005	Cross Over Tube (For 32mm Wide Caliper)	40, 45, 60, 65
41.400.0006	Cross Over Tube (For 35mm Wide Caliper)	40, 45, 60, 65
750.99000	Dust Boot, 28mm	22, 40, 45, 60, 65
750.99001	Dust Boot, 30mm	22, 40, 45, 60, 65
750.99002	Dust Boot, 34mm	22, 40, 45, 60, 65
750.99003	Dust Boot, 36mm	22, 40, 45, 60, 65
750.99004	Dust Boot, 38mm	22, 40, 45, 60, 65
750.99005	Dust Boot, 40mm	22, 40, 45, 60, 65

Caliper Rebuild Components (continued)

Individual Caliper Rebuild Components (continued) - Commonly replaced when calipers are sent in to be rebuilt. All part numbers are for ONE (1x) part.

Part Number	Description	Caliper(s)
750.99006	Dust Boot, 42mm	22, 40, 45, 60, 65
750.99007	Dust Boot, 44mm	22, 40, 45, 60, 65
40.440.0001	Jet Nut	40, 45, 60, 65
40.960.0003.01	Pad Retaining Pin	22
42.200.0001	Pad Retaining Clip (For 28mm Wide Caliper)	40, 45
42.200.0002	Pad Retaining Clip (For 32mm Wide Caliper)	40, 45
42.200.0003	Pad Retaining Clip (For 35mm Wide Caliper)	40, 45
41.528.0001	Piston, 28mm, Long	40, 45
41.530.0001	Piston, 30mm, Long	40, 45
41.534.0001	Piston, 34mm, Long	40, 45
41.536.0001	Piston, 36mm, Long	40, 45
41.538.0001	Piston, 38mm, Long	40, 45
41.540.0001	Piston, 40mm, Long	40, 45
41.542.0001	Piston, 42mm, Long	40, 45
41.544.0001	Piston, 44mm, Long	40, 45
41.528.0003	Piston, 28mm, Short	22, 60, 65
41.530.0003	Piston, 30mm, Short	22, 60, 65
41.534.0003	Piston, 34mm, Short	22, 60, 65
41.536.0003	Piston, 36mm, Short	22, 60, 65
41.538.0003	Piston, 38mm, Short	22, 60, 65
41.540.0003	Piston, 40mm, Short	22, 60, 65
41.542.0003	Piston, 42mm, Short	22, 60, 65
753.99000	Pressure Seal, 28mm	22, 40, 45, 60, 65
753.99001	Pressure Seal, 30mm	22, 40, 45, 60, 65
753.99002	Pressure Seal, 34mm	22, 40, 45, 60, 65
753.99003	Pressure Seal, 36mm	22, 40, 45, 60, 65
753.99004	Pressure Seal, 38mm	22, 40, 45, 60, 65
753.99005	Pressure Seal, 40mm	22, 40, 45, 60, 65
753.99006	Pressure Seal, 42mm	22, 40, 45, 60, 65
753.99007	Pressure Seal, 44mm	22, 40, 45, 60, 65
41.300.0002	Rubber Plug, Female	22, 40, 45, 60, 65
40.160.0001	Time Sert (Bridge Bolt Insert)	40, 45, 60, 65
40.220.0002	Washer for Bridge Bolt	40, 45, 60, 65
41.604.4516	Washer, Copper Crush	22, 40, 45, 60, 65

Caliper Rebuild Service

Part numbers are for **ONE** caliper. New pressure seals and dust boots are included. Other components requiring replacement will be billed separately. Customer pays shipping both ways. Add \$60 per caliper for dirty calipers. StopTech does NOT repaint calipers. Please call for instructions prior to sending us your calipers.

Part Number	Description	Caliper(s)
ST22RR	Caliper Rebuild w/ New Pressure Seals & Dust Boots	ST-22
ST40RR	Caliper Rebuild w/ New Pressure Seals & Dust Boots	ST-40, ST-45
ST60RR	Caliper Rebuild w/ New Pressure Seals & Dust Boots	ST-60, ST-65

Brake Fluid

Part Number	Description	Qty	Volume
68.000.1201	Até Typ 200	1	1 L
68.000.1210	Case of Até Typ 200	10	1 L
68.000.1051	Motul DOT 5.1 (Non-Silicon Based)	1	500mL
68.000.1000	Motul RBF600	1	500mL
68.000.1012	Case of Motul RBF600	12	500mL

Brake Accessories

Part Number	Description	Qty
68.000.1301	Motul Brake Clean - 300mL Aerosol Can	1
68.000.0008	Pad Wear Sensor for ST-40 4-Piston Caliper (Order 1 Per Caliper)	1


Brake Accessories (continued)

Titanium Backing Plates - Used to insulate the caliper body from heat generated by the brake system, thereby extending the longevity of dust boots and pressure seals, and discouraging boiling of the fluid. Please visit our website to check availability of Titanium Backing Plates for your calipers.

Part Number	Description	Qty
68.180.0372	Titanium Backing Plates for StopTech ST-40 4-Piston Caliper	Set of 4
68.180.0592	Titanium Backing Plates for 1992-02 Dodge Viper Front, 2002-05 Jaguar XJR Rear, Brembo [®] GT2 & GT3 Caliper	Set of 4
68.180.0594	Titanium Backing Plates for Porsche "Big Red" 4-Piston Caliper	Set of 4
68.180.0738	Titanium Backing Plates for Porsche Boxster 4-Piston Caliper (Fits All Boxster Front & Rear Calipers except Boxster S Front)	Set of 4
68.180.0756	Titanium Backing Plates for StopTech ST-65 6-Piston Caliper	Set of 4
68.180.0810	Titanium Backing Plates for 4-Piston Caliper: Ferrari F40/F50 Front & Rear, 2003+ Dodge Viper Front & Rear, Brembo [®] GT1 & GT1-S	Set of 4
68.180.0817	Titanium Backing Plates for 1-Piston Front Caliper: 2000-06 Toyota Celica, 2005+ Scion tC	Set of 4
68.180.0960	Titanium Backing Plates for 4-Piston Front Caliper: Nissan 350Z Track Model, Nissan Sentra SE-R, Infiniti G35 w/ 6MT	Set of 4
68.180.1001	Titanium Backing Plates for 4-Piston Front Caliper: Acura TL, Cadillac CTS-V/STS-V, Ford GT, Mitsubishi EVO, Subaru STi, Volvo S60R/V70R	Set of 4
68.180.1082	Titanium Backing Plates for 1-Piston Rear Caliper: 2005+ Ford Mustang (S197)	Set of 4
68.180.1182	Titanium Backing Plates for 4-Piston Front Caliper: Nissan 300ZX, 2006+ Subaru Impreza WRX	Set of 4
68.180.1247	Titanium Backing Plates for StopTech ST-60 6-Piston Caliper	Set of 4

StopTech T-Shirts

Printed on Hanes Beefy-T shirts. Front has small, standard StopTech logo on left chest. Rear has large "Stop in Less Space" logo.

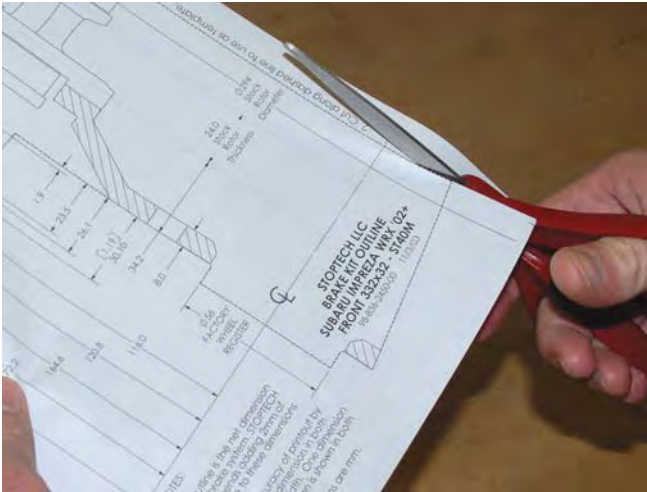
	Sleeve	Long		Short		
	Color	White	Gray	White	Gray	
Size	Small	68.900.1101	68.900.2101	68.900.1001	68.900.1101	
	Medium	68.900.1102	68.900.2102	68.900.1002	68.900.1102	
	Large	68.900.1103	68.900.2103	68.900.1003	68.900.1103	
	X-Large	68.900.1104	68.900.2104	68.900.1004	68.900.1104	
	XX-Large	68.900.1105	68.900.2105	68.900.1005	68.900.1105	

Marketing Materials

Part Number	Description
97.500.0011	Banner, StopTech Color Logo (3' x 5')
97.500.1001	Decal, Small Die Cut StopTech Logo White (8.5" x 1.75")
97.500.1002	Decal, Small Die Cut StopTech Logo Black (8.5" x 1.75")
97.500.1003	Decal, Small Die Cut StopTech Logo Red (8.5" x 1.75")
97.500.1011	Decal, Medium Die Cut StopTech Logo White (16.0" x 3.25")
97.500.1012	Decal, Medium Die Cut StopTech Logo Black (16.0" x 3.25")
97.500.1031	Decal, Large Die Cut StopTech Logo White (36.0" x 7.4")
97.500.1032	Decal, Large Die Cut StopTech Logo Black (36.0" x 7.4")
DISPLAY.CALIPER	Display, Red ST-40 Caliper Mounted on Half of a Two Piece AeroRotor; Includes 1 x 97.500.0011 StopTech Logo Banner
97.501.0001	Patch w/ Embroidered StopTech Logo (0.75" x 5.0")
ST0906	StopTech Catalog/Application Guide (b/w), 09/2006
STCB2006	StopTech Company Brochure (color), 08/2006
STPL0906	StopTech Price List, 09/2006
ST063FB	StopTech Tri-Fold Brochure, 09/2006

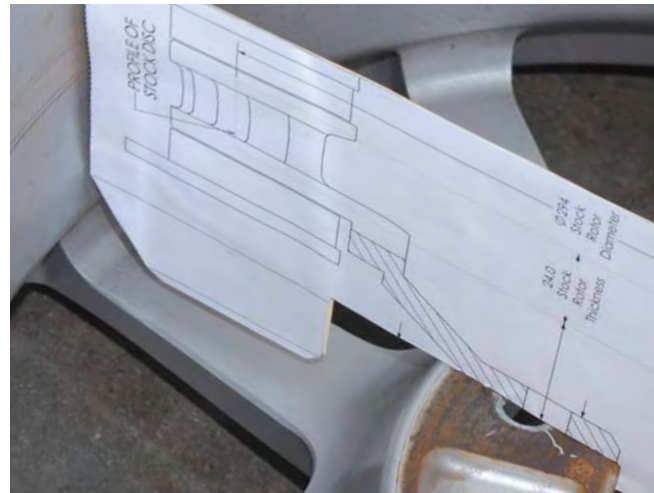
Wheel to Caliper Clearance

StopTech strives to provide maximum wheel clearance. Nevertheless, stock wheels will not fit most big brake kits. A 328 or 332mm rotor kit requires 17-in. wheels, a 355mm rotor kit requires 18-in. wheels and a 380mm rotor kit requires 19-in. wheels. Spoke clearance is equally critical in wheel selection. Final wheel fitment is the responsibility of the customer. StopTech is not responsible for wheel fitment. Refer to the Wheel Fitment section of our web site to download the wheel fitment template for your Big Brake Kit, and follow the instructions below.



1. Print a copy of the drawing and check dimensions both vertically and horizontally to confirm it has printed to scale. Cut the drawing just outside the dotted line.

2. Gluing the drawing to a stiffer piece of material such as a manila folder will make the template easier to use. Finish cutting directly along the dotted line.



3. Lay the template inside the wheel as shown.

4. Verify that edge of the caliper does not touch the rim, the spoke or any hardware such as a valve stem. A minimum of 2mm (0.080") is recommended.

Wheel Spacers

If there is interference, different wheels or a wheel spacer will be necessary. Wheel spacers can provide extra wheel spoke clearance. Longer lug studs or wheel bolts may be required if wheel spacers are used. Spacers will move the entire wheel outward, widening the track width of the vehicle as well as moving the outer edge of the tire closer to the fender. Basic suspension settings will generally not be adversely affected by a slight widening (up to 3mm per side) of the track. Fender-to-tire clearances must be checked, especially on lowered cars. The relationship between the wheel-centering register, the spacer and the wheel in its new position must also be checked. It is the customer's responsibility to ensure wheel spacers are properly specified and installed.

Note that due to commonality of hats, rotors and caliper specifications between applications, the wheel fit chart used for your vehicle may be labeled for a different vehicle, i.e., a Nissan 300ZX rear uses the same fit chart as a Nissan 350Z rear. This does not mean the kits are the same, only that the disc and caliper are positioned the same relative to the wheel mounting surface.

If you have any questions, please e-mail support@stoptech.com or call +1 310-325-4799 ext. 105.

Stainless Steel Brake Line Advisory

StopTech stainless steel brake lines are designed as direct replacement parts for stock brake lines. The replacement lines typically follow the same routing as the stock lines. While the design is tolerant of slight variations in the intended vehicle, any excessive lowering or raising of the vehicle may make the lines unsuitable for use on that particular car, truck or SUV. Also, the lines include provisions for routing attachments on the stock suspension such as brackets on the strut. If an aftermarket suspension is on the vehicle, the stock mounting points may not be on those components.

If alternate routing or modifications are required it is the sole responsibility of the installer to assure the lines are not binding or touching any part of the suspension or drive train. Inspect the line routing through the entire range of suspension travel, both up and down and left-to-right. If there is any doubt as to the safe installation of the brake lines, do not drive the vehicle until there is absolute assurance the lines are safely routed.

If you have any questions, please e-mail support@stoptech.com or call +1 310-325-4799 ext. 105.

Brake Vibration

The most common causes of brake vibration are improper bedding of the brake system, or improper pad selection for the specific driving environment. Rotor runout may also cause vibration, but precision manufacturing and inspection typically means that runout is not an issue. All hat/rotor assemblies are inspected for runout prior to shipment. Under the most extreme conditions, any rotor may distort, but uneven pad deposition is a more typical cause of vibration. A two-piece floating rotor and hat assembly is very resistant to any type of physical rotor deformation. If the system is not properly bedded-in, or street pads are run on an open track, uneven pad deposits will occur, causing an ever-worsening vibration. Failure to immediately address a pad deposition/vibration issue may lead to permanent damage to the rotors. Please read and understand the bed-in procedures included with each installation manual and posted on the StopTech website. If you have any questions, please contact the StopTech Technical Support Department for assistance. StopTech is not liable for vibrations caused by extreme usage or improper bed-in procedures.

Brake Noise

Certain brake pad compounds make more noise than others. Proper anti-squeal shim plates between the caliper pistons and pad backing plate help reduce the problem. Anti-squeal lubricants are also available to reduce some of the noise. Performance pads are more prone to brake squeal. The customer is responsible for any squeal-related problems due to pad selection.

Disclaimer of Warranty / Limitation of Liability

By purchasing the STOPTECH brake kit and/or components contained herein and opening the accompanying box or packaging, the purchaser(s), buyer(s) and/or the ultimate user(s) expressly (1) acknowledge that they have read and understood all terms set forth herein; (2) understand and agree that the STOPTECH brake kit and/or components, whether acquired new or used, whether complete or incomplete, whether of merchantable or non-merchantable quality, whether saleable or non-saleable, is taken, purchased, selected and/or acquired "AS IS" and "WITH ALL FAULTS"; (3) acknowledge that the brake kit and/or components contained herein are intended only for off-street use, regardless of whether said brake kit and/or components are approved by a state or the United States Department of Transportation; (4) understand and agree that they bear all risks, including but not limited to the risk as to the quality and performance of said brake kit and/or components, the risk of any and all liability arising from the use or misuse and/or correct or incorrect installation of said brake kit and/or components, and the risk of bearing the costs of repair or replacement of the subject brake kit and/or components, whether in defective or non-defective condition. STOPTECH is not responsible for damage, consequential or otherwise, for equipment failure or mal-performance after installation; understand that (5) Auto Racing is a dangerous sport, and products are subject to failure when exposed to the high stresses involved with use on a racetrack.

STOPTECH MAKES NO EXPRESS OR IMPLIED WARRANTIES, WHETHER ORAL OR WRITTEN, WHETHER TRUE OR UNTRUE AND REGARDLESS OF SOURCE, TO ANY PURCHASER(S), BUYER(S) AND/OR ULTIMATE USER(S) OF ITS BRAKE KITS AND COMPONENTS. ANY IMPLIED WARRANTY OF MERCHANTABILITY OR WARRANTY OF FITNESS FOR A PARTICULAR PURPOSE IS HEREBY EXPRESSLY AND EFFECTIVELY DISCLAIMED AND SUCH DISCLAIMER IS ALSO HEREBY ACKNOWLEDGED BY THE PURCHASER(S), BUYER(S) AND/OR ULTIMATE USER(S). RATHER, THE PURCHASER(S), BUYER(S) AND/OR ULTIMATE USER(S) EXPRESSLY AND IMPLIEDLY AFFIRM THAT HE/SHE/THEY ARE RELYING UPON THEIR OWN SKILL AND JUDGMENT IN SELECTING AND PURCHASING THE KIT AND/OR COMPONENTS CONTAINED HEREIN AS SUITABLE FOR THEIR INTENDED USE.

The purchaser(s), buyer(s) and/or the ultimate user(s) understand and agree that no officer, director, employee, agent, salesman, representative, distributor, or other affiliate of STOPTECH has any authority to make any statement or representation contrary to the terms set forth hereinabove. Any such statement or representation is hereby effectively disavowed.

Changes to Terms and Conditions

StopTech reserves the right to change these Terms and Conditions at any time without prior notice, and purchaser's continued purchase of parts constitutes acceptance of those changes.

Balanced Brake Upgrades, StopTech, AeroRotor, AeroHat, SportStop, ST-22, ST-40, ST-60 and ST-80 are trademarks of StopTech. All other company or brand names mentioned in this catalog are trademarks of their respective companies.