



STR RADIAL MOUNT CALIPER

Caliper Highlights:

Wilwood's **STR** radial mount caliper is the result of extensive testing and development focused on overcoming racing's most demanding high temp conditions. There are no brake tests tougher than stock cars racing on the legendary short tracks and road courses like Martinsville and Watkins Glen. The **STR** caliper is engineered to maximize braking under these extreme conditions.



The development of the **STR** caliper began with FEA structural design and stress analysis. The goal was to achieve a highly efficient clamping force with the lowest amount of deflection and fluid displacement resulting in a firm, consistent pedal feel for the driver. The caliper accommodates the widest, most thermally efficient rotor ever built. Extensive prototype testing and development has minimized structural deflection and volume displacement on this caliper and support components. The **STR** easily outperforms other short track systems in comparison testing with vastly superior heat management.

Weighing just 10.38 pounds, the **STR** features a six piston differential bore configuration that is easily matched with common pedal ratios and master cylinder bore sizes. The size, and location of each piston effectively varies the pressure load to compensate for natural temperature changes that occur over the length of the pad. This assures flat pad wear during extreme heat build-up on long green flag runs. Wilwood's exclusive **Thermlock® T2** pistons dramatically reduce heat transfer from the pads to the caliper body, piston seals, and fluid. This not only maintains safe and manageable caliper operating temperatures, it also keeps the heat in the pads where it can be properly removed by the rotor. A total of ten pre-loaded bridge bolts provide unmatched strength. The center bridge bar provides additional strength, and also accommodates quick and easy pad changes without caliper removal. Two-piece bleed assemblies enable hot bleeding without the risk of seat damage in the caliper body. All fluid tubes are vibration dampened to resist stress fractures and reduce the possibility of damage from track debris. Not only is this caliper stronger than mono-block designs, it is far easier and faster to service at the track.

The **STR** caliper uses PolyMatrix 9330 type brake pads in the compounds most suited to severe duty competition.

THERMLOCK T2 SHORT TRACK PISTON:

Wilwood's unique **Thermlock® T2** Short Track Piston is standard in our **STR** calipers, for complete details and a cross-section line drawing, please refer to page 109.

- 1.62" (41,9 mm) Diameter - Order P/N: 200-7398
- 1.25" (31,8 mm) Diameter - Order P/N: 200-7402

CALIPER ORDERING INFORMATION:⁽¹⁾

BORE SIZE	DISC WIDTH	FRONT MOUNT PART NO.		REAR MOUNT PART NO.	
		RH	LH	RH	LH
1.62 / 1.25 / 1.25" 41,1 / 31,8 / 31,8 mm	1.62" 41,1 mm	120-7482-FS	120-7483-FS	120-7482-RS	120-7483-RS

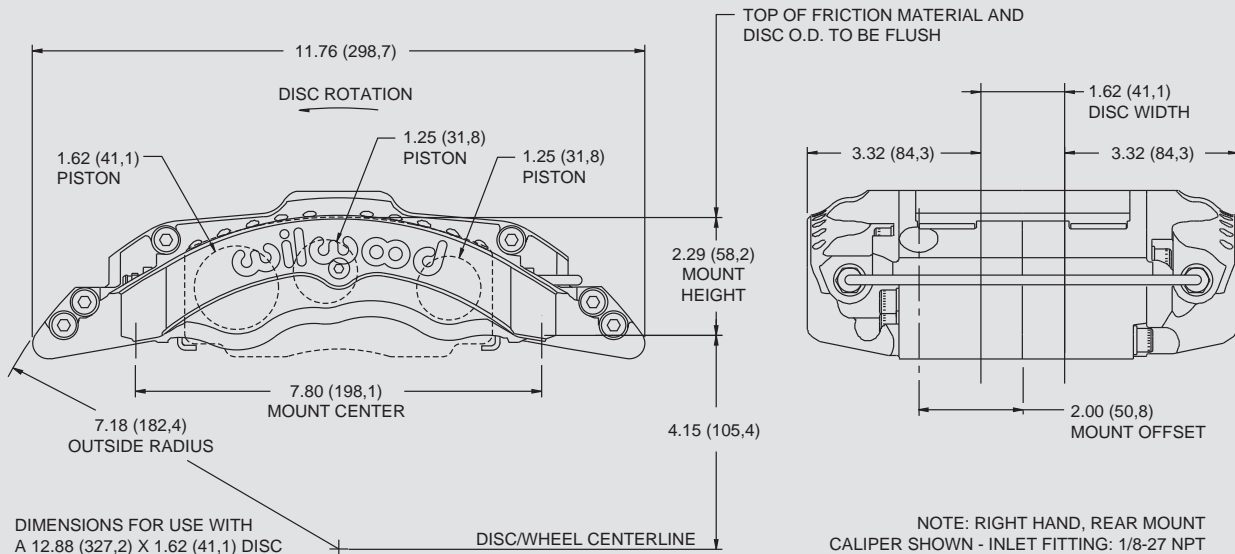
CALIPER MOUNTING BRACKET KIT 7.80" (198,1) RADIAL TO 5.25" (133,4) GT LUG - P/N: 250-7426

NOTES: (1) REFERENCE FRONT OF MANUAL FOR GENERAL ORDERING INFORMATION

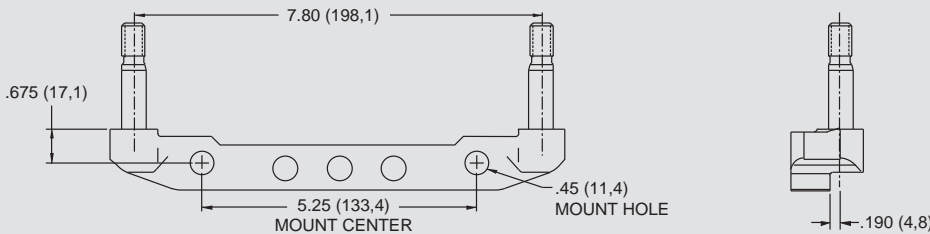
WARNING: The user or installer of any product from this catalog must determine its suitability for their intended purpose or application



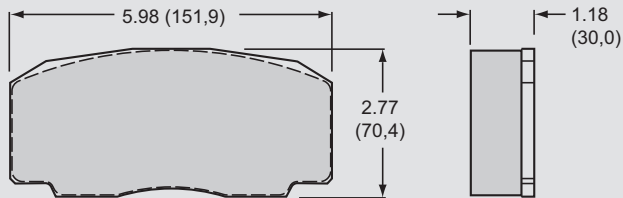
STR CALIPER, MOUNTING DIMENSIONS:



RADIAL CALIPER TO LUG MOUNT ADAPTER BRACKET, PART NUMBER 250-7426 - STEEL:



STR BRAKE PAD TYPE 9330 - PAD VOLUME = 13.2 CU. IN.:



<u>AXLE SET P/N</u>	<u>PAD TYPE / COMPOUND</u>
15A - 7509K	9330 A PolyMatrix
15H - 8119K	9330 H PolyMatrix

SERVICE PARTS ORDERING INFORMATION:

<u>CALIPER PART NO.</u>	<u>THERMLOCK PISTON</u>	<u>SQ RING KIT (6 PK)</u>	<u>BLEED SCREW KIT (4 PK)</u>	<u>CROSSOVER TUBE KIT (2 PK)</u>	<u>SELF-BLEED TUBE (EA)</u>	<u>BRIDGE BAR KIT</u>	<u>BRIDGE WEAR PLATE (EA)</u>	<u>MOUNT BOLT AND SHIM KIT</u>
120-7482	200-7402 (1.25") 200-7398 (1.62")	130-5660	220-6069	190-7547	190-7507	300-7546	300-7490	230-7031
120-7483	200-7402 (1.25") 200-7398 (1.62")	130-5660	220-6069	190-7547	190-7507	300-7546	300-7490	230-7031