



# P6R RADIAL MOUNT CALIPER

## Caliper Highlights:

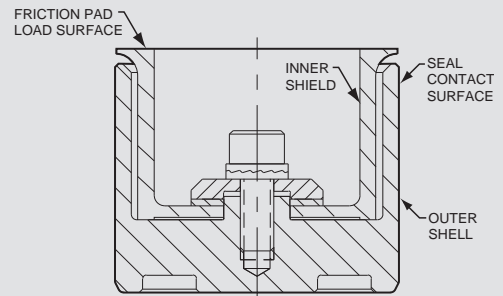
Wilwood's six piston **P6R** caliper leads the pack in Short Track and Road Course braking technology. **Thermlock® T2** insulated short track pistons come standard in the **P6R** and are positioned employing our proven exclusive stagger pattern resulting in unmatched caliper rigidity and balanced pad load characteristics. Holding a large 13.2 cubic inch pad, it is designed with heat management technology derived from years of short track experience combined with the latest in solid modeling and stress simulation programs. Brake pad distortion and taper is virtually eliminated. Pedal feel is responsive, predictable and consistent.



Weighing just 7.2 pounds, this ultra-stiff radial mount caliper comes with **Thermlock® T2** pistons and is fully heat shielded for maximum seal life and brake fluid protection. Additional features include dual bridge bolts, heavy duty pad load plates and protected two-piece bleed screws and crossover tube. We also offer a lightweight mounting bracket from 7.80" (198,1) radial to 5.25" (133,4) **GT** lug mount pattern. Self bleed lines are available for the **P6R**.

### THERMLOCK T2 SHORT TRACK PISTON:

Wilwood's **Thermlock® T2** pistons incorporate a stainless steel shield and coated aluminum shell configuration to provide a highly efficient thermal barrier between the brake pads and the caliper body, seals, and fluid. Lower operating temperatures eliminate seal crystallization and localized fluid boiling while providing longer caliper service life through decreased distortion in the caliper body and piston bores. **Thermlock® T2** pistons are standard equipment in all P6R calipers.



THERMLOCK T2 PISTON CROSS-SECTION

1.62" (41,1 mm) Diameter - Order P/N: 200-7398

1.25" (31,8 mm) Diameter - Order P/N: 200-7402

### CALIPER ORDERING INFORMATION:<sup>(1)</sup>

BORE SIZE	DISC WIDTH	FRONT MOUNT PART NO.		REAR MOUNT PART NO.	
		RH	LH	RH	LH
1.62 / 1.25 / 1.25" 41,1 / 31,8 / 31,8 mm	1.38" 35,1 mm	120-7604-FS	120-7605-FS	120-7604-RS	120-7605-RS

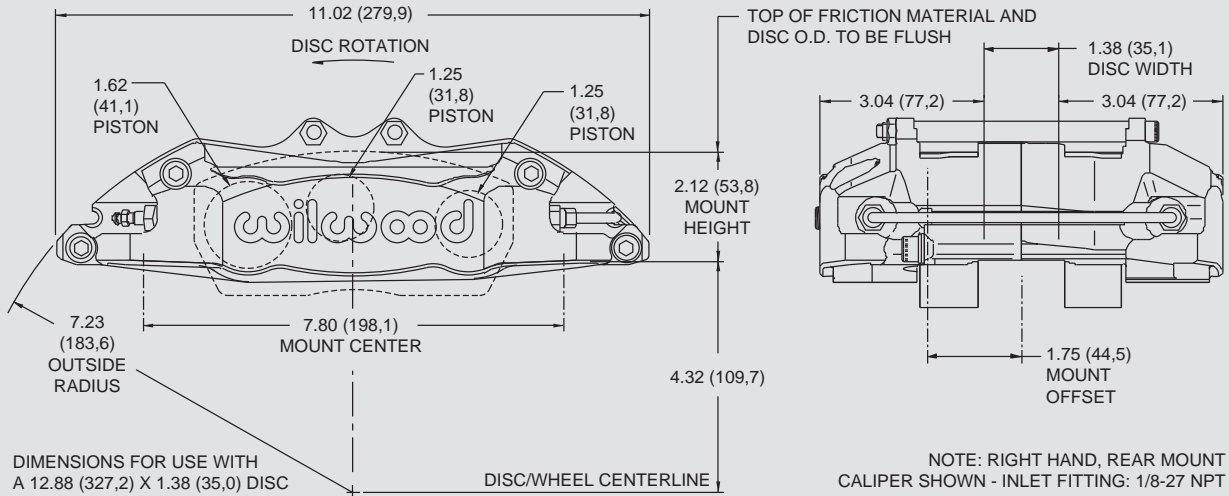
CALIPER MOUNTING BRACKET KIT 7.80" (198,1) RADIAL TO 5.25" (133,4) GT LUG - P/N: 250-7426

NOTES: (1) REFERENCE FRONT OF MANUAL FOR GENERAL ORDERING INFORMATION (FS = FRONT SIDE MOUNT, RS = REAR SIDE MOUNT)

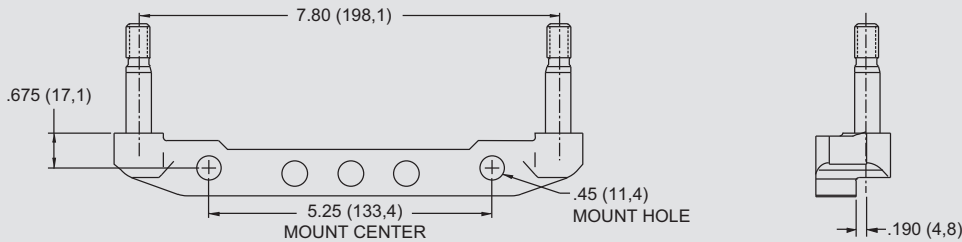
**WARNING:** The user or installer of any product from this catalog must determine its suitability for their intended purpose or application



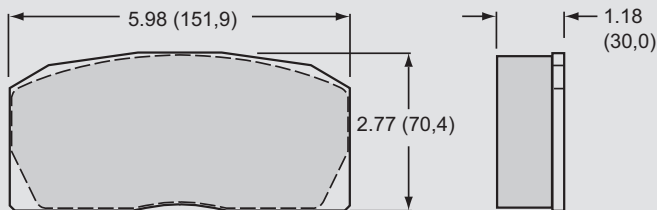
**P6R RADIAL MOUNT CALIPER, MOUNTING DIMENSIONS:**



**RADIAL CALIPER TO LUG MOUNT ADAPTER BRACKET, PART NUMBER 250-7426 - STEEL:**



**P6R BRAKE PAD TYPE 9930 - PAD VOLUME = 13.2 CU. IN.:**



AXLE SET P/N	PAD TYPE / COMPOUND
15A - 5742K	9930 A PolyMatrix
15H - 8107K	9930 H PolyMatrix

**SERVICE PARTS ORDERING INFORMATION:**

CALIPER PART NO.	THERMLOCK PISTON	SQ RING KIT (6 PK)	BLEED SCREW KIT (4 PK)	CROSSOVER TUBE KIT (2 PK)	SELF-BLEED TUBE (EA)	BRIDGE BOLT KIT	BRIDGE WEAR PLATE (EA)	MOUNT BOLT AND SHIM KIT
120-7604	200-7402 (1.25") 200-7398 (1.62")	130-5660	220-0627	190-5669	190-5604	230-6819	300-5712 (R/H) 300-5713 (L/H)	230-7031
120-7605	200-7402 (1.25") 200-7398 (1.62")	130-5660	220-0627	190-5669	190-5604	230-6819	300-5712 (R/H) 300-5713 (L/H)	230-7031

Brakes are critical safety components, see **warnings** and **disclaimer** on page 129