



FSL4 & FSL4/ST DIFFERENTIAL PISTON BORE CALIPER

Caliper Highlights:

The Superlite caliper series once again has a cutting-edge performer in the new differential piston bore version. Differential piston bores compensate for leading-edge mechanical loading and temperature variance across the pad face to reduce pad taper wear in sustained high temperature applications. **Thermlock®** pistons in the **FSL4/ST** and heavy wall stainless steel pistons in the **FSL4** models provide choices for two levels of protection against conductive heat transfer to the seals, fluid, and caliper body. Both the **FSL4** and **FSL4/ST** start at just 4.40 pounds.



Black

This caliper was designed for maximum structural efficiency utilizing computer generated solid modeling and FEA stress analysis design technology.

The stress flow forging process aligns the internal grain structure for improved strength and durability over simple block billet machined components. Full width bridges featuring a radial transition from the piston housings are combined with center bridge bolts for maximum resistance against body deflection and separation under load.

The extreme duty **FSL4/ST** caliper model features **Thermlock®** pistons for the highest degree of protection against conductive heat transfer from the pads to the fluid, seals, and body. Average caliper temperatures are reduced by 25% over stainless pistons. The standard duty **FSL4** model is equipped with the industry's heaviest wall stainless steel pistons. These pistons eliminate high-pressure deflection while providing full resistance to corrosion and slower heat transfer over common steel or aluminum pistons.

The superior strength of this innovative new caliper is combined with proven performance features from other Wilwood designs. Each caliper is equipped with Wilwood's replaceable SRS stainless steel bridge plates. SRS plates eliminate the bridge wear caused by pad gouging and extend the service life of the caliper body. The spring-loading action of the SRS plates also eliminates pad rattle and dampens the vibration harmonics that contribute to squeal under braking. Other standard Wilwood features include high-temperature, square faced piston seals which provide a full contact sealing surface and maintain their resilience through long service cycles for effective and controlled piston retraction. Fluid transfer tubes are dampened and recess mounted to eliminate fatigue from vibration while adding protection against damage from track or road born debris. Center bridge bolts provide positive pad retention with easy access for service without caliper removal. Two-piece bleed screw assemblies provide long, reliable service life and are easily replaced if necessary.

Forged Billet Superlite differential piston bore calipers are a direct replacement for all Wilwood Superlite and similar competitive brand calipers with 3.50" centered mounting tabs. Calipers are available in the popular 1.88/1.75" piston sizes for .81", and 1.25" rotor widths. **FSL4/ST** calipers use the same 7420 type bridge bolt brake pad used in all Superlite 6 piston calipers. The full range of PolyMatrix and Wilwood BP series pad compounds are available to match brake response and heat range to any application.

FSL4 WITH THERMLOCK® PISTONS CALIPER ORDERING INFORMATION:⁽¹⁾

BORE SIZE	DISC WIDTH	REAR MOUNT PART NO.	
		RH	LH
1.88 / 1.75" 47,8 / 44,5 mm	1.25" 31,8 mm	120-9579-RS	120-9580-RS
1.88 / 1.75" 47,8 / 44,5 mm	0.81" 20,6 mm	120-9577-RS	120-9578-RS

FSL4 WITH STAINLESS STEEL PISTONS CALIPER ORDERING INFORMATION:⁽¹⁾

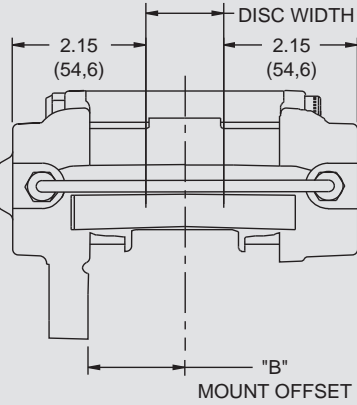
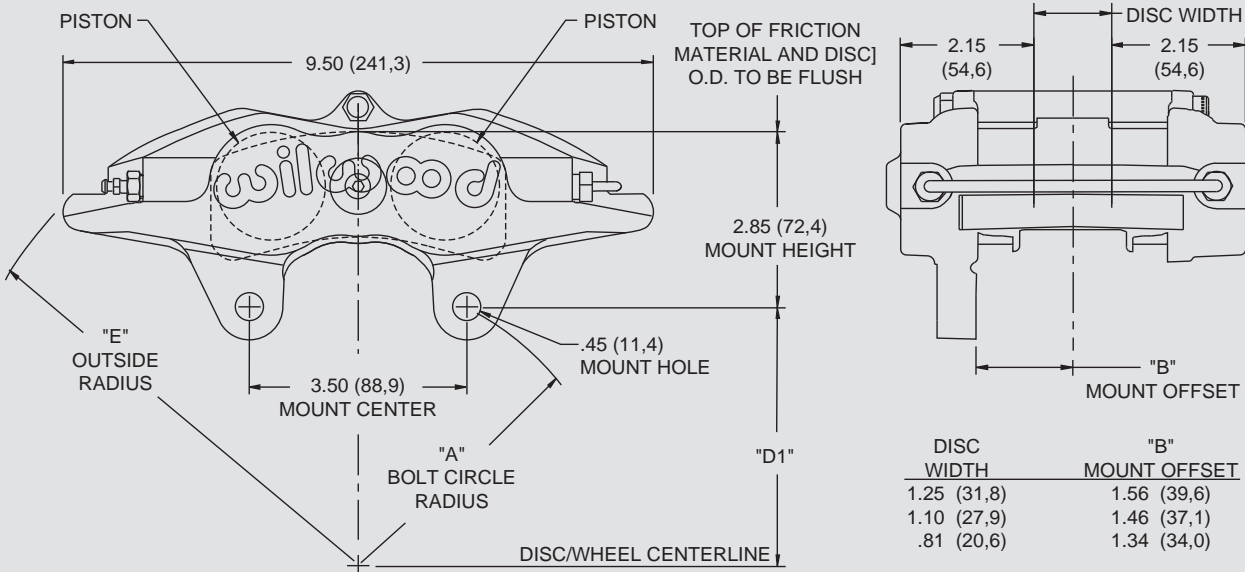
BORE SIZE	DISC WIDTH	REAR MOUNT PART NO.	
		RH	LH
1.88 / 1.75" 47,8 / 44,5 mm	1.25" 31,8 mm	120-9575-RS	120-9576-RS
1.88 / 1.75" 47,8 / 44,5 mm	0.81" 20,6 mm	120-9573-RS	120-9574-RS

NOTES: (1) REFERENCE FRONT OF MANUAL FOR GENERAL ORDERING INFORMATION

WARNING: The user or installer of any product from this catalog must determine its suitability for their intended purpose or application



FORGED BILLET SUPERLITE 4 CALIPER, MOUNTING DIMENSIONS:



DISC WIDTH	"B" MOUNT OFFSET
1.25 (31,8)	1.56 (39,6)
1.10 (27,9)	1.46 (37,1)
.81 (20,6)	1.34 (34,0)

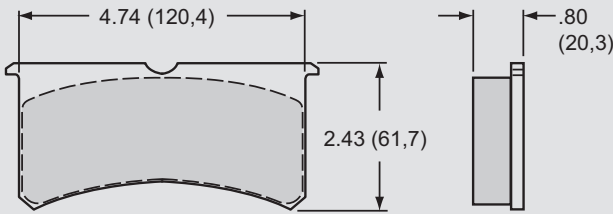
DIMENSION "D1" = (DISC DIAMETER/2) - 2.85 (72,4)

DISC DIAMETER	"A" BOLT CIRCLE RADIUS	"E" OUTSIDE RADIUS
11.75 (298,5)	3.50 (88,9)	6.69 (169,9)
12.19 (309,6)	3.69 (93,7)	6.85 (174,0)
12.72 (323,1)	3.92 (99,6)	7.05 (179,1)
12.88 (327,2)	4.00 (101,6)	7.12 (180,8)
13.00 (330,2)	4.05 (102,9)	7.18 (182,4)

NOTE: RIGHT HAND CALIPER SHOWN. LEFT HAND CALIPER HAS BLEED SCREW AND CROSSOVER TUBE REVERSED.

INLET FITTING: 1/8-27 NPT

FORGED BILLET SUPERLITE 4 BRAKE PAD TYPE 7420 - PAD VOLUME = 4.9 CU. IN.:



AXLE SET P/N	PAD TYPE / COMPOUND
15A - 5938K	7420 A PolyMatrix
15B - 5939K	7420 B PolyMatrix
15C - 6853K	7420 C PolyMatrix
15E - 6084K	7420 E PolyMatrix
15H - 8114K	7420 H PolyMatrix
15Q - 6829K	7420 Q PolyMatrix
150 - 8854K	7420 10 BP-10 Smart Pad
150 - 9416K	7420 20 BP-20 Smart Pad
150 - 9864K	7420 30 BP-30 Smart Pad
150 - 8323K	7420 SM For Titanium Rotor

SERVICE PARTS ORDERING INFORMATION:

CALIPER PART NO.	PISTON	SQ RING KIT (4 PK)	BLEED SCREW KIT (4 PK)	CROSSOVER TUBE KIT (4 PK)	SELF-BLEED TUBE (EA)	BRIDGE BOLT KIT	BRIDGE WEAR PLATE (EA)
120-9573	200-7521 (1.88") 200-7531 (1.75")	130-2427	220-6069	190-5973	—	230-7539	300-5922 (R/H) 300-5923 (L/H)
120-9574	200-7521 (1.88") 200-7531 (1.75")	130-2427	220-6069	190-5973	—	230-7539	300-5922 (R/H) 300-5923 (L/H)
120-9575	200-7521 (1.88") 200-7531 (1.75")	130-2427	220-6069	190-5975	190-8310	230-7541	300-5922 (R/H) 300-5923 (L/H)
120-9576	200-7521 (1.88") 200-7531 (1.75")	130-2427	220-6069	190-5975	190-8310	230-7541	300-5922 (R/H) 300-5923 (L/H)
120-9577	200-7550 (1.88") 200-7551 (1.75")	130-2427	220-6069	190-5973	—	230-7539	300-5922 (R/H) 300-5923 (L/H)
120-9578	200-7550 (1.88") 200-7551 (1.75")	130-2427	220-6069	190-5973	—	230-7539	300-5922 (R/H) 300-5923 (L/H)
120-9579	200-7550 (1.88") 200-7551 (1.75")	130-2427	220-6069	190-5975	190-8310	230-7541	300-5922 (R/H) 300-5923 (L/H)
120-9580	200-7550 (1.75") 200-7551 (1.75")	130-2427	220-6069	190-5975	190-8310	230-7541	300-5922 (R/H) 300-5923 (L/H)