

DYNALITE SINGLE FLOATER

Caliper Highlights:

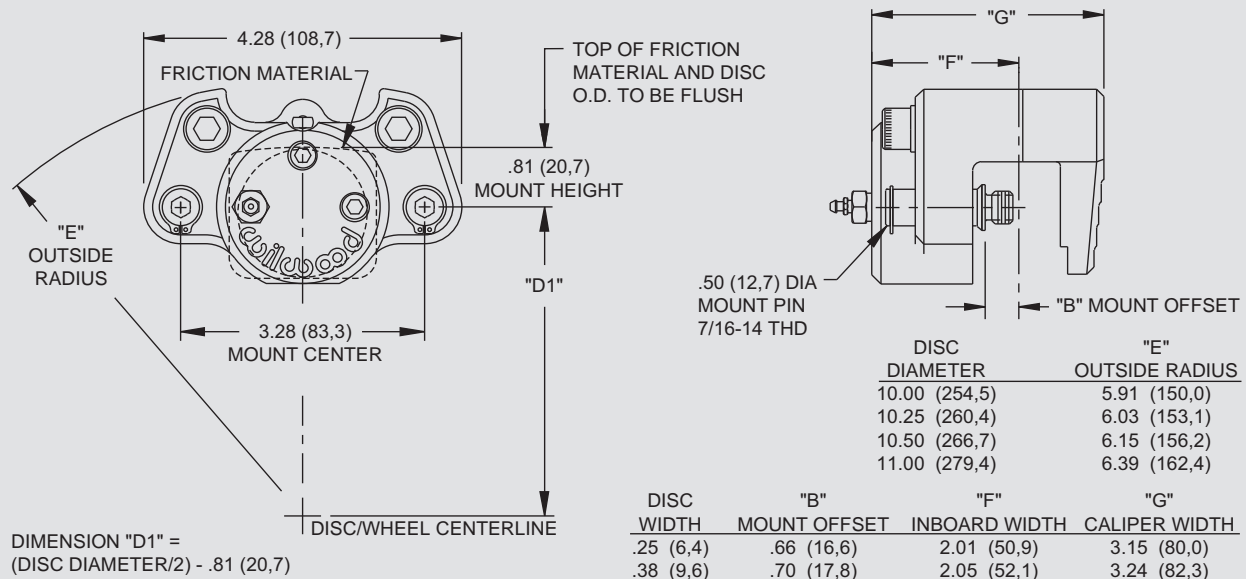
Wilwood's **Dynalite Single Floater** is a single piston billet caliper designed for Open Wheel, Drag Race, Karting and Motorcycle applications. The rigid outboard anvil half's low profile design allows it to fit in tight clearance situations where opposed piston designs will not. Weighing just 1.40 pounds, the caliper uses the same .49" thick, 1.1 cubic inch Dynalite Single quick change pads. Multiple 1/8-27 NPT inlet and bleed screw locations allow for versatile mounting positions. It comes with precision machined dry lubricated slide pins for bind-free operation. The **Dynalite Single Floater** is black anodized to resist corrosion and fits rotors from .25" to .38" wide and diameters from 6.00" to 13.00".



CALIPER ORDERING INFORMATION:⁽¹⁾

BORE SIZE		DISC WIDTH		PART NUMBER
1.75"	44,5 mm	.38"	9,6 mm	120-3277
1.75"	44,5 mm	.25"	6,4 mm	120-2498

DYNALITE SINGLE FLOATER, MOUNTING DIMENSIONS:⁽²⁾



SERVICE PARTS ORDERING INFORMATION:

CALIPER PART NO.	PISTON	SQ RING KIT (4 PK)	BLEED SCREW KIT (4 PK)	SLIDE PIN (EA)	SLIDE PIN SNAP-RING (EA)	COTTER PIN (10 PK)
120-2498	200-7532 (1.75")	130-2655	220-0627	230-2747	310-1218	180-0054
120-3277	200-7532 (1.75")	130-2655	220-0627	230-2747	310-1218	180-0054

NOTES: (1) REFERENCE FRONT OF MANUAL FOR GENERAL ORDERING INFORMATION
 (2) THE DYNALITE SINGLE FLOATER UTILIZES BRAKE PAD TYPE 7012.
 PLEASE REFER TO PAGE 60 FOR THE PHYSICAL CONFIGURATION OF THIS PAD

Brakes are critical safety components, see **warnings** and **disclaimer** on page 129